

Molecular basis for regulating seasonal reproduction in vertebrates

Taeko Nishiwaki-Ohkawa^{1,2} and Takashi Yoshimura^{1,2,3,4}

¹Laboratory of Animal Physiology, Graduate School of Bioagricultural Sciences, Nagoya University, Nagoya, Japan

²Institute of Transformative Bio-Molecules (WPI-ITbM), Nagoya University, Nagoya, Japan

³Division of Seasonal Biology, National Institute for Basic Biology, Okazaki, Japan

⁴Avian Bioscience Research Center, Graduate School of Bioagricultural Sciences, Nagoya University, Nagoya, Japan

Correspondence
should be addressed
to T Yoshimura

Email
takashiy@agr.nagoya-u.ac.jp

Abstract

Animals that inhabit mid- to high-latitude regions exhibit various adaptive behaviors, such as migration, reproduction, molting and hibernation in response to seasonal cues. These adaptive behaviors are tightly regulated by seasonal changes in photoperiod, the relative day length vs night length. Recently, the regulatory pathway of seasonal reproduction has been elucidated using quail. In birds, deep brain photoreceptors receive and transmit light information to the pars tuberalis in the pituitary gland, which induces the secretion of thyroid-stimulating hormone. Thyroid-stimulating hormone locally activates thyroid hormone via induction of type 2 deiodinase in the mediobasal hypothalamus. Thyroid hormone then induces morphological changes in the terminals of neurons that express gonadotropin-releasing hormone and facilitates gonadotropin secretion from the pituitary gland. In mammals, light information is received by photoreceptors in the retina and neurally transmitted to the pineal gland, where it inhibits the synthesis and secretion of melatonin, which is crucial for seasonal reproduction. Importantly, the signaling pathway downstream of light detection and signaling is fully conserved between mammals and birds. In fish, the regulatory components of seasonal reproduction are integrated, from light detection to neuroendocrine output, in a fish-specific organ called the saccus vasculosus. Various physiological processes in humans are also influenced by seasonal environmental changes. The findings discussed herein may provide clues to addressing human diseases, such as seasonal affective disorder.

Key Words

- ▶ photoperiodism
- ▶ seasonal reproduction
- ▶ thyroid hormone
- ▶ thyroid-stimulating hormone
- ▶ type 2 deiodinase

Journal of Endocrinology
(2016) **229**, R117–R127

Introduction

In mid- to high-latitude regions of the world, environmental factors such as temperature, day length and precipitation drastically change throughout the year. Organisms living in these regions anticipate seasonal changes using intrinsic timing mechanisms and adapt their physiology to the

forthcoming seasons. In chipmunks, for example, seasonal hibernation is regulated by a circannual clock that oscillates with a period of approximately 1 year (Kondo *et al.* 2006). Many organisms use photoperiod, or relative day length, as a cue to initiate seasonal adaptations. The circadian

clock, an oscillator with a period of approximately 24h, is thought to be responsible for measuring the day length in a phenomenon called photoperiodism (Bünning 1969). Many biological processes are photoperiodic, for example, flowering and dormancy in plants (Heino *et al.* 2010, Izawa 2010, Putterill *et al.* 2010), as well as reproduction, diapause (Saunders 2010), migration (Saunders 2010) and molting (Fischer *et al.* 2008) in animals. Here, we focus on the mechanisms underlying photoperiodic regulation of reproduction in vertebrates, in which this phenomenon has been extensively studied.

Seasonal reproduction in animals

Reproductive mechanisms in animals can be classified into two categories: seasonal and nonseasonal reproduction. Nonseasonal reproduction is mainly observed in animals inhabiting tropical areas, where annual environmental changes are relatively small. Animals in these areas exhibit reproductive behavior all year round. In contrast, seasonal breeders develop gonads and display reproductive behavior during specific times of the year in order to limit the delivery of offspring between spring and early summer. These seasons are optimal for raising offspring because the climate is moderate and sufficient food is available. A critical factor in determining the timing of mating is the length of the period of gestation or incubation of fertilized eggs (Lincoln & Short 1980).

Animals can be categorized as long-day (LD) breeders and short-day (SD) breeders based on when they are fertile relative to day length. LD breeders are fertile during spring when the days are longer, whereas SD breeders display reproductive behaviors during autumn when the day length shortens. For example, the breeding behavior of birds and rodents is observed from spring to early summer because their incubation/gestation period lasts only a few weeks. Similarly, mating of large animals with gestation periods of approximately 1 year also occurs in spring. However, SD breeders, such as goats and sheep, with gestation periods of approximately half a year breed during autumn and early winter.

The critical day length refers to the threshold value of light phase duration that is required to trigger a photoperiodic response. Reproductive behaviors in LD breeders are observed when the light phase lasts longer than the critical day length and vice versa in SD breeders (Bünning 1969). During the process of domestication, animals that show a nonseasonal reproduction phenotype have been artificially selected because of

their higher yield of offspring and animal products. Therefore, understanding the mechanism of seasonal reproduction will contribute to increased productivity in livestock farming (Lincoln & Short 1980). In this review, we first describe the current knowledge of the regulatory mechanism of seasonal reproduction from studies using Japanese quail as an avian model. Secondly, we show that a similar mechanism exists in mammals and fish. We conclude with a discussion about the evolution of seasonal reproduction.

Roles and metabolic pathway of thyroid hormone

Thyroid hormone (TH) is a tyrosine-based hormone that was originally known to promote the maturation of juvenile animals and maintain the basal metabolic rate (Joseph-Bravo *et al.* 2015). There has been increasing evidence that TH is responsible for seasonal reproduction (Dawson *et al.* 2001). Furthermore, removal of the thyroid gland prevents seasonal development/regression of gonads in several avian species and in sheep (Moenter *et al.* 1991, Dawson 1993, 1998, Parkinson & Follett 1995). Administration of TH ameliorates the effect of thyroidectomy and mimics exposure to light conditions that induce gonadal development (Follett & Nicholls 1985, Goldsmith & Nicholls 1992, Wilson & Reinert 2000).

It is well established that TH negatively regulates its own production through the hypothalamic–pituitary–thyroid (HPT) axis. Thyrotropin-releasing hormone (TRH) secreted from the hypothalamus induces the pars distalis of the anterior pituitary gland to release thyroid-stimulating hormone (TSH), which in turn stimulates the thyroid gland to synthesize and release TH. Thyroxine (T_4) and 3,5,3'-triiodothyronine (T_3) are the precursor and active forms of THs, respectively (Fig. 1) (Joseph-Bravo *et al.* 2015). Both T_4 and T_3 are produced in the follicle cells of the thyroid gland by proteolytic liberation from thyroglobulin, a large iodinated glycoprotein, and released into circulation (Dunn & Dunn 2004). In target tissues, THs are transported across the membrane into cells by transporter proteins, such as monocarboxylate transporter 8 (MCT8) (Friesema *et al.* 2003, Herwig *et al.* 2009) and organic anion-transporting peptide 1c1 (Oatp1c1) (Abe *et al.* 2002, Hagenbuch & Meier 2004). Once inside the cell, T_4 is converted into active T_3 by type 2 deiodinase (DIO2) by elimination of an iodine residue at the 5' position (Fig. 1). DIO2 locally activates TH at the cellular level without affecting the HPT axis.

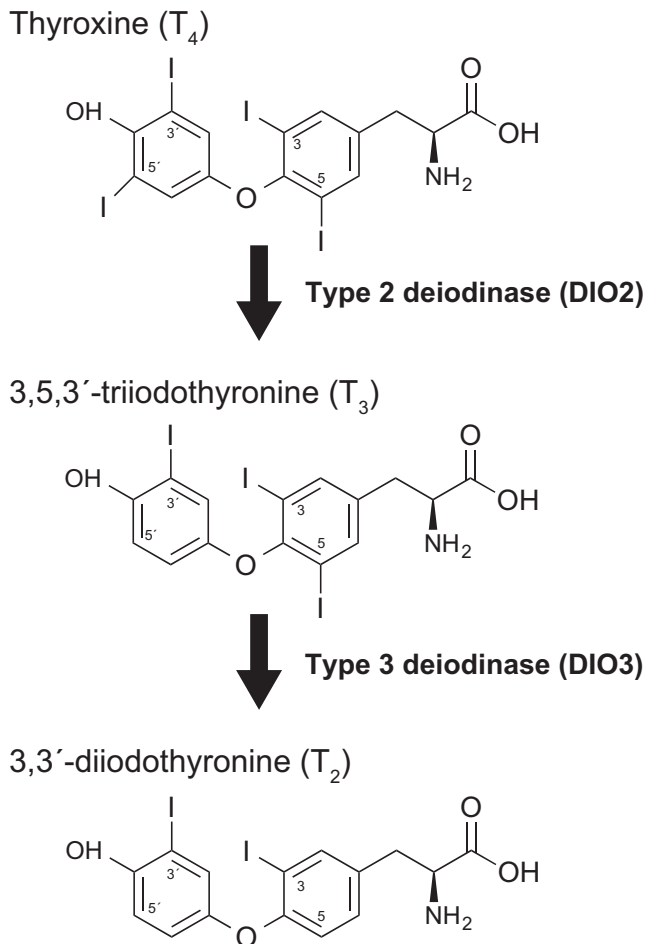


Figure 1
Activation and inactivation of thyroid hormones by iodothyronine deiodinases. Thyroxine (T_4), the thyroid hormone precursor, is converted into the active form, 3,5,3'-triiodothyronine (T_3), by deiodination at the 5' position mediated by DIO2. DIO3 inactivates T_3 by releasing the C-5 iodine to form the T_2 .

TH in the mediobasal hypothalamus regulates seasonal reproduction in quail

Japanese quail (*Coturnix japonica*) is a LD breeder belonging to the family Phasianidae that includes chicken and pheasant. Gonadal development and regression in quail shows a clear photoperiodic response. Under SD conditions, gonads are kept undifferentiated; however, 1 day after transfer into LD conditions, serum gonadotropin levels increase and within 2 weeks, and the weight of testis increases by 100 times. Interestingly, continuous illumination during the daytime is not necessary, but a light pulse during the critical time window (photoinducible phase) is sufficient to induce a photoperiodic response. In quails, 15 min of light given 14h after dawn triggers

gonadal development (Follett & Sharp 1969). The mediobasal hypothalamus (MBH) is thought to be the regulatory center for seasonal reproduction in birds. MBH lesions block light-induced gonadal development even under LD conditions (Sharp & Follett 1969). Moreover, electrical stimulation of MBH increases the concentration of LH in plasma (Konishi *et al.* 1987) and testicular growth (Ohta *et al.* 1984). Furthermore, c-Fos, a neuronal activation marker, is induced in the MBH in response to a single LD stimulus (Meddle & Follett 1995, 1997). Collectively, these phenomena support the notion that the MBH plays central roles in regulating seasonal reproduction.

In order to identify the components of the photoperiodic signaling cascade, genes differentially expressed in the MBH between LD and SD conditions were explored by subtractive hybridization. Expression of the *DIO2* gene is significantly induced by a 1-h light pulse during the photoinducible phase (Yoshimura *et al.* 2003). In contrast to *DIO2* induction, expression of type 3 deiodinase gene (*DIO3*), the product of which inactivates T_3 by releasing C-5 iodine (Fig. 1), is repressed under LD conditions (Yasuo *et al.* 2005). These results suggest that local activation of TH in the MBH plays a key role in the regulation of seasonal reproduction. In fact, the concentration of T_3 in the MBH is 10 times higher in LD conditions than in SD conditions (Yoshimura *et al.* 2003). MBH *DIO2* mRNA is localized to the ependymal cells around the third ventricle (Yoshimura *et al.* 2003). Chronic intraventricular administration of T_3 in quail stimulates testicular development even in SD conditions (Yoshimura *et al.* 2003). These results confirm that the local concentration of T_3 at the MBH is increased by induction and repression of *DIO2* and *DIO3*, respectively, and facilitates photoperiodic gonadal development.

Locally activated TH induces neuronal plasticity in the MBH

In vertebrates, gonadal development is regulated by the HPG axis. Gonadotropin-releasing hormone (GnRH) is secreted from the hypothalamus and stimulates the release of gonadotropins, such as luteinizing hormone and follicle-stimulating hormone, from the anterior pituitary gland. These hormones act on the testis and ovary to facilitate gonadal development and the production of steroid hormones, including androgen, estrogen and progesterone. Therefore, seasonal breeders activate the HPG axis only in the breeding season.

TH is involved in neural development and plasticity in the central nervous system (Bernal 2002), raising the possibility that locally activated T_3 in the MBH promotes the development of testis via modification of neuroendocrine pathways. TH receptors exist in the median eminence of the MBH where terminals of GnRH neurons project (Yoshimura *et al.* 2003). Electron microscopy revealed that terminal morphology of GnRH neurons varied according to the photoperiod. GnRH nerve terminals are wrapped with endfeet of glial processes in SD conditions, whereas in LD conditions, the terminals contact the basal lamina of capillary vessels and allow GnRH secretion into the bloodstream (Yamamura *et al.* 2004). It is possible that these morphological changes induced by MBH-localized T_3 allow gonadal development only in LD conditions.

TSH is the master regulator of seasonal reproduction

In order to elucidate the signaling pathway between light stimulus and *DIO2* induction, the regulatory network of genes activated in the MBH upon light stimulus was analyzed using a chicken genome microarray. Quails housed under SD conditions (6L18D) were transferred to LD conditions (20L4D), and then time series samples of MBH were subjected to genome-wide expression analysis. At 14 h after the SD-to-LD transition, a gene encoding the β -subunit of thyroid-stimulating hormone (*TSHB*) is induced, and 4 h later, the expression of a second wave of genes, including *DIO2*, is increased (Nakao *et al.* 2008). TSH is a glycoprotein hormone that consists of α - and β -subunits (Magner 1990, Vassart & Dumont 1992). *TSHB* mRNA is localized in the pars tuberalis (PT) (Nakao *et al.* 2008) of the anterior pituitary gland that surrounds the median eminence. Intracerebroventricular administration of TSH increases the testis size to the same degree as seen in the LD condition (Nakao *et al.* 2008).

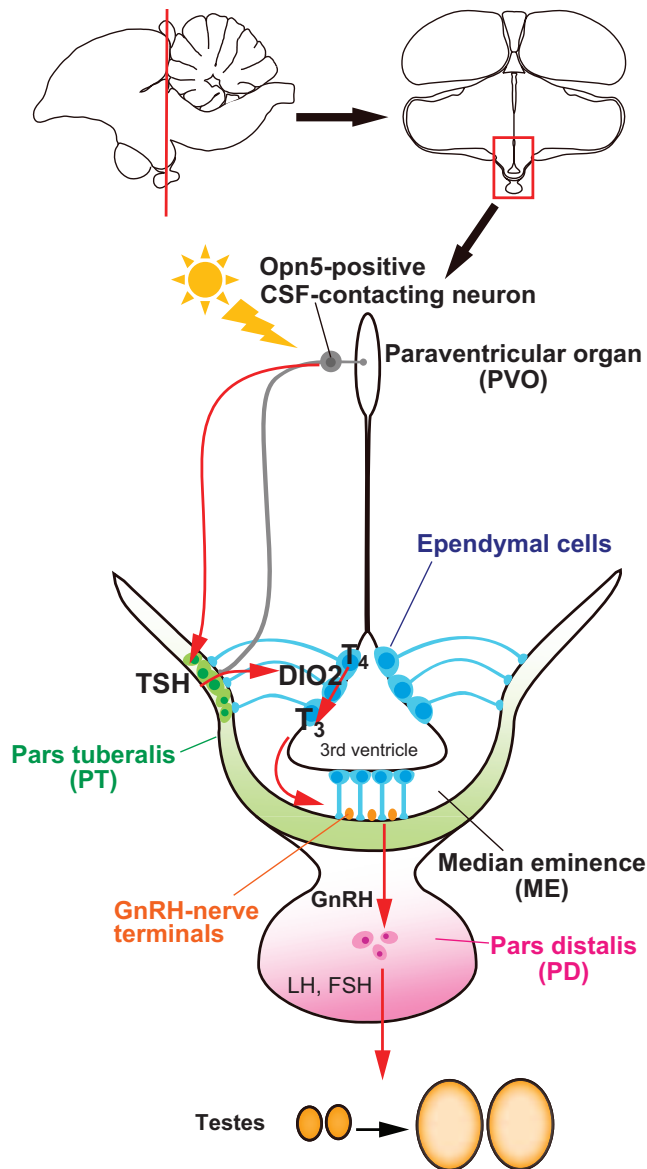
TSH receptor (TSHR) is highly expressed in ependymal cells that coexpress *DIO2*. These results suggest that induction of TSH in the PT (PT-TSH) triggers a photoperiodic response and stimulates the expression of *DIO2*. TSHRs are G protein-coupled receptors that induce genes flanked by cAMP-responsive elements (CREs) via activation of $G_s\alpha$ -cAMP signaling pathway (Magner 1990, Vassart & Dumont 1992, Walton & Rehfuss 1992). The quail *DIO2* gene possesses CRE sequences in its 5'-flanking region. A luciferase reporter gene containing the *DIO2* upstream region is induced by TSH administration, and mutations in the CRE sequences abolish luciferase expression (Nakao

et al. 2008). These results demonstrate that PT-TSH is a master regulatory factor of the photoperiodic response downstream of photoreception.

The induction of TSH in the pars distalis (PD-TSH) of the anterior pituitary is known to stimulate the thyroid gland to synthesize and release TH, which results in increasing basal metabolic rates (Magner 1990, Joseph-Bravo *et al.* 2015). Uncovering how PT-TSH and PD-TSH avoid functional crosstalk after release into the circulation was an important issue. In mice, PT-TSH and PD-TSH are subjected to tissue-specific glycosylation; PD-TSH contains sulfated biantennary *N*-glycans and is rapidly degraded in the liver (Magner 1990, Ikegami *et al.* 2014). However, PT-TSH is modified with sialylated multibranching *N*-glycans and forms a macro-TSH complex with immunoglobulin or albumin in the blood, which inactivates circulating PT-TSH and prevents stimulation of the thyroid gland (Ikegami *et al.* 2014).

Photoreceptors regulating avian photoperiodism

In addition to photoreceptors in the retina, nonmammalian vertebrates have extraretinal photoreceptors located in the pineal gland (Okano *et al.* 1994) and the brain; deep brain photoreceptors are thought to be responsible for avian photoperiodism (Benoit 1935, Menaker *et al.* 1970). As expected, photoperiodicity is not disrupted by the removal of the eyes or pineal gland in quail (Siopes & Wilson 1974). Among the 12 opsin superfamily genes in the chicken genome, *OPN5* is localized to the cerebrospinal fluid (CSF)-contacting neurons in the hypothalamic paraventricular organ (PVO) (Nakane *et al.* 2010). Cell bodies of these neurons project dendrites to the third ventricle, and their axons terminate in the vicinity of the PT (Nakane *et al.* 2010). In *Xenopus* oocytes with forced *OPN5* expression, exposure to light ranging from ultraviolet (UV)-B to blue activates a membrane current under voltage clamp conditions, demonstrating that *OPN5* is a short-wavelength-sensitive photopigment (Nakane *et al.* 2010). Testicular growth is observed in eye-patched, pinealectomized quail upon exposure to light in the UV-to-blue region of spectrum, supporting the hypothesis that *OPN5* is a deep brain photoreceptor that regulates photoperiodicity in quail (Nakane *et al.* 2010). Furthermore, *OPN5*-positive CSF-contacting neurons in the PVO located in the quail MBH are intrinsically photosensitive (Nakane *et al.* 2014). The current understanding of the signal transduction pathway for photoperiodicity is summarized in Fig. 2.

**Figure 2**

A schematic diagram of the signal transduction cascade for seasonal reproduction in birds. Light information is received by deep brain photoreceptors, such as OPN5, and then transmitted to the pars tuberalis (PT) of the pituitary gland, where TSH is induced. TSH acts on ependymal cells to induce DIO2, which converts the TH precursor T₄ into the active form T₃. T₃ induces morphological changes in GnRH nerve terminals and glial processes, thereby facilitating GnRH secretion, resulting in gonadal development.

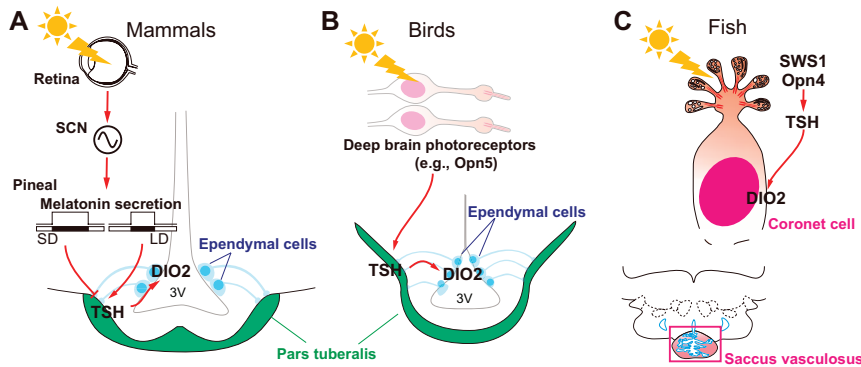
Regulatory mechanism for mammalian seasonal reproduction

The retina is the only photoreceptive organ in mammals. Light information from the retina is transmitted to the pineal gland via the suprachiasmatic nucleus (SCN), which is the location of the master circadian clock

(Morin *et al.* 1977). Pinealectomy disrupts photoperiodic responses in reproduction (Pévet 1988), suggesting that the pineal gland relays photoperiodic information. Melatonin is a serotonin-derived hormone produced in the pineal gland (Reiter 1980). Upon synthesis, melatonin is immediately released into circulation. Melatonin synthesis and secretion shows a clear day–night variation with high levels at night and trace amounts during the day (Klein & Moore 1979), which is directly regulated by arylalkylamine *N*-acetyltransferase (AANAT) activity in the pineal. AANAT is a rate-limiting enzyme of melatonin synthesis catalyzing acetylation of serotonin, which is rapidly degraded by light exposure (Klein & Moore 1979). Additionally, the circadian clock activates the transcription of *AANAT* mRNA during the night via an upstream CRE (Foulkes *et al.* 1997). Therefore, information regarding environmental light–darkness cycles is physiologically represented by the duration of melatonin synthesis and secretion by the pineal gland.

Melatonin receptors are highly expressed in the PT (Dardente *et al.* 2003), which is consistent with the notion that melatonin mediates photoperiodic information. LD stimuli induce *DIO2* expression in ependymal cells in hamsters (Watanabe *et al.* 2004). Intraperitoneal injection with melatonin inhibits *DIO2* expression and regression of the testis even under LD conditions (Watanabe *et al.* 2004). Although most of inbred mouse lines are genetically deficient in melatonin synthesis, CBA/N is one of the few melatonin-proficient strains of mice. In the CBA/N mouse brain, expression of *TSHB* and *DIO2* is upregulated by exposure to long light periods (Ono *et al.* 2008). Although these genes are not photoperiodically regulated and they are not increased even under LD conditions in the melatonin-deficient C57BL/6J strain, intraperitoneal injection of melatonin reduces the expression of *TSHB* and *DIO2* (Ono *et al.* 2008). Moreover, *DIO2* inhibition by melatonin injection is not observed in a *TSHR*-deleted strain (Ono *et al.* 2008), nor in melatonin receptor MT1 null mice (Yasuo *et al.* 2009). It is important to note that the phototransduction mechanism is different in mammals and birds, but the downstream signaling pathway regulating seasonal reproduction is conserved among avian and mammalian species (Fig. 3). *TSHB* functions as a master control gene of seasonal reproduction in both mammals and birds.

TH is involved in seasonal reproduction also in SD breeding mammals. In Saanen goats (*Capra hircus*), *DIO2* expression and T₃ content in the MBH are suppressed in LD conditions, which is opposite to the LD breeders (Yasuo *et al.* 2006). By contrast, PT-TSH expression in

**Figure 3**

Universality and diversity of photoperiodic signaling mechanisms in vertebrates. In mammals, light information received in the retina is transmitted to the pineal gland via the SCN, the location of the master circadian clock. Melatonin synthesis and secretion in the pineal gland is a reflection of photoperiod, because light and the circadian clock regulate its production, which is higher in the night than in the day. Melatonin inhibits the induction of TSH in the PT; therefore, the signaling cascade downstream of TSH is activated only under long-day conditions (A). In birds, light signals received by deep brain photoreceptors directly induce TSH in the PT (B). In fish, the entire photoperiodic signaling machinery is integrated in the coronet cells located in the fish-specific SV (C).

Soay sheep (*Ovis aries*) is stimulated under LD conditions followed by *DIO2* expression in MBH (Hanon *et al.* 2008). The photoperiodic TSH–TH signaling pathway is widely conserved; however, the downstream events may be different among species.

Kisspeptin and RFRPs (RFamide-related peptides), which belong to the RFamide superfamily, are involved in the regulation of reproductive activity (Tsutsui *et al.* 2010). Kisspeptin stimulates GnRH release via G protein-coupled receptor GPR54 located at the surface of GnRH neurons resulting in activation of the HPG axis (Oakley *et al.* 2009). In LD breeding rodents, melatonin inhibits secretion of kisspeptin from the hypothalamic arcuate nucleus (Revel *et al.* 2006, Ansel *et al.* 2010), and administration of kisspeptin restores the reproductive activity in SD conditions (Revel *et al.* 2006, Ansel *et al.* 2011). RFRP-1 and -3 peptides were originally identified as mammalian orthologs of gonadotropin inhibitory hormone (GnIH) that inhibits the HPG axis in birds (Tsutsui *et al.* 2013). In mammals, the effects of RFRPs on seasonal reproduction are different among species. Administration of RFRP-3 inhibits the activity of GnRH neurons in sheep (Clarke *et al.* 2008), whereas in Syrian hamsters, RFRP-3 stimulates GnRH secretion under the control of melatonin (Ansel *et al.* 2012). In Siberian hamsters, the effect of central administration of RFRP peptide is dependent on the photoperiod; it inhibits and stimulates LH release in LD and SD conditions, respectively (Ubuka *et al.* 2012). It is controversial whether these peptides are the primary targets of inhibitory melatonin signaling or the indirect ones located at the downstream of TSH–TH signaling cascade (Simonneaux *et al.* 2013). Further studies are required to clarify this issue.

In the photoresponsive rat strain Fischer 344, the retinoic acid (RA) signaling pathway is also activated in LD conditions (Helfer *et al.* 2012, Tavolaro *et al.* 2015).

As the temporal expression profiles of TH signaling- and RA signaling-related genes are similar (Tavolaro *et al.* 2015), it is possible that these two pathways coordinately regulate seasonal reproduction.

Regulation of seasonal reproduction in fish

Seasonal reproduction is widely observed in fish. For example, medaka is an LD breeder that develops gonads from spring to summer (Koger *et al.* 1999). Salmonidae fish are SD breeders that swim upstream to their home river in autumn for spawning. Despite lacking an anatomical site homologous to PT, TH is known to affect the reproduction of fish (Cyr *et al.* 1988). In masu salmon, *TSHB* and *DIO2* mRNAs were localized in the saccus vasculosus (SV), a circumventricular organ located caudal to the pituitary gland (Nakane *et al.* 2013). The removal of SV results in loss of photoperiodicity, which confirms that SV functions as a regulatory center for seasonal reproduction (Nakane *et al.* 2013). The photoreceptor that is responsible for photoperiodicity had long been unknown in fish. The removal of the eyes and pineal gland has limited effect on photoperiodicity, suggesting that deep brain photoreceptors might also exist in fish (Borg 2010). As expected, four rhodopsin family genes, *RH1*, *SWS1*, *LWS* and *OPN4* are expressed in the SV (Nakane *et al.* 2013). The SV consists of coronet cells, CSF-contacting cells and supporting cells. Coronet cells have a crown-like morphology with globule-tipped cilia protruding from cell bodies (Fig. 3). Within coronet cells, the TSH β , SWS1 and OPN4 proteins are localized in the globules of cilia, whereas DIO2 protein is expressed in cell bodies (Nakane *et al.* 2013), indicating that light information received at the globules regulates expression of TSH and DIO2.

Although the regulation of seasonal reproduction seems to be conserved in vertebrates, the anatomical regions responsible for photoperiodic signal transduction differ across the classes of vertebrates. The mammalian photoperiodic response is initiated by light signals received by the retina, which are then transmitted to the hypothalamus where TSH secretion and TH activation by DIO2 take place. In birds, photoreception as well as TSH secretion and DIO2 induction also occur in the hypothalamus. In fish, which are evolutionarily lower than mammalian and avian species, all components of the photoperiodic signaling are integrated into a single anatomical region, the SV. This is analogous to the functional differences in the pineal gland for circadian systems. The mammalian pineal gland is an endocrine organ that synthesizes and releases melatonin under the control of photic input from the retina and the circadian clock in the SCN (Morin *et al.* 1977), whereas the pineal gland of nonmammalian species contains an entire circadian clock system consisting of the input (photoreceptor), oscillator (circadian clock), and output (synthesis and release of melatonin) (Takahashi *et al.* 1980, Menaker & Wisner 1983). It is interesting to note that a recent developmental study identified common transcription factors in the SV and pituitary gland of rainbow trout (Maeda *et al.* 2015).

Measurement of day length using the circadian clock

The idea that the circadian clock is involved in the photoperiodic regulation of seasonality was first proposed over 50 years ago (Bünning 1960). This has since been demonstrated to be true in both white-crowned sparrow (Follett *et al.* 1974) and quail (Follett & Sharp 1969), where the photoinducible phase occurs in a circadian manner. However, how the circadian clock determines the specific photoinducible phase remains elusive. Historically, researchers have proposed two theories: the internal and the external coincidence models (Pittendrigh *et al.* 1972). In the external coincidence model, the photoinducible phase is determined by a circadian oscillator, and light entrains the oscillations as well as triggers the photoperiodic response. However, the internal coincidence model predicts that photoperiodic responses are induced when two or more oscillations are in a certain phase relationship. In this model, light serves only to entrain oscillations. It is widely accepted that the circadian clock

generates an oscillation with a period of approximately 24 h by a transcriptional–translational feedback loop, in which translational products of clock genes inhibit their own transcription (Hardin & Panda 2013).

In mammals, photoperiodicity is likely regulated by the circadian clock located in the SCN, because lesions of the SCN disrupt photoperiodic responses (Rusak & Morin 1976). In mammals and birds, the core oscillator of the circadian clock is composed of the clock genes *Period* (*Per*), *Cryptochrome* (*Cry*), *Bmal1* and *Clock*. These genes are expressed rhythmically not only in the SCN but also in brain regions responsible for photoperiodicity, such as the MBH, PT and pineal gland (Yasuo *et al.* 2003, Johnston *et al.* 2005, Tournier *et al.* 2007). Changes in photoperiod affect the phase relationship between the expression profiles of ovine *Per1* and *Cry1* in the SCN and PT, implying that these genes function as an internal coincidence timer (Lincoln *et al.* 2002); however, this is not the case in mice (Ikegami *et al.* 2013). Furthermore, disruption of *Per2* abolishes rhythmic locomotor activity and the expression of other clock genes, but it does not affect photoperiodic induction of *Tshb*, *Dio2* and *Dio3* (Ikegami *et al.* 2013). Therefore, further studies are necessary to fully elucidate the involvement of not only known clock genes but also novel clock factors in the photoperiodic time measurement.

To achieve this, a chemical biology approach might be useful. Recently, small molecules that affect circadian parameters, such as period and amplitude, have been identified by cell-based high-throughput chemical library screening (Wallach & Kramer 2015). By this method, small compounds that lengthen the circadian period by acting directly on the clock protein CRY have been discovered (Hirota *et al.* 2012). We have extended this study by performing structure–activity relationship (SAR) analyses, and as a result, we have developed novel period-shortening molecules (Oshima *et al.* 2015). Clock-modulating compounds might be useful tools to understand how the circadian clock regulates seasonal reproduction by *in vivo* administration of these molecules. Moreover, these compounds might be applied to treatment of human seasonal disorders, such as seasonal affective disorder (SAD, see next).

Seasonal rhythms in humans

Various physiological activities in humans show seasonal fluctuations. Temporal profiles of more than 4000

protein-coding mRNAs in white blood cells and adipose tissue show seasonal variations, which differ between Europeans and Africans. Expression of genes related to immunity and risk biomarkers for cardiovascular and psychiatric diseases increase in winter in Europeans (Dopico *et al.* 2015).

SAD is a disease that is characterized by depression-like symptoms from autumn to winter with remission or slight hypomania from spring to summer (Rosenthal *et al.* 1984). A recent study revealed more frequent depression-like behavior in mice kept in SD conditions compared with those kept in LD conditions (Otsuka *et al.* 2014). The level of serotonin in the brain is also decreased in LD conditions (Otsuka *et al.* 2014). Together, these results raise the possibility that the mouse model recapitulates human seasonal affective disorder. The relationship between TH and depression has long been discussed (Wiersinga 2014); therefore, understanding the mechanism that animals use to sense seasonal changes may help humans address and possibly treat seasonal disorders.

Concluding remarks

Studies in the past two decades have uncovered an evolutionarily conserved mechanism for photoperiodic signal transduction. At the same time, species-specific aspects have also become apparent. These findings have contributed to a greater understanding of seasonal reproduction and photoperiodism, and might be useful in developing strategies to increase animal production in livestock farming, as well as therapies for human seasonal disorders. Additional interdisciplinary approaches, such as chemical biology or molecular epidemiology, might also be helpful in achieving these aims.

Declaration of interest

The authors declare that there is no conflict of interest that could be perceived as prejudicing the impartiality of this review.

Funding

This work was supported by the JSPS KAKENHI Grant Number 26000013, Human Frontier Science Program (RGP0030/2015).

Acknowledgment

We thank Dr Kathy Tamai for comments on the manuscript.

References

- Abe T, Suzuki T, Unno M, Tokui T & Ito S 2002 Thyroid hormone transporters: recent advances. *Trends in Endocrinology and Metabolism* **13** 215–220. (doi:10.1016/S1043-2760(02)00599-4)
- Ansel L, Bolborea M, Bentsen AH, Klosen P, Mikkelsen JD & Simonneaux V 2010 Differential regulation of kiss1 expression by melatonin and gonadal hormones in male and female Syrian hamsters. *Journal of Biological Rhythms* **25** 81–91. (doi:10.1177/0748730410361918)
- Ansel L, Bentsen AH, Ancel C, Bolborea M, Klosen P, Mikkelsen JD & Simonneaux V 2011 Peripheral kisspeptin reverses short photoperiod-induced gonadal regression in Syrian hamsters by promoting GnRH release. *Reproduction* **142** 417–425. (doi:10.1530/REP-10-0313)
- Ancel C, Bentsen AH, Sébert ME, Tena-Sempere M, Mikkelsen JD & Simonneaux V 2012 Stimulatory effect of RFRP-3 on the gonadotrophic axis in the male Syrian hamster: the exception proves the rule. *Endocrinology* **153** 1352–1363. (doi:10.1210/en.2011-1622)
- Benoit J 1935 Le rôle des yeux dans l'action stimulante de la lumière sur le développement testiculaire chez le canard. *Comptes Rendus des Séances et Mémoires de la Société de Biologie* **118** 669–671.
- Bernal J 2002 Action of thyroid hormone in brain. *Journal of Endocrinological Investigation* **25** 268–288. (doi:10.1007/BF03344003)
- Borg B 2010 Photoperiodism in fishes. In *Photoperiodism the Biological Calendar*, pp 371–398. Eds Nelson RJ, Denlinger DL & Somers DE. New York, NY, USA: Oxford University Press.
- Bünning E 1960 Circadian rhythms and the time measurement in photoperiodism. *Cold Spring Harbor Symposia on Quantitative Biology* **25** 249–259. (doi:10.1101/SQB.1960.025.01.026)
- Bünning E 1969 Common features of photoperiodism in plants and animals. *Photochemistry and Photobiology* **9** 219–228. (doi:10.1111/j.1751-1097.1969.tb07286.x)
- Clarke IJ, Sari IP, Qi Y, Smith JT, Parkington HC, Ubuka T, Iqbal J, Li Q, Tilbrook A, Morgan K, *et al.* 2008 Potent action of RFamide-related peptide-3 on pituitary gonadotropes indicative of a hypophysiotropic role in the negative regulation of gonadotropin secretion. *Endocrinology* **149** 5811–5821. (doi:10.1210/en.2008-0575)
- Cyr DG, Bromage NR, Duston J & Eales JG 1988 Seasonal patterns in serum levels of thyroid hormones and sex steroids in relation to photoperiod-induced changes in spawning time in rainbow trout, *Salmo gairdneri*. *General and Comparative Endocrinology* **69** 217–225. (doi:10.1016/0016-6480(88)90008-1)
- Dardente H, Klosen P, Pévet P & Masson-Pévet M 2003 MT1 melatonin receptor mRNA expressing cells in the Pars Tuberalis of the European hamster. *Journal of Neuroendocrinology* **15** 778–786. (doi:10.1046/j.1365-2826.2003.01060.x)
- Dawson A 1993 Thyroidectomy progressively renders the reproductive system of starlings (*Sturnus vulgaris*) unresponsive to changes in daylength. *Journal of Endocrinology* **139** 51–55. (doi:10.1677/joe.0.1390051)
- Dawson A 1998 Thyroidectomy of house sparrows (*Passer domesticus*) prevents photo-induced testicular growth but not the increased hypothalamic gonadotrophin-releasing hormone. *General and Comparative Endocrinology* **110** 196–200. (doi:10.1006/gcen.1998.7605)
- Dawson A, King VM, Bentley GE & Ball GF 2001 Photoperiodic control of seasonality in birds. *Journal of Biological Rhythms* **16** 365–380. (doi:10.1177/074873001129002079)
- Dopico XC, Evangelou M, Ferreira RC, Guo H, Pekalski ML, Smyth DJ, Cooper N, Burren OS, Fulford AJ, Hennig BJ, *et al.* 2015 Widespread seasonal gene expression reveals annual differences in human immunity and physiology. *Nature Communications* **6** 7000. (doi:10.1038/ncomms8000)

- Dunn JT & Dunn AD 2004 Update on intrathyroidal iodine metabolism. *Thyroid* **11** 407–414. (doi:10.1089/105072501300176363)
- Fischer TW, Slominski A, Tobin DJ & Paus R 2008 Melatonin and the hair follicle. *Journal of Pineal Research* **44** 1–15. (doi:10.1111/j.1600-079X.2007.00512.x)
- Follett BK & Nicholls TJ 1985 Influences of thyroidectomy and thyroxine replacement on photoperiodically controlled reproduction in quail. *Journal of Endocrinology* **107** 211–221. (doi:10.1677/joe.0.1070211)
- Follett BK & Sharp PJ 1969 Circadian rhythmicity in photoperiodically induced gonadotrophin release and gonadal growth in the quail. *Nature* **223** 968–971. (doi:10.1038/223968b0)
- Follett BK, Mattocks PW Jr & Farmer DS 1974 Circadian function in the photoperiodic induction of gonadotropin secretion in the white-crowned sparrow, *Zonotrichia leucophrys gambelii*. *PNAS* **71** 1666–1669.
- Foulkes NS, Whitmore D & Sassone-Corsi P 1997 Rhythmic transcription: The molecular basis of circadian melatonin synthesis. *Biology of the Cell* **89** 487–494 (doi:10.1016/S0248-4900(98)80004-X)
- Friesema EC, Ganguly S, Abdalla A, Manning Fox JE, Halestrap AP & Visser TJ 2003 Identification of monocarboxylate transporter 8 as a specific thyroid hormone transporter. *Journal of Biological Chemistry* **278** 40128–40135. (doi:10.1074/jbc.M300909200)
- Goldsmith AR & Nicholls TJ 1992 Thyroxine effects upon reproduction, prolactin secretion and plumage moult in thyroidectomised European starlings *Sturnus vulgaris*. *Ornis Scandinavica* **23** 398–404. (doi:10.2307/3676666)
- Hagenbuch B & Meier PJ 2004 Organic anion transporting polypeptides of the OATP/SLC21 family: phylogenetic classification as OATP/SLCO superfamily, new nomenclature and molecular/functional properties. *Pfluger Archiv* **447** 653–665. (doi:10.1007/s00424-003-1168-y)
- Hanon EA, Lincoln GA, Fustin JM, Dardente H, Masson-Pévet M, Morgan PJ & Hazlerigg DG 2008 Ancestral TSH mechanism signals summer in a photoperiodic mammal. *Current Biology* **18** 1147–1152. (doi:10.1016/j.cub.2008.06.076)
- Hardin PE & Panda S 2013 Circadian timekeeping and output mechanisms in animals. *Current Opinion in Neurobiology* **23** 724–731. (doi:10.1016/j.conb.2013.02.018)
- Heino P, Nilsson O & Palva T 2010 Photoperiodic control of dormancy and flowering in trees. In *Photoperiodism the Biological Calendar*, pp 88–106. Eds Nelson RJ, Denlinger DL & Somers DE. New York, NY, USA: Oxford University Press.
- Helfer G, Ross AW, Russell L, Thomson LM, Shearer KD, Goodman TH, McCaffery PJ & Morgan PJ 2012 Photoperiod regulates vitamin A and Wnt/ β -catenin signaling in F344 rats. *Endocrinology* **153** 815–824. (doi:10.1210/en.2011-1792)
- Herwig A, Wilson D, Logie TJ, Boelen A, Morgan PJ, Mercer JG & Barrett P 2009 Photoperiod and acute energy deficits interact on components of the thyroid hormone system in hypothalamic tanycytes of the Siberian hamster. *American Journal of Physiology: Regulatory, Integrative and Comparative Physiology* **296** R1307–R1315. (doi:10.1152/ajpregu.90755.2008)
- Hirota T, Lee JW, St John PC, Sawa M, Iwaisako K, Noguchi T, Pongsawakul PY, Sonntag T, Welsh DK, Brenner DA, et al. 2012 Identification of small molecule activators of cryptochrome. *Science* **337** 1094–1097. (doi:10.1126/science.1223710)
- Ikegami K, Iigo M & Yoshimura T 2013 Circadian clock gene *Per2* is not necessary for the photoperiodic response in mice. *PLoS ONE* **8** e58482. (doi:10.1371/journal.pone.0058482)
- Ikegami K, Liao XH, Hoshino Y, Ono H, Ota W, Ito Y, Nishiwaki-Ohkawa T, Sato C, Kitajima K, Iigo M, et al. 2014 Tissue-specific posttranslational modification allows functional targeting of thyrotropin. *Cell Reports* **9** 801–810. (doi:10.1016/j.celrep.2014.10.006)
- Izawa T 2010 Photoperiodic control of flowering in the short-day plant *Oryza sativa*. In *Photoperiodism the Biological Calendar*, pp 38–58. Eds Nelson RJ, Denlinger DL & Somers DE. New York, NY, USA: Oxford University Press.
- Johnston JD, Francis JP & Hazlerigg DG 2005 Photoperiod regulates multiple gene expression in the suprachiasmatic nuclei and pars tuberalis of the Siberian hamster (*Phodopus sungorus*). *European Journal of Neuroscience* **21** 2967–2974. (doi:10.1111/j.1460-9568.2005.04148.x)
- Joseph-Bravo P, Jaimes-Hoy L, Uribe RM & Charli JL 2015 TRH, the first hypophysiotropic releasing hormone isolated: control of the pituitary-thyroid axis. *Journal of Endocrinology* **226** T85–T100. (doi:10.1530/JOE-15-0124)
- Klein DC & Moore RY 1979 Pineal N-acetyltransferase and hydroxyindole-O-methyltransferase: control by the retinohypothalamic tract and the suprachiasmatic nucleus. *Brain Research* **174** 245–262. (doi:10.1016/0006-8993(79)90848-5)
- Koger CS, Teh SJ & Hinton DE 1999 Variations of light and temperature regimes and resulting effects on reproductive parameters in medaka (*Oryzias latipes*). *Biology of Reproduction* **61** 1287–1293. (doi:10.1095/biolreprod61.5.1287)
- Kondo N, Sekijima T, Kondo J, Takamatsu N, Tohya K & Ohtsu T 2006 Circannual control of hibernation by HP complex in the brain. *Cell* **125** 161–172. (doi:10.1016/j.cell.2006.03.017)
- Konishi H, Foster RG & Follett BK 1987 Evidence for daily rhythmicity in the acute release of luteinizing hormone in response to electrical stimulation in the Japanese quail. *Journal of Comparative Physiology A* **161** 315–319. (doi:10.1007/BF00615251)
- Lincoln GA & Short RV 1980 Nature's contraceptive. *Recent Progress in Hormone Research* **36** 1–52. (doi:10.1016/b978-0-12-571136-4.50007-3)
- Lincoln G, Messenger S, Andersson H & Hazlerigg D 2002 Temporal expression of seven clock genes in the suprachiasmatic nucleus and the pars tuberalis of the sheep: evidence for an internal coincidence timer. *PNAS* **99** 13890–13895. (doi:10.1073/pnas.212517599)
- Maeda R, Shimo T, Nakane Y, Nakao N & Yoshimura T 2015 Ontogeny of the saccus vasculosus, a seasonal sensor in fish. *Endocrinology* **156** 4238–4243. (doi:10.1210/en.2015-1415)
- Magner JA 1990 Thyroid-stimulating hormone: biosynthesis, cell biology, and bioactivity. *Endocrine Review* **11** 354–385. (doi:10.1210/edrv-11-2-354)
- Meddle SL & Follett BK 1995 Photoperiodic activation of fos-like immunoreactive protein in neurons within the tuberal hypothalamus of Japanese quail. *Journal of Comparative Physiology A* **176** 79–89. (doi:10.1007/BF00197754)
- Meddle SL & Follett BK 1997 Photoperiodically driven changes in Fos expression within the basal tuberal hypothalamus and median eminence of Japanese quail. *Journal of Neuroscience* **17** 8909–8918.
- Menaker M & Wisner S 1983 Temperature-compensated circadian clock in the pineal of Anolis. *PNAS* **80** 6119–6121. (doi:10.1073/pnas.80.19.6119)
- Menaker M, Roberts R, Elliott J & Underwood H 1970 Extraretinal light perception in the sparrow. III. The eyes do not participate in photoperiodic photoreception. *PNAS* **67** 320–325. (doi:10.1073/pnas.67.1.320)
- Moenter SM, Woodfill CJ & Karsch FJ 1991 Role of the thyroid gland in seasonal reproduction: thyroidectomy blocks seasonal suppression of reproductive neuroendocrine activity in ewes. *Endocrinology* **128** 1337–1344. (doi:10.1210/endo-128-3-1337)
- Morin LP, Fitzgerald KM, Rusak B & Zucker I 1977 Circadian organization and neural mediation of hamster reproductive rhythms. *Psychoneuroendocrinology* **2** 73–98. (doi:10.1016/0306-4530(77)90035-X)
- Nakane Y, Ikegami K, Ono H, Yamamoto N, Yoshida S, Hirunagi K, Ebihara S, Kubo Y & Yoshimura T 2010 A mammalian neural tissue opsin (Opsin 5) is a deep brain photoreceptor in birds. *PNAS* **107** 15264–15268. (doi:10.1073/pnas.1006393107)

- Nakane Y, Ikegami K, Iigo M, Ono H, Takeda K, Takahashi D, Uesaka M, Kimijima M, Hashimoto R, Arai N, *et al.* 2013 The saccus vasculosus of fish is a sensor of seasonal changes in day length. *Nature Communications* **4** 2108. (doi:10.1038/ncomms3108)
- Nakane Y, Shimmura T, Abe H & Yoshimura T 2014 A Intrinsic photosensitivity of a deep brain photoreceptor. *Current Biology* **24** R596–R597. (doi:10.1016/j.cub.2014.05.038)
- Nakao N, Ono H, Yamamura T, Anraku T, Takagi T, Higashi K, Yasuo S, Katou Y, Kageyama S, Uno Y, *et al.* 2008 Thyrotrophin in the pars tuberalis triggers photoperiodic response. *Nature* **452** 317–322. (doi:10.1038/nature06738)
- Oakley AE, Clifton DK & Steiner RA 2009 Kisspeptin signaling in the brain. *Endocrine Reviews* **30** 713–743. (doi:10.1210/er.2009-0005)
- Ohta M, Wada M & Homma K 1984 Induction of rapid testicular growth in Japanese quail by phasic electrical stimulation of the hypothalamic photosensitive area. *Journal of Comparative Physiology A* **154** 583–589. (doi:10.1007/BF00610171)
- Okano T, Yoshizawa T & Fukada Y 1994 Pinopsin is a chicken pineal photoreceptive molecule. *Nature* **372** 94–97. (doi:10.1038/372094a0)
- Ono H, Hoshino Y, Yasuo S, Watanabe M, Nakane Y, Murai A, Ebihara S, Korf HW & Yoshimura T 2008 Involvement of thyrotrophin in photoperiodic signal transduction in mice. *PNAS* **105** 18238–18242. (doi:10.1073/pnas.0808952105)
- Oshima T, Yamanaka I, Kumar A, Yamaguchi J, Nishiwaki-Ohkawa T, Muto K, Kawamura R, Hirota T, Yagita K, Irle S, *et al.* 2015 C-H activation generates period-shortening molecules that target cryptochrome in the mammalian circadian clock. *Angewandte Chemie International Edition in English* **54** 7193–7197. (doi:10.1002/anie.201502942)
- Otsuka T, Kawai M, Togo Y, Goda R, Kawase T, Matsuo H, Iwamoto A, Nagasawa M, Furuse M & Yasuo S 2014 Photoperiodic responses of depression-like behavior, the brains serotonergic system, and peripheral metabolism in laboratory mice. *Psychoneuroendocrinology* **40** 37–47. (doi:10.1016/j.psyneuen.2013.10.013)
- Parkinson TJ & Follett BK 1995 Thyroidectomy abolishes seasonal testicular cycles of Soay rams. *Proceedings of the Royal Society B* **259** 1–6. (doi:10.1098/rspb.1995.0001)
- Pévet P 1988 The role of the pineal gland in the photoperiodic control of reproduction in different hamster species. *Reproduction Nutrition Development* **28** 443–458. (doi:10.1051/rnd:19880310)
- Pittendrigh CS 1972 Circadian surfaces and the diversity of possible roles of circadian organization in photoperiodic induction. *PNAS* **69** 2734–2737. (doi:10.1073/pnas.69.9.2734)
- Putterill J, Stockum C & Warman G 2010 Photoperiodic flowering in the long-day plant *Arabidopsis thaliana*. In *Photoperiodism the Biological Calendar*, pp 9–37. Eds Nelson RJ, Denlinger DL & Somers DE. New York, NY, USA: Oxford University Press.
- Reiter RJ 1980 The pineal and its hormones in the control of reproduction in mammals. *Endocrine Reviews* **1** 109–131. (doi:10.1210/edrv-1-2-109)
- Revel FG, Saboureaux M, Masson-Pévet M, Pévet P, Mikkelsen JD & Simonneaux V 2006 Kisspeptin mediates the photoperiodic control of reproduction in hamsters. *Current Biology* **16** 1730–1735. (doi:10.1016/j.cub.2006.07.025)
- Rosenthal NE, Sack DA, Gillin C, Lewy AJ, Goodwin FK, Davenport Y, Mueller PS, Newsome DA & Wehr TA 1984 Seasonal affective disorder. A description of the syndrome and preliminary finding with light therapy. *Archives of General Psychiatry* **41** 72–80. (doi:10.1001/archpsyc.1984.01790120076010)
- Rusak B & Morin LP 1976 Testicular responses to photoperiod are blocked by lesions of the suprachiasmatic nuclei in golden hamsters. *Biology of Reproduction* **13** 366–374. (doi:10.1095/biolreprod15.3.366)
- Saunders DS 2010 Photoperiodism in insects: migration and diapause responses. In *Photoperiodism the Biological Calendar*, pp 218–257. Eds Nelson RJ, Denlinger DL & Somers DE. New York, NY, USA: Oxford University Press.
- Sharp PJ & Follett BK 1969 The effect of hypothalamic lesions on gonadotrophin release in Japanese quail (*Coturnix coturnix japonica*). *Neuroendocrinology* **5** 205–218. (doi:10.1159/000121861)
- Simonneaux V, Ancel C, Poirel VJ & Gauer F 2013 Kisspeptins and RFRP-3 act in concert to synchronize rodent reproduction with seasons. *Frontiers in Neuroscience* **7** 22. (doi:10.3389/fnins.2013.00022)
- Siopes TD & Wilson WO 1974 Extraocular modification of photoreception in intact and pinealectomized coturnix. *Poultry Science* **53** 2035–2041. (doi:10.3382/ps.0532035)
- Takahashi JS, Hamm H & Menaker M 1980 Circadian rhythms of melatonin release from individual superfused chicken pineal glands in vitro. *PNAS* **77** 2319–2322. (doi:10.1073/pnas.77.4.2319)
- Tavolara FM, Thomson LM, Ross AW, Morgan PJ & Helfer G 2015 Photoperiodic effects on seasonal physiology, reproductive status and hypothalamic gene expression in young male F344 rats. *Journal of Neuroendocrinology* **27** 79–87. (doi:10.1111/jne.12241)
- Tourmier BB, Dardente H, Simonneaux V, Vivien-Roels B, Pévet P, Masson-Pévet M & Vuille P 2007 Seasonal variations of clock gene expression in the suprachiasmatic nuclei and pars tuberalis of the European hamster (*Cricetus cricetus*). *European Journal of Neuroscience* **25** 1529–1536. (doi:10.1111/j.1460-9568.2007.05421.x)
- Tsutsui K, Bentley GE, Kriegsfeld LJ, Osugi T, Seong JY & Vaudry H 2010 Discovery and evolutionary history of gonadotrophin-inhibitory hormone and kisspeptin: new key neuropeptides controlling reproduction. *Journal of Neuroendocrinology* **22** 716–727. (doi:10.1111/j.1365-2826.2010.02018.x)
- Tsutsui K, Ubuka T, Bentley GE & Kriegsfeld LJ 2013 Review: regulatory mechanisms of gonadotropin-inhibitory hormone (GnIH) synthesis and release in photoperiodic animals. *Frontiers in Neuroscience* **7** 60. (doi:10.3389/fnins.2013.00060)
- Ubuka T, Inoue K, Fukuda Y, Mizuno T, Ukena K, Kriegsfeld LJ & Tsutsui K 2012 Identification, expression and physiological functions of Siberian hamster gonadotropin-inhibitory hormone. *Endocrinology* **153** 373–385. (doi:10.1210/en.2011-1110)
- Vassart G & Dumont JE 1992 The thyrotrophin receptor and the regulation of thyrocyte function and growth. *Endocrine Reviews* **13** 596–611. (doi:10.1210/edrv-13-3-596)
- Wallach T & Kramer A 2015 Chemical chronobiology: toward drugs manipulating time. *FEBS Letters* **589** 1530–1538. (doi:10.1016/j.febslet.2015.04.059)
- Walton KM & Rehfuss RP 1992 Molecular mechanisms of cAMP-regulated gene expression. *Molecular Neurobiology* **9** 197–210. (doi:10.1007/BF02780341)
- Watanabe M, Yasuo S, Watanabe T, Yamamura T, Nakao N, Ebihara S & Yoshimura T 2004 Photoperiodic regulation of type 2 deiodinase gene in djungarian hamster: possible homologies between avian and mammalian photoperiodic regulation of reproduction. *Endocrinology* **145** 1546–1549. (doi:10.1210/en.2003-1593)
- Wiersinga WN 2014 Paradigm shifts in thyroid hormone replacement therapies for hypothyroidism. *Nature Reviews Endocrinology* **10** 164–174. (doi:10.1038/nrendo.2013.258)
- Wilson FE & Reinert BD 2000 Thyroid hormone acts centrally to programme photostimulated male American tree sparrows (*Spizella arborea*) for vernal and autumnal components of seasonality. *Journal of Neuroendocrinology* **12** 87–95. (doi:10.1046/j.1365-2826.2000.00437.x)
- Yamamura T, Hirunagi K, Ebihara S & Yoshimura T 2004 Seasonal morphological changes in the neuro-glial interaction between gonadotrophin-releasing hormone nerve terminals and glial endfeet in Japanese quail. *Endocrinology* **145** 4264–4267. (doi:10.1210/en.2004-0366)
- Yasuo S, Watanabe M, Obayashi N, Ebihara S & Yoshimura T 2003 Circadian clock genes and photoperiodism: comprehensive analysis of clock gene expression in the mediobasal hypothalamus, the suprachiasmatic nucleus, and the Pineal gland of Japanese quail

under various light schedules. *Endocrinology* **144** 3742–3748. (doi:10.1210/en.2003-0435)

Yasuo S, Watanabe M, Nakao N, Takagi T, Follett BK, Ebihara S & Yoshimura T 2005 The reciprocal switching of two thyroid hormone-activating and -inactivating enzyme genes is involved in the photoperiodic gonadal response of Japanese quail. *Endocrinology* **146** 2551–2554. (doi:10.1210/en.2005-0057)

Yasuo S, Nakao N, Ohkura S, Iigo M, Hagiwara S, Goto A, Ando H, Yamamura T, Watanabe M, Watanabe T, *et al.* 2006 Long-day suppressed expression of type 2 deiodinase gene in the mediobasal hypothalamus of the Saanen goat, a short-day breeder: implication

for seasonal window of thyroid hormone action on reproductive neuroendocrine axis. *Endocrinology* **147** 432–440. (doi:10.1210/en.2005-0507)

Yasuo S, Yoshimura T, Ebihara S, Kolf HW 2009 Melatonin transmits photoperiodic signals through the MT1 melatonin receptor. *Journal of Neuroscience* **29** 2885–2889. (doi:10.1523/JNEUROSCI.0145-09.2009)

Yoshimura T, Yasuo S, Watanabe M, Iigo M, Yamamura T, Hirunagi K & Ebihara S 2003 Light-induced hormone conversion of T₄ to T₃ regulates photoperiodic response of gonads in birds. *Nature* **426** 178–181. (doi:10.1038/nature02117)

Received in final form 24 March 2016

Accepted 11 April 2016

Accepted Preprint published online 11 April 2016