

REVIEW

It's reticulated: the liver at the heart of atherosclerosis

Prabhakara R Nagareddy¹, Sunil K Noothi¹, Michelle C Flynn^{2,3} and Andrew J Murphy^{2,3}¹Department of Nutrition Sciences, University of Alabama, Birmingham, UK²Division of Immunometabolism, Baker Heart and Diabetes Institute, Melbourne, Australia³Department of Immunology, Monash University, Melbourne, AustraliaCorrespondence should be addressed to M C Flynn: michelle.flynn@baker.edu.au

Abstract

Platelets play a critical role in both the initiation and progression of atherosclerosis, and even more so in the ensuing atherothrombotic complications. Low-dose aspirin remains the mainstay of antiplatelet therapy in high-risk patients by reducing the risk of myocardial ischemia, stroke or death due to cardiovascular disease. However, antiplatelet therapies lose their efficacy in people with diabetes mellitus, increasing the risk of future atherothrombotic events. The molecular mechanisms that promote platelet hyperactivity remain unclear but could be due to glycation-induced conformational changes of platelet membranes resulting in impaired aspirin entry or less-efficient acetylation/compensatory increase in COX-2 expression in newborn platelets. Emerging evidence from our laboratory and elsewhere suggest that enhanced platelet turnover (thrombopoiesis), particularly the production of immature reticulated platelets from the bone marrow, could contribute to atherosclerotic complications. We have identified a major role for neutrophil-derived S100A8/A9, a damage-associated molecular pattern, in driving reticulated thrombopoiesis by directly interacting with its receptors on Kupffer cells in the liver. In this review, we discuss the role of hepatic inflammation in driving reticulated platelet production and suggest potential targets to control their production, improve efficacy of current antiplatelet therapies and reduce the risk of atherothrombotic complications.

Key Words

- ▶ diabetes
- ▶ immune system
- ▶ cardiovascular
- ▶ liver
- ▶ hyperglycemia

Journal of Endocrinology
(2018) **238**, R1–R11

Introduction

Coronary artery disease (CAD) has been the leading cause of death worldwide for the last few decades except in the very low-income group population (World Health Organisation 2017). Atherothrombosis and atherosclerosis are the pathologic basis for CAD and are widely appreciated to be multifactorial diseases with predominant factors of elevated lipid levels and chronic inflammation (Woollard & Geissmann 2010, Weber & Noels 2011). Emphasizing the role of lipids, statins have been the gold standard for treating CAD, and a large number of randomized

controlled statin trials have confirmed their beneficial effects in various patient groups of CAD (Pedersen 2016). However, in the last three decades, evidence from experimental and clinical studies has also lent support to the inflammatory hypothesis in the pathogenesis of atherosclerotic disease in conjunction with or beyond elevated lipid levels (reviewed by Libby 2012). The recent results of the CANTOS trial (Canakinumab Anti-Inflammatory Thrombosis Outcome Study) showed clinical evidence that controlling vascular inflammation

independently of lipid lowering could lower the rates of recurrent cardiovascular events in a large Phase 3 trial (Ridker *et al.* 2017). Inflammatory signals likely cause plaque instability, which could result in plaque rupture, fissuring or erosion leading to a thrombotic response that causes myocardial infarction/ischemia (MI). However, strictly anti-inflammatory drugs have never been used alone to treat patients with CAD.

Elevated leukocyte count has been correlated with cardiovascular disease since the 1920s (Madjid *et al.* 2004). The myeloid compartment of the white blood cells (WBCs), namely, monocytes (Choi *et al.* 2017), neutrophils (Wheeler *et al.* 2004, Tan *et al.* 2015) and platelets (Huo *et al.* 2003), are the predominant players in driving this association and have all been causally implicated in influencing CAD initiation or progression and impairing the regression of atheromatous plaques. In this context, it is not surprising to note that aspirin, by virtue of its inhibition of platelet aggregation by blocking thromboxane A2 formation, has been used for several decades as the gold standard in secondary prevention of CAD (Antiplatelet Trialists' Collaboration 1994).

Here, we review the common theme of myelopoiesis and more specifically, megakaryopoiesis, in driving the pathogenesis of CAD. We will examine the different pathways that promote the production of platelets, with an emphasis on reticulated platelets and the role of the liver in regulating megakaryopoiesis and thrombopoiesis.

Cardiovascular risk factor contribution to myelopoiesis

As stated earlier, monocyte levels are associated with CAD. However, different metabolic risk factors for CAD seem to promote the production of monocytes through varying mechanisms. While these risk factors act through independent pathways, it is important to note that these risk factors typically cluster together in metabolic diseases such as diabetes and metabolic syndrome to promote an exacerbated myelopoietic phenotype. The mechanisms of each of these risk factors in relation to myeloid-driven CAD are summarized in Fig. 1 (modified from Murphy & Tall 2016) and detailed below.

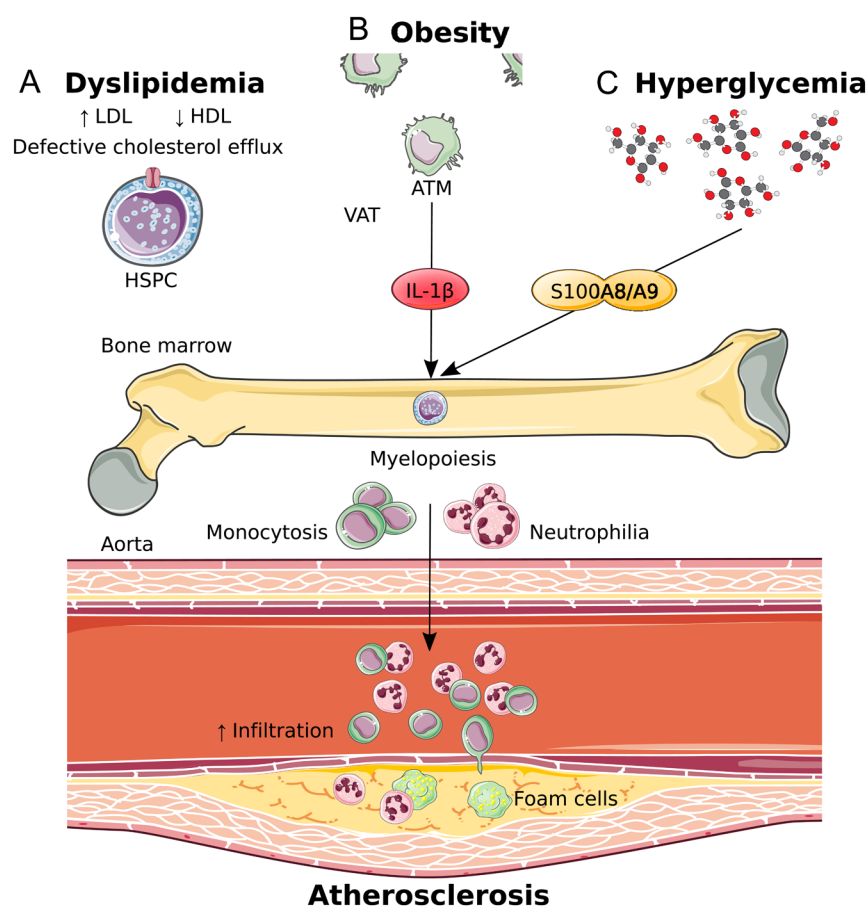


Figure 1

Cardiovascular risk factors promote myelopoiesis and accelerate atherosclerosis. (A) Dyslipidemia in the form of increased LDL and decreased HDL directly promotes HSPC differentiation via impaired cholesterol efflux in these cells. (B) Obesity indirectly promotes myelopoiesis by stimulating IL-1 β production from ATM in VAT. (C) Hyperglycemia induces an upregulation in S100A8/A9 that travels to BM to stimulate myelopoiesis. ATM, adipose tissue macrophages; BM, bone marrow; HSPC, hematopoietic stem and progenitor cell; VAT, visceral adipose tissue.

Dyslipidemia

Dyslipidemia refers to abnormal amounts of lipids in the blood and is a central component of both diabetes and metabolic syndrome, typically presenting as hyperlipidemia with an increase in triglycerides and LDL cholesterol with a reduction in HDL cholesterol. In the context of dyslipidemia, lipid metabolism and cholesterol efflux are important regulators of myeloid cell production. The importance of lipids in regulating bone marrow (BM) hematopoietic stem and progenitor cell (HSPC) proliferation was originally discovered through the use of genetically deficient models of key cholesterol efflux genes, including ABCA1 and ABCG1, (ATP-binding cassette (ABC) transporters, belonging to a family of highly conserved cellular transmembrane proteins) as well as their cell-intrinsic ligand apolipoprotein E. Deletion of these genes resulted in cholesterol accumulation, enhanced proliferation and over production of monocytes and neutrophils (Yvan-Charvet *et al.* 2010, Murphy *et al.* 2011) (Fig. 1A). Importantly, this phenotype could be reversed by increasing HDL levels to promote cholesterol efflux through either genetic or pharmacological approaches. It was also revealed that concurrently increasing LDL levels and reducing HDL levels using a genetic approach further influenced the proliferation of HSPCs resulting in enhanced monocytosis and accelerated atherosclerosis (Tolani *et al.* 2013). Thus, regulating HSPC cholesterol content is important in maintaining normal hematopoiesis to prevent the overproduction of myeloid cells that exacerbate atherosclerosis in the presence of dyslipidemia.

Obesity

Obesity is known as a low-grade inflammatory disorder with a heavy macrophage burden of the adipose tissue (Weisberg *et al.* 2003). This discovery brought forward the hypothesis that signals emanating from this organ could have detrimental effects on the health of other organs around the body. This was recently demonstrated in the liver, where obese adipose tissue drove hepatic neutrophil recruitment (Bijnen *et al.* 2017). Similarly, seeding of monocytes in the visceral adipose tissue (VAT) was shown to involve a regulatory feed-forward loop where inflamed VAT can signal to BM hematopoietic progenitor cells to proliferate, expand and increase the production of myeloid cells (Nagareddy *et al.* 2014) (Fig. 1B). Specifically, we discovered that upregulation of S100A8/A9 in the VAT,

signal adipose tissue macrophages (ATMs) to induce the expression of Pro-IL-1 β and the Nlrp3 inflammasome. Activation of the Nlrp3 inflammasome by a second signal (yet to be clearly defined) results in the processing of Pro-IL-1 β to form mature IL-1 β , which then travels to the BM to induce the proliferation of hematopoietic progenitor cells (common myeloid progenitors (CMPs) and granulocyte macrophage progenitors (GMPs)) resulting in monocytosis and neutrophilia (Nagareddy *et al.* 2014). The excess number of monocytes in the circulation gives rise to more ATMs which in turn trigger further adipose inflammation completing the loop and also promote insulin resistance. Given the positive outcome, albeit small, in reducing cardiovascular events in the CANTOS trial, alongside the remaining controversy over the explicit role of IL-1 β in the general pathogenesis of atherosclerosis (Duell *et al.* 2010, Menu *et al.* 2011, Ridker *et al.* 2017), it will be of specific interest to determine whether those of greatest benefit with IL-1 β -targeted therapies are the obese individuals, particularly those with a recent cardiovascular event. Additionally, but beyond the scope of this review, another sub-group of patients that could benefit from IL-1 β -targeted therapies are those with clonal hematopoiesis of indeterminate potential, particularly those with TET-2 mutations (Fuster *et al.* 2017, Jaiswal *et al.* 2017) or patients with IL-1 β associated autoimmune disorders such as rheumatoid arthritis that is linked to accelerated CVD (Dragoljevic *et al.* 2018).

Hyperglycemia

It is well known that people with diabetes have elevated WBC counts (Schmidt *et al.* 1999, Ford 2002, Vuckovic *et al.* 2007, Woo *et al.* 2011). Modeling this in mice, we discovered that hyperglycemia promotes myelopoiesis by increasing the release of S100A8/A9 from neutrophils, which then interacts with the glucose-inducible receptor for advanced glycation end-products (RAGE) on CMPs, resulting in the production of inflammatory Ly6-C^{hi} monocytes. The importance of this finding was that the increased production of Ly6-C^{hi} monocytes contribute to persistent entry into the atherosclerotic lesion, impairing lesion regression as previously documented (even when cholesterol levels were effectively lowered) (Fig. 1C) (Nagareddy *et al.* 2013). Impaired lesion regression has also been observed in people with diabetes, even though LDL levels were lowered equally by statin treatment in comparison to people without diabetes (Hiro *et al.* 2010) and modeled

in mice (Parathath *et al.* 2011). In the pre-clinical models, we found that this myelopoietic defect could be reversed by administration of an sodium-glucose cotransporter 2 inhibitor (SGLT2i), and given the recent success of this class of drugs in reducing cardiovascular events in people with diabetes (Nagareddy *et al.* 2013), it will be important to explore if the reduction is due to a dampening in the production of myeloid cells. Interestingly, dysregulated cholesterol metabolism has also been alluded to in the setting of diabetes (Passarelli *et al.* 2005, Mauldin *et al.* 2008), and silencing miR33, a negative regulator of ABCA1, can suppress myeloid cells in the setting of diabetes (Distel *et al.* 2014). Therefore, it would also be interesting to determine if elevating HDL could reverse enhanced myelopoiesis in diabetes, with benefits that extend to the vasculature.

Platelets and atherosclerosis

Apart from the intrinsic thrombotic tendency of platelets, platelet biogenesis plays an important role in atherogenesis due to two main reasons. First, more activated platelets are found in the circulation of patients with CAD (Fitzgerald *et al.* 1986, Schapiro *et al.* 1990), hypercholesterolemia (Broijersen *et al.* 1998) and diabetes (Grove *et al.* 2011), which are prone to bind leukocytes, preferentially monocytes, to form platelet–leukocyte aggregates (Rinder *et al.* 1992, Furman *et al.* 1998) required for thrombus evolution. The enhanced platelet production also causes an increase in immature or reticulated platelets, which is invariably linked to accelerated atherogenesis (Murphy *et al.* 2013). Secondly, activated platelets can produce chemokines to exacerbate atherogenesis. For example, platelet CD40L (Henn *et al.* 1998) and IL-1 β (Hawrylowicz *et al.* 1991) can activate endothelial cells or platelets can deposit chemokines including platelet factor-4 (PF4/CXCL4) and RANTES (CCL5), which can trigger monocyte arrest on inflamed endothelium (von Hundelshausen *et al.* 2001). It should be noted that antiplatelet therapy can reduce CVD risk in non-diabetic subjects (Antiplatelet Trialists' Collaboration 1994); however, such therapies are less effective in the context of diabetes, potentially due to an increase in reticulated platelets that are somewhat resistant to standard antiplatelet therapies (Guthikonda *et al.* 2007), possibly due to their ability to re-synthesize cyclooxygenase (COX)-1 and COX-2. This is because reticulated platelets, unlike matured platelets carry residual mRNA that may help replenish COX enzymes (Angénioux *et al.* 2016).

Reticulated platelets and aspirin resistance

Antiplatelet drugs decrease platelet aggregation and prevent thrombus formation, even in the arterial circulation where anticoagulants are generally ineffective. The major classes of antiplatelet drugs are irreversible COX inhibitors such as aspirin and ADP receptor inhibitors (e.g. clopidogrel). However, in the last couple of decades, inter-individual variability of platelet inhibition by antiplatelet therapies of aspirin and clopidogrel has been observed. As early as 2003, Gurbel *et al.* showed that the platelet inhibitory response from clopidogrel varied enormously and that patients undergoing elective coronary stenting were least protected when their *ex vivo* platelet reactivity was high to begin with (Gurbel *et al.* 2003, Vlachojannis *et al.* 2011). Similarly, inter-individual variability of platelet reactivity with aspirin has been termed aspirin resistance. Aspirin inhibits platelet activation by irreversible acetylation of platelet COX-1, thereby preventing the formation of thromboxane A₂. Even though the half-life of aspirin is minutes, COX-1 modification by aspirin is sufficient for platelet inhibition for up to 24 h as platelets are anucleate and, due to mRNA degradation, mature platelets lack sufficient mRNA required to replenish COX-1 protein (Patrono *et al.* 2005, Angénioux *et al.* 2016). It has been estimated that with low-dose aspirin, COX-1 activity is restored at a rate of 10% per day reflecting the 10-day lifespan of platelets, where 10% of the platelets are newly formed and not exposed to aspirin (Eikelboom & Warkentin 2014). Even though part of the inter-individual variability of platelet inhibition can be attributed to inherent variations in *ex vivo* measurements and polymorphisms of cytochrome P450 2C19 (Shuldiner *et al.* 2009), it is now well-accepted that new platelet generation plays a significant mechanistic role. Like increased reticulocyte (immature erythrocyte) count use as a marker for enhanced erythropoiesis, immature platelet counts (IPCs) and reticulated platelet fractions (RPFs) have emerged as a marker for increased thrombopoiesis. Immature or reticulated platelets are larger, metabolically more active and have a higher thrombotic potential than mature platelets (Brown & Martin 1994). Although the terms 'reticulated platelets' and 'immature platelets' are used interchangeably, reticulated platelets are detected by flow cytometry with thiazole orange staining of the high RNA content in a reticulated pattern (hence the name 'reticulated platelets') (Kienast & Schmitz 1990), while 'immature' platelets are detected on automated cell counters with an add-on module allowing platelets to be stained with a polyamine/oxazine combination

(to detect RNA). Therefore, it should be noted that reticulated platelets and immature platelets do not represent necessarily identical populations even though there is a considerable overlap (Ibrahim *et al.* 2016).

Reticulated platelet count has been strongly associated with aspirin resistance, especially with short-lived antiplatelet therapies as they can re-synthesize COX-1/2 (Guthikonda *et al.* 2007, 2008, Armstrong *et al.* 2017). However, IPC has emerged as the strongest independent platelet count-derived predictor of antiplatelet response (Stratz *et al.* 2016). In a prospective study of 93 subjects with a median follow-up of 31 months, IPC has also been associated with major adverse cardiovascular events (MACEs), defined as a composite of death, MI, unplanned revascularization or recurrent angina (Ibrahim *et al.* 2014). RPF as an index of platelet turnover has also been shown to be an independent predictor of MACE (Freynhofer *et al.* 2017). Thrombi generated in a perfusion chamber with whole blood from normal donors under shear conditions equivalent to a significant coronary artery stenosis, revealed that younger 'reticulated' platelets had greater propensity for thrombus participation compared to older and mature platelets (McBane *et al.* 2014).

Diabetes is associated with a higher number of clopidogrel non-responders and increased platelet reactivity on combined aspirin and clopidogrel treatment (Angiolillo *et al.* 2005). Moreover, patients with DM but without any history of coronary event such as MI carry the same level of risk as a non-diabetic MI patient for subsequent acute coronary events (Schramm *et al.* 2008). Significantly higher mean platelet volume (MPV), which is also a risk factor for MACE (Mayer *et al.* 2014), was seen in diabetic patients compared to non-diabetic controls, suggesting a platelet dependent role in the macrovascular complications of diabetes (Hekimsoy *et al.* 2004). Not surprisingly, diabetic patients with CAD have significantly higher MPV values compared to control subjects (Tavil *et al.* 2010). Hence, diabetic patients exhibit a prothrombotic milieu with reticulated and hyperreactive platelets, and a consistently impaired response to antiplatelet therapy (reviewed by Neergaard-Petersen *et al.* 2016).

Megakaryopoiesis and its regulation by the liver

Platelets are produced through the myelopoietic pathway in the BM, specifically through the differentiation of hematopoietic stem cells through to megakaryocyte-

erythroid progenitors (MEPs), then megakaryocyte progenitors (MkPs) and megakaryocytes before undergoing thrombopoiesis to form platelets. The primary cytokine regulator of megakaryopoiesis is thrombopoietin (TPO), which is constitutively produced by hepatocytes in the liver and to a lesser degree by proximal tubule cells in the kidney (Sungaran *et al.* 1997, Qian *et al.* 1998). TPO acts via its receptor, the cellular homologue of the myeloproliferative leukemia virus oncogene (c-MPL) on platelets and BM progenitor cells (de Sauvage *et al.* 1994, Kuter *et al.* 1994). Clearance of senescent desialylated platelets in the liver via the Ashwell–Morell receptor (AMR) induces STAT-3-mediated production of TPO in hepatocytes (Hoffmeister *et al.* 2014). When circulating platelets are low, plasma TPO levels increase and promote thrombopoiesis by binding to MEPs, MkPs and megakaryocytes. Mice lacking TPO or MPL are severely thrombocytopenic and deficient in megakaryocytes and their progenitor cells (Gurney *et al.* 1994, Kaushansky 1995), a phenotype consistent with a role for TPO in maintaining appropriate megakaryocyte numbers *in vivo*. Platelet mass contains the highest concentration of c-MPL receptor and MPL-receptor-mediated internalization and degradation through ubiquitination regulates systemic TPO levels (Saur *et al.* 2010). After the platelets are released into the circulation, they act as a sink, binding to c-MPL and degrading TPO, which decreases platelet production (Saur *et al.* 2010). This feedback system effectively regulates TPO-driven platelet production in normal physiological conditions. The reciprocal relationship between platelet number (aka 'MPL mass') and circulating TPO levels may be an effective feedback loop during normal, but not in inflammatory conditions. For example, cytokines such as IL-6 and IL-1 α can stimulate thrombopoiesis independent of platelet number or "MPL mass", indicating that the number of platelets by themselves is not the sole determinant of circulating TPO levels and thus of thrombopoiesis (Gurney *et al.* 1994, Broudy *et al.* 1995, Saur *et al.* 2010). During acute inflammation, TPO levels rise and a positive correlation is seen between the concentrations of circulating IL-6 and TPO (Hsu *et al.* 1999, Ishiguro *et al.* 2002). In fact, IL-6 has been shown to act directly on hepatocytes via the IL-6R to induce TPO expression, which is mediated by gp130-JAK1 activation of STAT3 independent to classical signaling via the hepatic AMR (Kaser *et al.* 2001, Hoffmeister *et al.* 2014). Systemic TPO levels have been shown to be increased in diabetes and are associated with glycemia, insulinemia and adiposity (Maury *et al.* 2010). Likewise, IL-6 is elevated in diabetes and metabolic syndrome and

plays an important role in glucose metabolism, notably reducing hepatocyte insulin sensitivity (Pickup *et al.* 1997, Kristiansen & Mandrup-Poulsen 2005). In the liver, IL-6 expression by Kupffer cells is increased in diabetes (Kraakman *et al.* 2017), and this cytokine may play an important role in diabetes-induced thrombopoiesis. In contrast to the increased thrombopoiesis observed during inflammation, impaired liver function in patients with liver cirrhosis (LC) (Afdhal *et al.* 2008) and in hepatitis B virus (HBV)-related liver disease (Wang *et al.* 2014a) is associated with 76% incidence of thrombocytopenia. The prevalence of cirrhosis as an etiology of thrombocytopenia of unknown origin in patients undergoing BM biopsies is as high as 35% (Sheikh *et al.* 2012). LC patients typically present with decreased plasma TPO, decreased platelet production as well as accelerated platelet destruction (Pradella *et al.* 2011). Further, confirming the role of liver in thrombopoiesis, orthotopic liver transplantation in patients with LC induces platelet recovery through an increase in systemic TPO levels (Peck-Radosavljevic *et al.* 2000).

Cardiovascular risk factor contribution to megakaryopoiesis

Dyslipidemia

As is the case in diabetes, patients identified as hyperlipidemic also exhibit increased platelet activation (Podrez *et al.* 2007, Vergeer *et al.* 2011), higher platelet counts and increased MPV (Grove *et al.* 2011) indicating that dyslipidemia may play a direct role in platelet production and/or function and contribute to diabetes-associated thrombocytosis. For example, deficiency of ATP-binding cassette transporter B6 (ABCB6) and cholesterol transporter ABCG4, which promote cholesterol efflux to HDL in MkPs, can both lead to expansion and proliferation of MkPs (Murphy *et al.* 2013, 2014) (Fig. 2A). ABCB6 is restricted to MEPs (Murphy *et al.* 2014) while ABCG4 has been shown to be highly expressed in BM MkPs (Murphy *et al.* 2013). Enhanced megakaryopoiesis in the absence of ABCB6 was accompanied by increased platelet counts, MPV and platelet activity together with

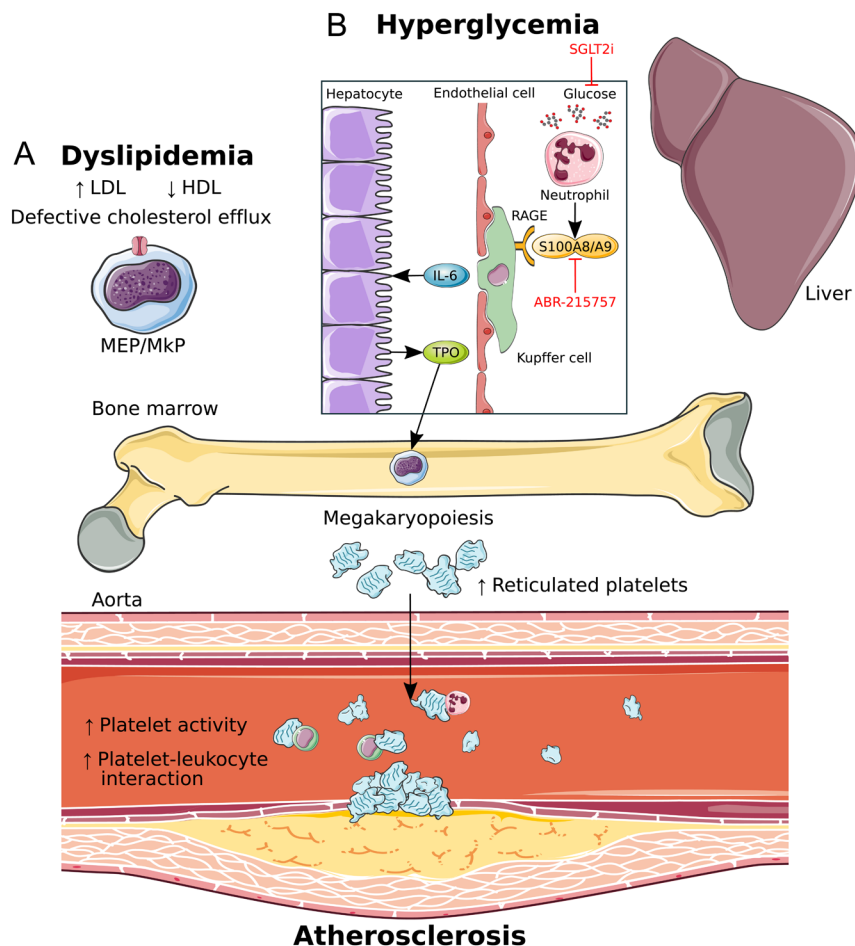


Figure 2

Cardiovascular risk factors drive reticulated thrombopoiesis and accelerate atherosclerosis via enhanced megakaryopoiesis. (A) Dyslipidemia in the form of increased LDL and decreased HDL along with defective cholesterol efflux promotes proliferation and differentiation of MEPs and MkPs. (B) Hyperglycemia-induced S100A8/A9 from neutrophils stimulates megakaryopoiesis and promotes atherosclerosis via enhanced liver inflammation. Binding of S100A8/A9 to RAGE on Kupffer cells in the liver stimulates IL-6 production leading to TPO production from hepatocytes that travels to BM to promote megakaryopoiesis. Reticulated thrombocytosis resulting from enhanced megakaryopoiesis in both dyslipidemia and hyperglycemia leads to increased platelet activity, platelet-leukocyte interactions and accelerated atherosclerosis. Lowering blood glucose using SGLT2i, dapagliflozin, as well as blocking S100A8/A9 binding to RAGE, prevents hyperglycemia-induced thrombocytosis and atherosclerosis. MEPs, megakaryocyte-erythroid progenitors; MkPs, megakaryocyte progenitors; RAGE, receptor for advanced glycation end-products; SGLT2i, sodium-glucose cotransporter 2 inhibitor; TPO, thrombopoietin.

increased platelet–leukocyte aggregates and accelerated atherosclerosis (Murphy *et al.* 2014). In the absence of ABCG4, MkPs showed defective cholesterol efflux to HDL, increased cell surface expression of the TPO receptor, c-MPL, followed by enhanced proliferation and megakaryopoiesis (Nagareddy *et al.* 2013). Mechanistically, disruption of negative feedback regulation of c-MPL signaling by the E3 ligase c-CBL and the cholesterol-sensing LYN kinase was implicated. Interestingly, infusions of reconstituted HDL could reverse this phenotype in an ABCG4-dependent fashion. It is pertinent to note that people with myeloproliferative neoplasms like essential thrombocytosis and polycythemia vera, often die of atherothrombotic disease (Murphy & Tall 2016). However, the mechanism of enhanced thrombocytosis in these patients is due to cell-intrinsic mutations in MkPs and other BM progenitors resulting in uncontrolled proliferation (Maugeri *et al.* 2011), which is different from megakaryopoiesis associated with CAD risk factors where the culprits are usually extrinsic. In the case of altered lipid levels, this extrinsic mediator is the abnormal cholesterol efflux in hematopoietic progenitors. In addition, while cholesterol handling of stem and progenitor cells in the BM plays an important role in regulating myelopoiesis and alterations in MkP cholesterol efflux leads to enhanced megakaryopoiesis, it is also possible that more global effects of dyslipidemia, particularly in the liver, may contribute to lipid-induced megakaryopoiesis.

Hyperglycemia

The residual risk of CVD in diabetes despite lipid lowering, as described earlier, implies that there are major gaps in our understanding of the underlying mechanisms responsible for increased CVD in diabetes. In our recent study, we unraveled a novel link between hyperglycemia and enhanced platelet production and reactivity (Kraakman *et al.* 2017). We found that diabetic mice had significantly higher production of reticulated platelets through overall expansion of BM progenitor populations, specifically, CMPs, MEPs and MkPs (Fig. 2B). This appeared to be driven by TPO originating from the liver, as IL-6-driven liver inflammation was evident. Transplantation of IL-6-knockout BM followed by injection of streptozotocin (STZ) led to normalized levels of reticulated platelets and BM MkPs without any decrease in liver Kupffer cell numbers. This implied that IL-6 downstream of Kupffer cells is the key mediator of diabetes-associated thrombocytosis through induction of TPO (Kraakman *et al.* 2017). In a cohort of diabetic patients, increased plasma levels of TPO were also

observed, similar to our pre-clinical model (Grove *et al.* 2011, Kraakman *et al.* 2017). Through a series of bone marrow transplant (BMT) studies using BM from different genetic deficient models, we found that neutrophil-derived S100A8/A9, binding to the RAGE on the Kupffer cells from diabetic mice caused increases in Kupffer cell abundance and IL-6 expression, consistent with the increased inflammatory tone of the liver. Furthermore, S100a9^{-/-} mice or hematopoietic deletion of S100A9 through BMTs also protected mice from diabetes-induced thrombocytosis confirming that the source of the ligands was hematopoietic cells. Independent of hyperglycemia, S100A8/A9 is also known to contribute to the biological response by promoting leukocyte recruitment in vascular injury and regulate thrombosis (Croce *et al.* 2009, Wang *et al.* 2014b).

Neutrophils are the predominant source of the serum S100A8/A9 (Nagareddy *et al.* 2013) and neutrophil depletion using an anti-Ly6-G antibody in diabetic mice caused significant lowering of circulating platelets and BM MEPs. Increased serum S100A8/A9 is a biomarker for chronic inflammatory disorders and localizes to sites of infection or sterile injury (Pruenster *et al.* 2016). Does this imply that neutrophils are sensors of hyperglycemia? Indeed, neutrophil depletion studies decrease the levels of S100A8/A9. It is interesting to note that leukocytes have differential glycolytic and oxidative metabolic profiles where lymphocytes primarily rely on oxidative phosphorylation to metabolize glucose, while neutrophils are almost entirely glycolytic with platelets and monocytes being relatively intermediate (Kramer *et al.* 2014). S100A8/A9 levels were increased in a cohort of individuals with type 1 diabetes (T1D) with complications (Nagareddy *et al.* 2013) and similar to results in mice, type 2 diabetes mellitus (T2DM) patients had a significant increase in the abundance of reticulated platelets that correlates with glycated hemoglobin as well as increased plasma S100A8/A9 levels. Our studies have identified two potential therapeutic strategies: (1) mice treated with SGLT2i, dapagliflozin, lowered blood glucose concomitantly with reduced number of reticulated platelets; (2) STZ-treated mice ameliorated their diabetes-induced athero-progression with S100A9 inhibitor ABR-215757. Not surprisingly, in the EMPA-REG OUTCOME trial a SGLT2i, empagliflozin, reduced cardiovascular morbidity and mortality in patients with T2DM and established cardiovascular disease (Wanner *et al.* 2018). It would be interesting to see the effect of S100A8/A9 targeting small-molecule inhibitor ABR-215757 (Paquinimod) in diabetic patients, which has already

been shown to have fewer side effects and encouraging pharmacokinetics in a dose-ranging study with cohorts of systemic lupus erythematosus (SLE) patients (Bengtsson *et al.* 2012).

Conclusions

Diabetes is associated with enhanced atherosclerosis and atherothrombosis, which is resistant to antiplatelet therapies. Liver inflammation in diabetes as well as impaired cholesterol efflux in the platelet-lineage progenitor cells promotes megakaryopoiesis and leads to reticulated thrombopoiesis, generating new platelets uninhibited by antiplatelet drugs, increasing platelet activity and accelerating atherosclerosis. S100A8/A9 from neutrophils induced by hyperglycemia promotes this liver inflammation, resulting in the IL-6-mediated production of the megakaryopoiesis-inducing factor, TPO, in the liver. S100A8/A9 also both directly and indirectly promotes the production of monocytes and neutrophils through enhanced myelopoiesis in the context of hyperglycemia and obesity. Moreover, dyslipidemia and impaired cholesterol efflux in the stem and progenitor cells upstream of monocytes and neutrophils also contributes to enhanced myelopoiesis and accelerates atherosclerosis. Given the cumulative effects of these risk factors underlying CVD in promoting thrombocytosis and in generating reticulated platelets resistant to antiplatelet drugs such as aspirin, it is unsurprising that current therapies for thrombocytosis often fail to achieve effective platelet inhibition. This is particularly evident in patients with diabetes, resulting in persistent high platelet reactivity, which is associated with an increased risk of cardiovascular events. Targeting platelet production along with mature platelet reactivity may provide a more effective and reliable approach to reducing thrombocytosis associated with metabolic disease. Moreover, while the potential additive or synergistic effects of inhibiting S100A8/A9 alongside lipid lowering to inhibit thrombocytosis is yet to be explored, these data suggest that combined targeting of these pathways could be beneficial in lowering platelet activity as well as monocyte and neutrophil levels in patients with metabolic diseases and have the overall potential to reduce CVD in these 'at-risk' patients.

Declaration of interest

The authors declare that there is no conflict of interest that could be perceived as influencing the objectivity of this review.

Funding

P R N was supported by grants from the NIH (R01HL1379 and R00HL1225). A J M was supported by a Career Development Fellowship from the NHMRC (APP1085752), a Future Leader Fellowship from the National Heart Foundation (100440) and a Centenary Award from CSL.

References

- Afdhal N, McHutchison J, Brown R, Jacobson I, Manns M, Poordad F, Weksler B & Esteban R 2008 Thrombocytopenia associated with chronic liver disease. *Journal of Hepatology* **48** 1000–1007. (<https://doi.org/10.1016/j.jhep.2008.03.009>)
- Angélieux C, Maître B, Eckly A, Lanza F, Gachet C & de la Salle H 2016 Time-dependent decay of mRNA and ribosomal RNA during platelet aging and its correlation with translation activity. *PLoS ONE* **11** e0148064. (<https://doi.org/10.1371/journal.pone.0148064>)
- Angiolillo DJ, Fernandez-Ortiz A, Bernardo E, Ramirez C, Sabate M, Jimenez-Quevedo P, Hernandez R, Moreno R, Escaned J, Alfonso F, *et al.* 2005 Platelet function profiles in patients with type 2 diabetes and coronary artery disease on combined aspirin and clopidogrel treatment. *Diabetes* **54** 2430–2435. (<https://doi.org/10.2337/diabetes.54.8.2430>)
- Antiplatelet Trialists' Collaboration 1994 Collaborative overview of randomised trials of antiplatelet therapy-III: reduction in venous thrombosis and pulmonary embolism by antiplatelet prophylaxis among surgical and medical. *BMJ* **308** 235.
- Armstrong PC, Hofer T, Knowles RB, Tucker AT, Hayman MA, Ferreira PM, Chan MV & Warner TD 2017 Newly formed reticulated platelets undermine pharmacokinetically short-lived antiplatelet therapies. *Arteriosclerosis, Thrombosis, and Vascular Biology* **37** 949–956. (<https://doi.org/10.1161/ATVBAHA.116.308763>)
- Bengtsson AA, Sturfelt G, Lood C, Ronnblom L, van Vollenhoven RF, Axelsson B, Sparre B, Tuveesson H, Ohman MW & Leanderson T 2012 Pharmacokinetics, tolerability, and preliminary efficacy of paquinimod (ABR-215757), a new quinoline-3-carboxamide derivative: studies in lupus-prone mice and a multicenter, randomized, double-blind, placebo-controlled, repeat-dose, dose-ranging study in patients with systemic lupus erythematosus. *Arthritis and Rheumatism* **64** 1579–1588. (<https://doi.org/10.1002/art.33493>)
- Bijnen M, Josefs T, Cuijpers I, Maalsen CJ, van de Gaar J, Vroomen M, Wijnands E, Rensen SS, Greve JWM & Hofker MH 2017 Adipose tissue macrophages induce hepatic neutrophil recruitment and macrophage accumulation in mice. *Gut* [epub]. (<https://doi.org/10.1136/gutjnl-2016-313654>)
- Broijers A, Hamsten A, Eriksson M, Angelin B & Hjendahl P 1998 Platelet activity in vivo in hyperlipoproteinemia – importance of combined hyperlipidemia. *Thrombosis and Haemostasis* **79** 268–275. (<https://doi.org/10.1055/s-0037-1615005>)
- Broudy VC, Lin NL & Kaushansky K 1995 Thrombopoietin (c-mpl ligand) acts synergistically with erythropoietin, stem cell factor, and interleukin-11 to enhance murine megakaryocyte colony growth and increases megakaryocyte ploidy in vitro. *Blood* **85** 1719–1726.
- Brown AS & Martin JF 1994 The megakaryocyte platelet system and vascular disease. *European Journal of Clinical Investigation* **24** (Supplement 1) 9–15. (<https://doi.org/10.1111/j.1365-2362.1994.tb02419.x>)
- Choi SH, Kim JH, Lim S, Lim JY, Kim KW, Park KS & Jang HC 2017 Monocyte count as a predictor of cardiovascular mortality in older Korean people. *Age Ageing* **46** 433–438. (<https://doi.org/10.1093/ageing/afw226>)
- Croce K, Gao H, Wang Y, Mooroka T, Sakuma M, Shi C, Sukhova GK, Packard RR, Hogg N & Libby P 2009 Myeloid-related protein-8/14 is critical for the biological response to vascular injury. *Circulation* **120** 427–436. (<https://doi.org/10.1161/CIRCULATIONAHA.108.814582>)

- de Sauvage FJ, Hass PE, Spencer SD, Malloy BE, Gurney AL, Spencer SA, Darbonne WC, Henzel WJ, Wong SC, Kuang WJ, *et al.* 1994 Stimulation of megakaryocytopoiesis and thrombopoiesis by the c-Mpl ligand. *Nature* **369** 533–538. (<https://doi.org/10.1038/369533a0>)
- Distel E, Barrett TJ, Chung K, Giris NM, Parathath S, Essau CC, Murphy AJ, Moore KJ & Fisher EA 2014 miR33 inhibition overcomes deleterious effects of diabetes mellitus on atherosclerosis plaque regression in mice. *Circulation Research* **115** 759–769. (<https://doi.org/10.1161/CIRCRESAHA.115.304164>)
- Dragoljevic D, Kraakman MJ, Nagareddy PR, Ngo D, Shihata W, Kammoun HL, Whillas A, Lee MKS, Al-Sharea A & Pernes G 2018 Defective cholesterol metabolism in haematopoietic stem cells promotes monocyte-driven atherosclerosis in rheumatoid arthritis. *European Heart Journal* [epub]. (<https://doi.org/10.1093/eurheartj/ehy119>)
- Duewell P, Kono H, Rayner KJ, Sirois CM, Vladimer G, Bauernfeind FG, Abela GS, Franchi L, Nunez G, Schnurr M, *et al.* 2010 NLRP3 inflammasomes are required for atherogenesis and activated by cholesterol crystals. *Nature* **464** 1357–1361. (<https://doi.org/10.1038/nature08938>)
- Eikelboom JW & Warkentin TE 2014 Immature platelet count: part of the cardiologist's complete blood count? *Journal of the American College of Cardiology* **64** 2130–2132. (<https://doi.org/10.1016/j.jacc.2014.09.014>)
- Fitzgerald DJ, Roy L, Catella F & FitzGerald GA 1986 Platelet activation in unstable coronary disease. *New England Journal of Medicine* **315** 983–989. (<https://doi.org/10.1056/NEJM198610163151602>)
- Ford ES 2002 Leukocyte count, erythrocyte sedimentation rate, and diabetes incidence in a national sample of US adults. *American Journal of Epidemiology* **155** 57–64. (<https://doi.org/10.1093/aje/155.1.57>)
- Freyenhofer MK, Iliev L, Bruno V, Rohla M, Egger F, Weiss TW, Hubl W, Willheim M, Wojta J & Huber K 2017 Platelet turnover predicts outcome after coronary intervention. *Thrombosis and Haemostasis* **117** 923–933. (<https://doi.org/10.1160/TH16-10-0785>)
- Furman MI, Benoit SE, Barnard MR, Valeri CR, Borbone ML, Becker RC, Hechtman HB & Michelson AD 1998 Increased platelet reactivity and circulating monocyte-platelet aggregates in patients with stable coronary artery disease. *Journal of the American College of Cardiology* **31** 352–358. ([https://doi.org/10.1016/S0735-1097\(97\)00510-X](https://doi.org/10.1016/S0735-1097(97)00510-X))
- Fuster JJ, MacLauchlan S, Zuriaga MA, Polackal MN, Ostriker AC, Chakraborty R, Wu CL, Sano S, Muralidharan S, Rius C, *et al.* 2017 Clonal hematopoiesis associated with TET2 deficiency accelerates atherosclerosis development in mice. *Science* **355** 842–847. (<https://doi.org/10.1126/science.aag1381>)
- Grove EL, Hvas AM, Mortensen SB, Larsen SB & Kristensen SD 2011 Effect of platelet turnover on whole blood platelet aggregation in patients with coronary artery disease. *Journal of Thrombosis and Haemostasis* **9** 185–191. (<https://doi.org/10.1111/j.1538-7836.2010.04115.x>)
- Gurbel PA, Bliden KP, Hiatt BL & O'Connor CM 2003 Clopidogrel for coronary stenting: response variability, drug resistance, and the effect of pretreatment platelet reactivity. *Circulation* **107** 2908–2913. (<https://doi.org/10.1161/01.CIR.0000072771.11429.83>)
- Gurney AL, Carver-Moore K, de Sauvage FJ & Moore MW 1994 Thrombocytopenia in c-mpl-deficient mice. *Science* **265** 1445–1447. (<https://doi.org/10.1126/science.8073287>)
- Guthikonda S, Alviar CL, Vaduganathan M, Arikian M, Tellez A, DeLao T, Granada JF, Dong JF, Kleiman NS & Lev EI 2008 Role of reticulated platelets and platelet size heterogeneity on platelet activity after dual antiplatelet therapy with aspirin and clopidogrel in patients with stable coronary artery disease. *Journal of the American College of Cardiology* **52** 743–749. (<https://doi.org/10.1016/j.jacc.2008.05.031>)
- Guthikonda S, Lev EI, Patel R, DeLao T, Bergeron AL, Dong JF & Kleiman NS 2007 Reticulated platelets and uninhibited COX-1 and COX-2 decrease the antiplatelet effects of aspirin. *Journal of Thrombosis and Haemostasis* **5** 490–496. (<https://doi.org/10.1111/j.1538-7836.2007.02387.x>)
- Hawrylowicz CM, Howells GL & Feldmann M 1991 Platelet-derived interleukin 1 induces human endothelial adhesion molecule expression and cytokine production. *Journal of Experimental Medicine* **174** 785–790. (<https://doi.org/10.1084/jem.174.4.785>)
- Hekimsoy Z, Payzin B, Ornek T & Kandogan G 2004 Mean platelet volume in Type 2 diabetic patients. *Journal of Diabetes and its Complications* **18** 173–176. ([https://doi.org/10.1016/S1056-8727\(02\)00282-9](https://doi.org/10.1016/S1056-8727(02)00282-9))
- Henn V, Slupsky JR, Grafe M, Anagnostopoulos I, Forster R, Muller-Berghaus G & Kroczeck RA 1998 CD40 ligand on activated platelets triggers an inflammatory reaction of endothelial cells. *Nature* **391** 591–594. (<https://doi.org/10.1038/35393>)
- Hiro T, Kimura T, Morimoto T, Miyauchi K, Nakagawa Y, Yamagishi M, Ozaki Y, Kimura K, Saito S, Yamaguchi T, *et al.* 2010 Diabetes mellitus is a major negative determinant of coronary plaque regression during statin therapy in patients with acute coronary syndrome – serial intravascular ultrasound observations from the Japan Assessment of Pitavastatin and Atorvastatin in Acute Coronary Syndrome Trial (the JAPAN-ACS Trial). *Circulation Journal* **74** 1165–1174. (<https://doi.org/10.1253/circ.CJ-09-0766>)
- Hoffmeister KM, Falet H & Grozovsky R 2014 Platelets regulate thrombopoietin production: the missing link. *Blood* **124** SCI-52.
- Hsu HC, Tsai WH, Jiang ML, Ho CH, Hsu ML, Ho CK & Wang SY 1999 Circulating levels of thrombopoietin and inflammatory cytokines in patients with clonal and reactive thrombocytosis. *Journal of Laboratory and Clinical Medicine* **134** 392–397. ([https://doi.org/10.1016/S0022-2143\(99\)90154-3](https://doi.org/10.1016/S0022-2143(99)90154-3))
- Huo Y, Schober A, Forlow SB, Smith DF, Hyman MC, Jung S, Littman DR, Weber C & Ley K 2003 Circulating activated platelets exacerbate atherosclerosis in mice deficient in apolipoprotein E. *Nature Medicine* **9** 61–67. (<https://doi.org/10.1038/mm810>)
- Ibrahim H, Schutt RC, Hannawi B, DeLao T, Barker CM & Kleiman NS 2014 Association of immature platelets with adverse cardiovascular outcomes. *Journal of the American College of Cardiology* **64** 2122–2129. (<https://doi.org/10.1016/j.jacc.2014.06.1210>)
- Ibrahim H, Nadipalli S, Usmani S, DeLao T, Green L & Kleiman NS 2016 Detection and quantification of circulating immature platelets: agreement between flow cytometric and automated detection. *Journal of Thrombosis and Thrombolysis* **42** 77–83. (<https://doi.org/10.1007/s11239-016-1338-3>)
- Ishiguro A, Suzuki Y, Mito M, Shimbo T, Matsubara K, Kato T & Miyazaki H 2002 Elevation of serum thrombopoietin precedes thrombocytosis in acute infections. *British Journal of Haematology* **116** 612–618. (<https://doi.org/10.1046/j.0007-1048.2001.03304.x>)
- Jaiswal S, Natarajan P, Silver AJ, Gibson CJ, Bick AG, Shvartz E, McConkey M, Gupta N, Gabriel S, Ardissino D, *et al.* 2017 Clonal hematopoiesis and risk of atherosclerotic cardiovascular disease. *New England Journal of Medicine* **377** 111–121. (<https://doi.org/10.1056/NEJMoa1701719>)
- Kaser A, Brandacher G, Steurer W, Kaser S, Offner FA, Zoller H, Theurl I, Widder W, Molnar C, Ludwiczek O, *et al.* 2001 Interleukin-6 stimulates thrombopoiesis through thrombopoietin: role in inflammatory thrombocytosis. *Blood* **98** 2720–2725. (<https://doi.org/10.1182/blood.V98.9.2720>)
- Kaushansky K 1995 Thrombopoietin: the primary regulator of platelet production. *Blood* **86** 419–431.
- Kienast J & Schmitz G 1990 Flow cytometric analysis of thiazole orange uptake by platelets: a diagnostic aid in the evaluation of thrombocytopenic disorders. *Blood* **75** 116–121.
- Kraakman MJ, Lee MK, Al-Sharea A, Dragoljevic D, Barrett TJ, Montenont E, Basu D, Heywood S, Kammoun HL, Flynn M, *et al.* 2017 Neutrophil-derived S100 calcium-binding proteins A8/A9 promote reticulated thrombocytosis and atherogenesis in

- diabetes. *Journal of Clinical Investigation* **127** 2133–2147. (<https://doi.org/10.1172/JCI92450>)
- Kramer PA, Ravi S, Chacko B, Johnson MS & Darley-USmar VM 2014 A review of the mitochondrial and glycolytic metabolism in human platelets and leukocytes: implications for their use as bioenergetic biomarkers. *Redox Biology* **2** 206–210. (<https://doi.org/10.1016/j.redox.2013.12.026>)
- Kristiansen OP & Mandrup-Poulsen T 2005 Interleukin-6 and diabetes: the good, the bad, or the indifferent? *Diabetes* **54** S114–S124. (https://doi.org/10.2337/diabetes.54.suppl_2.S114)
- Kuter DJ, Beeler DL & Rosenberg RD 1994 The purification of megapoietin: a physiological regulator of megakaryocyte growth and platelet production. *PNAS* **91** 11104–11108. (<https://doi.org/10.1073/pnas.91.23.11104>)
- Libby P 2012 Inflammation in atherosclerosis. *Arteriosclerosis, Thrombosis, and Vascular Biology* **32** 2045–2051. (<https://doi.org/10.1161/ATVBAHA.108.179705>)
- Madjid M, Awan I, Willerson JT & Casscells SW 2004 Leukocyte count and coronary heart disease: implications for risk assessment. *Journal of the American College of Cardiology* **44** 1945–1956. (<https://doi.org/10.1016/j.jacc.2004.07.056>)
- Maugeri N, Malato S, Femia EA, Pugliano M, Campana L, Lunghi F, Rovere-Querini P, Lussana F, Podda G, Cattaneo M, *et al.* 2011 Clearance of circulating activated platelets in polycythemia vera and essential thrombocythemia. *Blood* **118** 3359–3366. (<https://doi.org/10.1182/blood-2011-02-337337>)
- Mauldin JP, Nagelin MH, Wojcik AJ, Srinivasan S, Skaflen MD, Ayers CR, McNamara CA & Hedrick CC 2008 Reduced expression of ATP-binding cassette transporter G1 increases cholesterol accumulation in macrophages of patients with type 2 diabetes mellitus. *Circulation* **117** 2785–2792. (<https://doi.org/10.1161/CIRCULATIONAHA.107.741314>)
- Maury E, Brichard SM, Pataky Z, Carpentier A, Golay A & Bobbioni-Harsch E 2010 Effect of obesity on growth-related oncogene factor- α , thrombopoietin, and tissue inhibitor metalloproteinase-1 serum levels. *Obesity* **18** 1503–1509. (<https://doi.org/10.1038/oby.2009.464>)
- Mayer FJ, Hoke M, Schillinger M, Minar E, Arbesu I, Koppensteiner R & Mannhalter C 2014 Mean platelet volume predicts outcome in patients with asymptomatic carotid artery disease. *European Journal of Clinical Investigation* **44** 22–28. (<https://doi.org/10.1111/eci.12184>)
- McBane RD 2nd, Gonzalez C, Hodge DO & Wysokinski WE 2014 Propensity for young reticulated platelet recruitment into arterial thrombi. *Journal of Thrombosis and Thrombolysis* **37** 148–154. (<https://doi.org/10.1007/s11239-013-0932-x>)
- Menu P, Pellegrin M, Aubert JF, Bouzourene K, Tardivel A, Mazzolai L & Tschopp J 2011 Atherosclerosis in ApoE-deficient mice progresses independently of the NLRP3 inflammasome. *Cell Death and Disease* **2** e137. (<https://doi.org/10.1038/cddis.2011.18>)
- Murphy AJ & Tall AR 2016 Disordered haematopoiesis and atherothrombosis. *European Heart Journal* **37** 1113–1121. (<https://doi.org/10.1093/eurheartj/ehv718>)
- Murphy AJ, Akhtari M, Tolani S, Pagler T, Bijl N, Kuo CL, Wang M, Sanson M, Abramowicz S, Welch C, *et al.* 2011 ApoE regulates hematopoietic stem cell proliferation, monocytosis, and monocyte accumulation in atherosclerotic lesions in mice. *Journal of Clinical Investigation* **121** 4138–4149. (<https://doi.org/10.1172/JCI57559>)
- Murphy AJ, Bijl N, Yvan-Charvet L, Welch CB, Bhagwat N, Reheman A, Wang Y, Shaw JA, Levine RL, Ni H, *et al.* 2013 Cholesterol efflux in megakaryocyte progenitors suppresses platelet production and thrombocytosis. *Nature Medicine* **19** 586–594. (<https://doi.org/10.1038/nm.3150>)
- Murphy AJ, Sarrazy V, Wang N, Bijl N, Abramowicz S, Westerterp M, Welch CB, Schuetz JD & Yvan-Charvet L 2014 Deficiency of ATP-binding cassette transporter B6 in megakaryocyte progenitors accelerates atherosclerosis in mice. *Arteriosclerosis, Thrombosis, and Vascular Biology* **34** 751–758. (<https://doi.org/10.1161/ATVBAHA.113.302613>)
- Nagareddy PR, Murphy AJ, Stirzaker RA, Hu Y, Yu S, Miller RG, Ramkhelawon B, Distel E, Westerterp M, Huang LS, *et al.* 2013 Hyperglycemia promotes myelopoiesis and impairs the resolution of atherosclerosis. *Cell Metabolism* **17** 695–708. (<https://doi.org/10.1016/j.cmet.2013.04.001>)
- Nagareddy PR, Kraakman M, Masters SL, Stirzaker RA, Gorman DJ, Grant RW, Dragoljevic D, Hong ES, Abdel-Latif A, Smyth SS, *et al.* 2014 Adipose tissue macrophages promote myelopoiesis and monocytosis in obesity. *Cell Metabolism* **19** 821–835. (<https://doi.org/10.1016/j.cmet.2014.03.029>)
- Neergaard-Petersen S, Hvas AM, Kristensen SD & Grove EL 2016 Platelets and antiplatelet therapy in patients with coronary artery disease and diabetes. *Seminars in Thrombosis and Hemostasis* **42** 234–241. (<https://doi.org/10.1055/s-0036-1571308>)
- Parathath S, Grauer L, Huang LS, Sanson M, Distel E, Goldberg JJ & Fisher EA 2011 Diabetes adversely affects macrophages during atherosclerotic plaque regression in mice. *Diabetes* **60** 1759–1769. (<https://doi.org/10.2337/db10-0778>)
- Passarelli M, Tang C, McDonald TO, O'Brien KD, Gerrity RG, Heinecke JW & Oram JF 2005 Advanced glycation end product precursors impair ABCA1-dependent cholesterol removal from cells. *Diabetes* **54** 2198–2205. (<https://doi.org/10.2337/diabetes.54.7.2198>)
- Patrono C, Garcia Rodriguez LA, Landolfi R & Baigent C 2005 Low-dose aspirin for the prevention of atherothrombosis. *New England Journal of Medicine* **353** 2373–2383. (<https://doi.org/10.1056/NEJMra052717>)
- Peck-Radosavljevic M, Wichlas M, Zacherl J, Stiegler G, Stohlawetz P, Fuchsjager M, Kreil A, Metz-Schimmerl S, Panzer S, Steininger R, *et al.* 2000 Thrombopoietin induces rapid resolution of thrombocytopenia after orthotopic liver transplantation through increased platelet production. *Blood* **95** 795–801.
- Pedersen TR 2016 The success story of LDL cholesterol lowering. *Circulation Research* **118** 721–731. (<https://doi.org/10.1161/CIRCRESAHA.115.306297>)
- Pickup J, Mattock M, Chusney G & Burt D 1997 NIDDM as a disease of the innate immune system: association of acute-phase reactants and interleukin-6 with metabolic syndrome X. *Diabetologia* **40** 1286. (<https://doi.org/10.1007/s001250050822>)
- Podrez EA, Byzova TV, Febbraio M, Salomon RG, Ma Y, Valiyaveetil M, Poliakov E, Sun M, Finton PJ, Curtis BR, *et al.* 2007 Platelet CD36 links hyperlipidemia, oxidant stress and a prothrombotic phenotype. *Nature Medicine* **13** 1086–1095. (<https://doi.org/10.1038/nm1626>)
- Pradella P, Bonetto S, Turchetto S, Uxa L, Comar C, Zorat F, De Angelis V & Pozzato G 2011 Platelet production and destruction in liver cirrhosis. *Journal of Hepatology* **54** 894–900. (<https://doi.org/10.1016/j.jhep.2010.08.018>)
- Pruenster M, Vogl T, Roth J & Sperandio M 2016 S100A8/A9: from basic science to clinical application. *Pharmacology and Therapeutics* **167** 120–131. (<https://doi.org/10.1016/j.pharmthera.2016.07.015>)
- Qian S, Fu F, Li W, Chen Q & de Sauvage FJ 1998 Primary role of the liver in thrombopoietin production shown by tissue-specific knockout. *Blood* **92** 2189–2191.
- Ridker PM, Everett BM, Thuren T, MacFadyen JG, Chang WH, Ballantyne C, Fonseca F, Nicolau J, Koenig W, Anker SD, *et al.* 2017 Antiinflammatory therapy with canakinumab for atherosclerotic disease. *New England Journal of Medicine* **377** 1119–1131. (<https://doi.org/10.1056/NEJMoa1707914>)
- Rinder CS, Bonan JL, Rinder HM, Mathew J, Hines R & Smith BR 1992 Cardiopulmonary bypass induces leukocyte-platelet adhesion. *Blood* **79** 1201–1205.
- Saur SJ, Sangkhae V, Geddis AE, Kaushansky K & Hitchcock IS 2010 Ubiquitination and degradation of the thrombopoietin receptor c-Mpl. *Blood* **115** 1254–1263. (<https://doi.org/10.1182/blood-2009-06-227033>)

- Schapiro JM, Arber N & Sidi Y 1990 Platelet hyperreactivity and prognosis in survivors of myocardial infarction. *New England Journal of Medicine* **323** 1707. (<https://doi.org/10.1056/NEJM199005313222201>)
- Schmidt MI, Duncan BB, Sharrett AR, Lindberg G, Savage PJ, Offenbacher S, Azambuja MI, Tracy RP & Heiss G 1999 Markers of inflammation and prediction of diabetes mellitus in adults (Atherosclerosis Risk in Communities study): a cohort study. *Lancet* **353** 1649–1652. ([https://doi.org/10.1016/S0140-6736\(99\)01046-6](https://doi.org/10.1016/S0140-6736(99)01046-6))
- Schramm TK, Gislason GH, Kober L, Rasmussen S, Rasmussen JN, Abildstrom SZ, Hansen ML, Folke F, Buch P, Madsen M, *et al.* 2008 Diabetes patients requiring glucose-lowering therapy and nondiabetics with a prior myocardial infarction carry the same cardiovascular risk: a population study of 3.3 million people. *Circulation* **117** 1945–1954. (<https://doi.org/10.1161/CIRCULATIONAHA.107.720847>)
- Sheikh MY, Raoufi R, Atla PR, Riaz M, Oberer C & Moffett MJ 2012 Prevalence of cirrhosis in patients with thrombocytopenia who receive bone marrow biopsy. *Saudi Journal of Gastroenterology* **18** 257–262. (<https://doi.org/10.4103/1319-3767.98431>)
- Shuldiner AR, O'Connell JR, Bliden KP, Gandhi A, Ryan K, Horenstein RB, Damcott CM, Pakyz R, Tantry US, Gibson Q, *et al.* 2009 Association of cytochrome P450 2C19 genotype with the antiplatelet effect and clinical efficacy of clopidogrel therapy. *JAMA* **302** 849–857. (<https://doi.org/10.1001/jama.2009.1232>)
- Stratz C, Bomick T, Younas I, Kittel A, Amann M, Valina CM, Nuhrenberg T, Trenk D, Neumann FJ & Hochholzer W 2016 Comparison of immature platelet count to established predictors of platelet reactivity during thienopyridine therapy. *Journal of the American College of Cardiology* **68** 286–293. (<https://doi.org/10.1016/j.jacc.2016.04.056>)
- Sungaran R, Markovic B & Chong BH 1997 Localization and regulation of thrombopoietin mRNA expression in human kidney, liver, bone marrow, and spleen using in situ hybridization. *Blood* **89** 101–107.
- Tan TP, Arekapudi A, Metha J, Prasad A & Venkatraghavan L 2015 Neutrophil-lymphocyte ratio as predictor of mortality and morbidity in cardiovascular surgery: a systematic review. *ANZ Journal of Surgery* **85** 414–419. (<https://doi.org/10.1111/ans.13036>)
- Tavil Y, Sen N, Yazici H, Turfan M, Hizal F, Cengel A & Abaci A 2010 Coronary heart disease is associated with mean platelet volume in type 2 diabetic patients. *Platelets* **21** 368–372. (<https://doi.org/10.3109/09537101003628421>)
- Tolani S, Pagler TA, Murphy AJ, Bochem AE, Abramowicz S, Welch C, Nagareddy PR, Holleran S, Hovingh GK, Kuivenhoven JA, *et al.* 2013 Hypercholesterolemia and reduced HDL-C promote hematopoietic stem cell proliferation and monocytosis: studies in mice and FH children. *Atherosclerosis* **229** 79–85. (<https://doi.org/10.1016/j.atherosclerosis.2013.03.031>)
- Vergeer M, Korporea SJ, Franssen R, Meurs I, Out R, Hovingh GK, Hoekstra M, Sierts JA, Dallinga-Thie GM, Motazacker MM, *et al.* 2011 Genetic variant of the scavenger receptor BI in humans. *New England Journal of Medicine* **364** 136–145. (<https://doi.org/10.1056/NEJMoa0907687>)
- Vlachojannis GJ, Dimitropoulos G & Alexopoulos D 2011 Clopidogrel resistance: current aspects and future directions. *Hellenic Journal of Cardiology* **52** 236–245.
- von Hundelshausen P, Weber KS, Huo Y, Proudfoot AE, Nelson PJ, Ley K & Weber C 2001 RANTES deposition by platelets triggers monocyte arrest on inflamed and atherosclerotic endothelium. *Circulation* **103** 1772–1777.
- Vuckovic S, Withers G, Harris M, Khalil D, Gardiner D, Flesch I, Tepes S, Greer R, Cowley D, Cotterill A, *et al.* 2007 Decreased blood dendritic cell counts in type 1 diabetic children. *Clinical Immunology* **123** 281–288. (<https://doi.org/10.1016/j.clim.2007.03.002>)
- Wang X, Jiang W, Li F, Hua F, Zhan Y, Li Y, Ji L, Zou S, Min Z, Song D, *et al.* 2014a Abnormal platelet kinetics are detected before the occurrence of thrombocytopenia in HBV-related liver disease. *Liver International* **34** 535–543. (<https://doi.org/10.1111/liv.12309>)
- Wang Y, Fang C, Gao H, Bilodeau ML, Zhang Z, Croce K, Liu S, Morooka T, Sakuma M & Nakajima K 2014b Platelet-derived S100 family member myeloid-related protein-14 regulates thrombosis. *Journal of Clinical Investigation* **124** 2160–2171. (<https://doi.org/10.1172/JCI70966>)
- Wanner C, Lachin JM, Inzucchi SE, Fitchett D, Mattheus M, George J, Woerle HJ, Broedl UC, von Eynatten M, Zinman B, *et al.* 2018 Empagliflozin and clinical outcomes in patients with type 2 diabetes mellitus, established cardiovascular disease, and chronic kidney disease. *Circulation* **137** 119–129. (<https://doi.org/10.1161/CIRCULATIONAHA.117.028268>)
- Weber C & Noels H 2011 Atherosclerosis: current pathogenesis and therapeutic options. *Nature Medicine* **17** 1410–1422. (<https://doi.org/10.1038/nm.2538>)
- Weisberg SP, McCann D, Desai M, Rosenbaum M, Leibel RL & Ferrante AW Jr 2003 Obesity is associated with macrophage accumulation in adipose tissue. *Journal of Clinical Investigation* **112** 1796–1808. (<https://doi.org/10.1172/JCI200319246>)
- Wheeler JG, Mussolino ME, Gillum RF & Danesh J 2004 Associations between differential leucocyte count and incident coronary heart disease: 1764 incident cases from seven prospective studies of 30,374 individuals. *European Heart Journal* **25** 1287–1292. (<https://doi.org/10.1016/j.ehj.2004.05.002>)
- Woo SJ, Ahn SJ, Ahn J, Park KH & Lee K 2011 Elevated systemic neutrophil count in diabetic retinopathy and diabetes: a hospital-based cross-sectional study of 30,793 Korean subjects. *Investigative Ophthalmology and Visual Science* **52** 7697–7703. (<https://doi.org/10.1167/iovs.11-7784>)
- Woollard KJ & Geissmann F 2010 Monocytes in atherosclerosis: subsets and functions. *Nature Reviews Cardiology* **7** 77–86. (<https://doi.org/10.1038/nrcardio.2009.228>)
- World Health Organisation 2017 Cardiovascular diseases. Geneva, Switzerland: WHO. (available at: http://www.who.int/cardiovascular_diseases/en/)
- Yvan-Charvet L, Pagler T, Gautier EL, Avagyan S, Siry RL, Han S, Welch CL, Wang N, Randolph GJ, Snoeck HW, *et al.* 2010 ATP-binding cassette transporters and HDL suppress hematopoietic stem cell proliferation. *Science* **328** 1689–1693. (<https://doi.org/10.1126/science.1189731>)

Received in final form 3 April 2018

Accepted 2 May 2018

Accepted Preprint published online 2 May 2018