

## REVIEW

## 100 YEARS OF INSULIN

# A brief history of diabetes genetics: insights for pancreatic beta-cell development and function

Jennifer M Ikle<sup>1</sup> and Anna L Gloyn<sup>1,2</sup><sup>1</sup>Division of Endocrinology, Department of Pediatrics, Stanford University School of Medicine, Stanford, California, USA<sup>2</sup>Stanford Diabetes Research Center, Stanford University, Stanford, California, USACorrespondence should be addressed to A L Gloyn: [agloyn@stanford.edu](mailto:agloyn@stanford.edu)

This paper forms part of a special section on 100 years of insulin. The guest editors for this section were James Cantley and Decio Eizirik.

## Abstract

Since the discovery of insulin 100 years ago, our knowledge and understanding of diabetes have grown exponentially. Specifically, with regards to the genetics underlying diabetes risk, our discoveries have paralleled developments in our understanding of the human genome and our ability to study genomics at scale; these advancements in genetics have both accompanied and led to those in diabetes treatment. This review will explore the timeline and history of gene discovery and how this has coincided with progress in the fields of genomics. Examples of genetic causes of monogenic diabetes are presented and the continuing expansion of allelic series in these genes and the challenges these now cause for diagnostic interpretation along with opportunities for patient stratification are discussed.

### Key Words

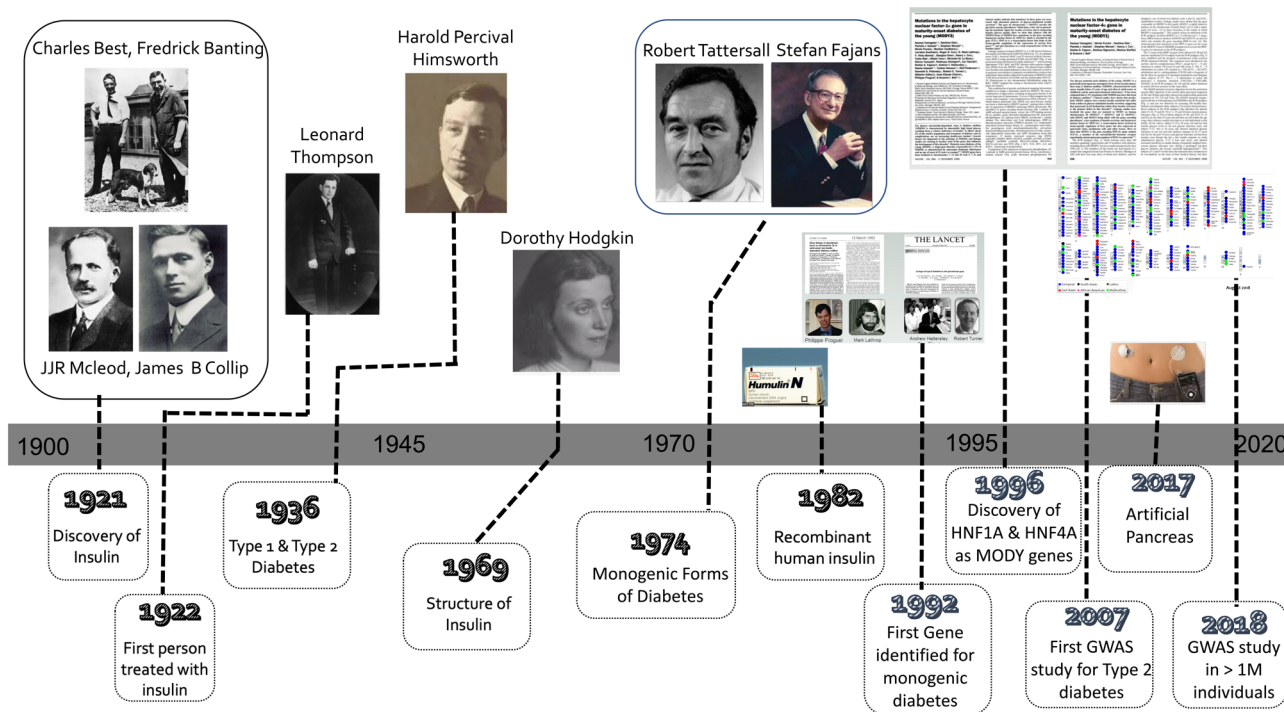
- ▶ diabetes
- ▶ pancreas
- ▶ genomics
- ▶ b-cell development

*Journal of Endocrinology*  
(2021) **250**, R23–R35

## Introduction

It was in the 1930s, after the discovery and first use of insulin, that Harold Percival Himsworth first made the distinction between type 1 and type 2 diabetes (Bryder & Harper 2013). However, it was not until the 1970s, following decades of observation, that both Stefan Fajans and Robert Tattersall extended this classification to recognize the existence of diabetes subtypes inherited in an autosomal dominant manner (Tattersall 1974, Tattersall & Fajans 1975) (Fig. 1). This dominantly inherited form of diabetes was originally reported as 'mild familial diabetes with dominant inheritance', and subsequently 'maturity-onset diabetes of the young (MODY)', to distinguish it from juvenile onset type 1 diabetes and indicate its similarities in clinical presentation to maturity-onset diabetes (now

known as type 2) (Tattersall & Fajans 1975). In recent years, we have seen a gradual move toward using the broader term 'monogenic diabetes' to encompass other genetic types of diabetes, such as neonatal or syndromic diabetes. Fueled by steady improvements in our understanding of the human genome, and coupled with technological advancement, we have seen the careful dissection of the genetic causes of these monogenic forms of diabetes. This has provided numerous insights into the machinery responsible for making and maintaining functional insulin-secreting pancreatic  $\beta$ -cells (Fig. 2). In this review, we focused on how these discoveries have shaped our understanding of insulin secretion across the phenotypic spectrum of diabetes and provided a model for precision medicine in diabetes.



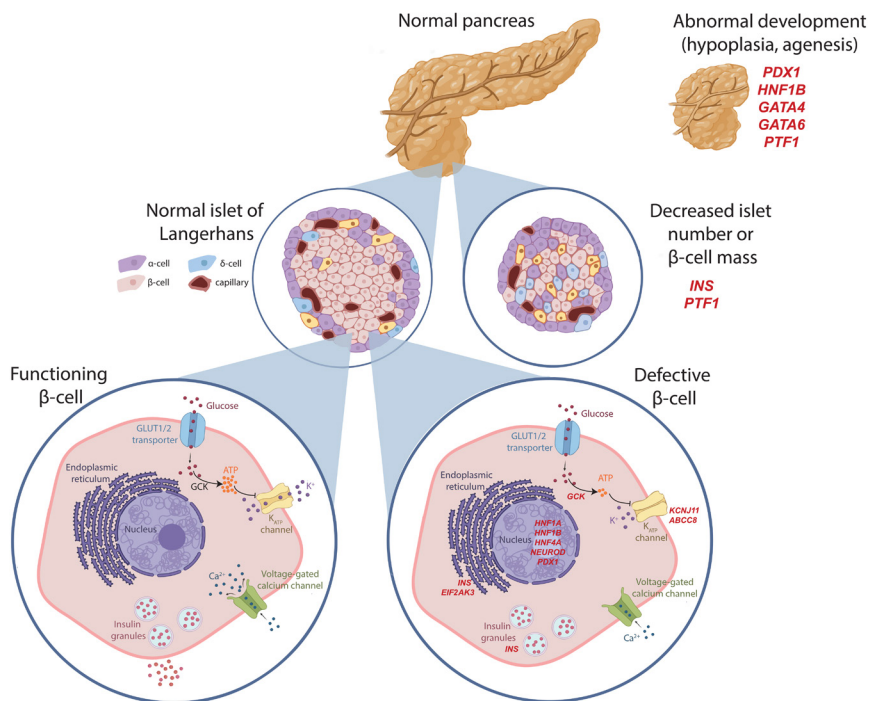
**Figure 1**

Timeline indicating key genetic discoveries in the context of our understanding of the hormone insulin and its use therapeutically.

### Recognition of autosomal dominantly inherited diabetes

Maturity-onset diabetes of the young (MODY) is defined as autosomal, dominantly inherited diabetes which is

characterized by non-insulin dependence, with an early age of onset (at least one affected family member with an onset before 25 years of age) and pancreatic  $\beta$ -cell dysfunction. In the 1950s, Fajans and Conn were attempting to develop a method for earlier detection of diabetes; whilst on this



**Figure 2**

Schematic representation of the pancreatic  $\beta$ -cell illustrating the three main mechanisms by which monogenic diabetes arises. Gene defects of selected representative genes at each stage indicated in red italics. Defect in pancreas/ $\beta$ -cell development leading to pancreatic agenesis or hypoplasia (*PDX1*, *HNF1B*, *GATA4*, *GATA6*, *PTF1A*), decreased  $\beta$ -cell mass or proliferations (*INS*, *PTF1A*) or  $\beta$ -cell dysfunction, including glucose sensing (*GSK3*), ATP responsiveness (*ABCC8*, *KCNJ11*), ER stress (*INS*, *EIF2AK3*), and transcriptional regulation (*HNF1A*, *HNF1B*, *HNF4A*, *NEUROD1*, *PDX1*). Created with BioRender.com.

quest, they discovered 'unsuspected diabetes' in about 20% of subjects who had a close relative with diabetes. They noted that not only was the unsuspected 'chemical diabetes' distinct from juvenile-onset diabetes (now known as type 1 diabetes) but also that the inheritance was different (Fajans & Conn 1959).

Given what we now know, it is particularly fascinating that the early descriptions of MODY in the literature indicate that subjects were often treated with sulfonylureas to maintain their glucose levels (Fajans & Brown 1993). Even before the various subtypes of MODY were genetically dissected, it was apparent that there were families with distinct clinical phenotypes. Some cases were characterized by years of mild fasting hyperglycemia, whereas others progressed to persistent fasting hyperglycemia, often preceded by varying degrees of glucose intolerance (Fajans 1987, 1990). Of course, this now fits perfectly with our understanding of the differences in the underlying pathophysiology of glucokinase (GCK) vs transcription factor (HNF1A/HNF4A/HNF1B) MODY.

At the time of writing this article, the number of genetic subtypes causing MODY differs depending on the source of information. Online Mendelian inheritance in man (OMIM) lists 14 genetic subtypes; however, not all of these meet the American College of Medical Genetics criteria and a shorter list of 10 subtypes is more broadly acknowledged (Zhang *et al.* 2021). While there are multiple genetic causes, most cases in the clinical setting are due to mutations in three of these genes (*HNF1A*, *HNF4A*, *GCK*) which can collectively account for up to 95% of all MODY cases (Shields *et al.* 2010).

## Subtypes of monogenic diabetes

Although we still use the name maturity-onset diabetes of the young (MODY), the field has moved in recent years to rebrand these conditions to the broader monogenic diabetes and to use the names of the genes responsible, for example, 'glucokinase diabetes' or 'transcription factor diabetes' (Ellard *et al.* 2008, McDonald & Ellard 2013). This shift in naming convention reflects our broadening understanding of the wide phenotypic spectrum which can result from a given gene mutation, leading to blurred boundaries between historic non-genetic nomenclature which relied on the age of diagnosis (e.g. MODY vs neonatal diabetes). As we unravel the genetic causes for monogenic diabetes (Fig. 1), the rationale for this shift in thinking will become apparent along with the emerging themes of monogenic forms of pancreatic  $\beta$ -cell dysfunction – largely

arising from either an intrinsic defect in  $\beta$ -cell function (e.g. *GCK*, *KCNJ11*), pancreas development (e.g. *PDX1*, *HNF1A*) or  $\beta$ -cell proliferation and mass (e.g. *INS*). This review will focus on the most common genes connected with monogenic diabetes while also highlighting a selection of less commonly seen genes to illustrate additional pathologic mechanisms.

### Hepatocyte nuclear factor 4 alpha (HNF4A-MODY, MODY1)

In 1992, a locus on chromosome 20p containing *HNF4A* was identified by linkage analysis in a large pedigree, known as the RW pedigree (Bowden *et al.* 1992). However, it was not until 1996 that back-to-back publications reported the positional cloning of the genes responsible for both MODY1 (*HNF4A*) and MODY3 (*HNF1A*). Prior to this discovery, both transcription factors had recognized roles in the liver but these studies unearthed a previously unknown role in the regulation of pancreatic  $\beta$ -cell development and function (Yamagata *et al.* 1996a,b).

*HNF4A* belongs to a group of hepatocyte nuclear transcription factors, some of which are important in regulating insulin secretion (including *HNF1A* and *HNF1B* discussed below) (Yamagata *et al.* 1996a). As the name suggests, these transcription factors were originally described in the liver but they also function within the pancreatic  $\beta$ -cell to directly regulate the gene expression important for both pancreatic islet-cell development as well as glucose metabolism, including the insulin gene itself (Yamagata *et al.* 1996a).

Patients with heterozygous loss-of-function mutations in *HNF4A* have a progressive decline in  $\beta$ -cell function, with most carriers developing diabetes in adolescence or early adulthood. Because *HNF4A* also has a role in cholesterol and fatty acid metabolism, individuals with HNF4A-MODY may have unique changes in cholesterol and triglyceride levels (Pearson *et al.* 2005). Importantly, a diagnosis of HNF4A-MODY has implications for treatment as patients can often be successfully treated with oral sulfonylureas rather than insulin (Pearson *et al.* 2003, Hattersley *et al.* 2018).

### Glucokinase (GCK-MODY, MODY2)

Shortly after the reports of linkage on chromosome 20p, linkage to chromosome 7p, where the gene for the key glycolytic enzyme *glucokinase* (*GCK*) resides, was described in both French and UK pedigrees in 1992 (Froguel *et al.* 1992, Hattersley *et al.* 1992) (Fig. 1). The demonstration

of linkage was quickly followed by characterization of the *GCK* human gene and the detection of diabetes-causing mutations (Stoffel *et al.* 1992). *GCK* is a member of the hexokinase family of enzymes and is largely expressed in hepatocytes and pancreatic  $\beta$ -cells where it is responsible for catalyzing the transfer of phosphate from ATP to glucose, generating glucose-6-phosphate (Magnuson *et al.* 1989). This catalytic transfer is the first, rate-limiting step in glucose metabolism, and as such *GCK* is often considered the glucose sensor of the  $\beta$ -cell (Bedoya *et al.* 1986). A single inactivating mutation in *GCK* impairs that glucose sensor, as well as the  $\beta$ -cell ability to respond to increasing glucose concentrations, ultimately leading to MODY. Thus, hyperglycemia in individuals with *GCK*-MODY is essentially caused by increasing the glucose set point that is necessary to induce insulin secretion (Velho *et al.* 1992). To date, *in vitro* studies have indicated mutation-specific variation in the severity of the functional defect; however, in the clinical setting, heterozygous inactivating mutations result in strikingly similar phenotypes, irrespective of the specific mutation (Stride *et al.* 2002). This observation is explained by compensation by the WT allele, which is post-translationally upregulated in response to the elevated circulating glucose levels (Gloyn *et al.* 2004c). In contrast, activating *GCK* mutations lead to over-secretion of insulin and hypoglycemia, and given the lack of compensation by the WT allele, the phenotype is more varied (Glaser *et al.* 1998, Gloyn 2003, Cuesta-Muñoz *et al.* 2004).

Patients with *GCK*-MODY have stable mild fasting hyperglycemia throughout their lifespan; however, due to the mild degree of hyperglycemia, and the low incidence of micro- or macrovascular complications, individuals with *GCK*-MODY typically do not require pharmacological treatment (Steele *et al.* 2014). The exception to this is during pregnancy, where glucose-lowering medications may be considered in the case of increased fetal growth observed on ultrasound (Chakera *et al.* 2015).

### Hepatocyte nuclear factor 1 alpha (HNF1A-MODY, MODY3)

Positional cloning of the linkage signal on chromosome 12p, which had been identified in multiple families with monogenic diabetes, identified another liver transcription factor gene, *hepatocyte nuclear factor 1 alpha* (*HNF1A*), as a major cause of monogenic diabetes (Yamagata *et al.* 1996b). Like *HNF4A*, *HNF1A* functions as an important transcriptional regulator of insulin and other genes involved in islet-cell development and glucose metabolism. *HNF1A* is also a key transcriptional regulator

of the sodium-glucose transporter in the kidney (*SGLT2*), therefore, patients with *HNF1A*-MODY have a low renal threshold for glucose (Pontoglio *et al.* 2000).

Functional studies have demonstrated that protein-truncating mutations result in haploinsufficiency (Harries *et al.* 2004), whilst missense variants lead to loss of function through a variety of mechanisms (Althari *et al.* 2020). More recently, our appreciation for the role of *HNF1A* in MODY has been expanded, as homozygous hypomorphic variants have also been identified as a cause of MODY (Misra *et al.* 2020). These observations fit with a growing body of evidence demonstrating that genetic variation across the functional severity spectrum corresponds to phenotype (Althari *et al.* 2020).

*HNF1A*-MODY is characterized by normal glucose tolerance early in childhood, with progressive hyperglycemia developing in adolescence or adulthood. Because of the progressive nature of *HNF1A*-MODY, these individuals are at risk for microvascular complications and do require glucose-lowering therapy (Lee *et al.* 1999, Hattersley *et al.* 2018). Importantly, as with a diagnosis of *HNF4A*-MODY, patients with *HNF1A*-MODY can usually be treated with oral sulfonylureas rather than insulin (Pearson *et al.* 2003, Hattersley *et al.* 2018).

### Pancreatic duodenal homeobox factor 1 (PDX1-MODY, MODY4)

*Pancreatic duodenal homeobox factor 1* (*PDX1*), previously referred to as *insulin promoter factor 1* (*IPF1*), is yet another transcription factor involved in monogenic diabetes. Located on chromosome 13, *PDX1* plays a central role in determining cell fate in embryonic pancreatic development, and also in the differentiation, maturation, and function of pancreatic  $\beta$ -cells (Stoffel *et al.* 1995, Inoue *et al.* 1996). In 1997, Stoffers and colleagues shed light on this critical transcription factor first by demonstrating that homozygous loss resulted in pancreatic agenesis and neonatal diabetes (NDM) (Stoffers *et al.* 1997b) and secondly, that heterozygous carriers of these mutations had defective insulin secretion, consistent with previously described MODY phenotypes (Stoffers *et al.* 1997a).

*PDX1*-MODY is characterized by often having a slightly later age of onset than other forms of MODY (Stoffers *et al.* 1997a). Some patients have only mildly impaired glucose tolerance while others have fulminant diabetes requiring daily insulin injections. Although early reports suggested that variants in *PDX1* were associated with increased risk of diabetes due to impaired *PDX1*-mediated *INS* expression (Ahlgren *et al.* 1998), larger genome-wide studies have



not substantiated these early findings (Edghill *et al.* 2011). Since there is variation in phenotype within PDX1-MODY, the treatment must be tailored to the individual patient; options range from dietary changes alone to sulfonylureas or insulin (Hattersley *et al.* 2018, Delvecchio *et al.* 2020).

### Hepatocyte nuclear factor 1 beta (HNF1B-MODY, MODY5)

HNF1B is closely related to HNF1A and in fact actually dimerizes with it (Mendel *et al.* 1991). Unsurprisingly, it plays a similarly important function in pancreatic embryonic development but unlike HNF1A, it also has a vital role in nephron embryonic development (Horikawa *et al.* 1997). This leads to a wide spectrum of phenotypes which may include diabetes or kidney disease alone or a combination of the two. Kidney disease, typically renal cysts, is somewhat unique to HNF1B-MODY, and so should be expected in young patients presenting with both diabetes and kidney disease. HNF1B-MODY can also be complicated by urogenital tract malformations, hyperuricemia, and gout (Firdous *et al.* 2018). Interestingly, patients with HNF1B-MODY display both defects in insulin secretion and insulin sensitivity (Pearson *et al.* 2004).

### Neurogenic differentiation-1 (NEUROD1-MODY, MODY6)

Neurogenic differentiation-1 (NEUROD1, also known as BETA2) is a helix-loop-helix (HLH) transcription factor that functions as a regulatory switch for pancreatic and neuronal development. One important role of NEUROD1 is in directly regulating insulin gene (*INS*) expression by binding to a critical E-box motif on the *INS* promoter (Malecki *et al.* 1999). NEUROD1 also has important roles in activating other genes encoding components of the insulin secretion pathway within the  $\beta$ -cell, including *ABCC8*, *GCK*, and *PAX6* (Kim *et al.* 2002, Marsich *et al.* 2003, Moates *et al.* 2003).

In 2001, Kristinsson and colleagues confirmed that heterozygous *NEUROD1* mutations are a rare cause of MODY (Kristinsson *et al.* 2001), while homozygous loss-of-function mutations lead to NDM and neurological impairment (Rubio-Cabezas *et al.* 2010). NEUROD1-MODY can be diagnosed throughout the lifespan, as early as childhood and into the seventh decade most likely reflecting the incomplete penetrance of some variants and requirement for additional environmental or genetic risk factors. As with many of the other MODY subtypes, clinical presentation and course can be quite variable even within

a single family (Delvecchio *et al.* 2020); approximately 20% of patients require insulin therapy, whilst others may respond well to dietary modifications alone or in combination with oral glucose-lowering agents.

### Genetic causes of monogenic diabetes outside the $\beta$ -cell

Mutations in *CEL*, encoding *carboxy-ester lipase*, cause young-onset diabetes coupled with exocrine pancreas dysfunction (CEL-MODY), which is characterized by low fecal elastase levels (Raeder *et al.* 2006). It is notable that the disease-causing mutations are caused by alterations in the variable number of tandem repeats (VNTR) region rather than in the protein-coding sequence (Raeder *et al.* 2006). This variety of monogenic diabetes is unusual as it does not appear to directly involve defects in the  $\beta$ -cell rather it involves the acinar cells of the pancreas and may involve defects in mitogen-activating protein kinase (MAPK) signaling (Raeder *et al.* 2014). This atypical monogenetic diabetes may prove to be a paradigm for other types of diabetes as multiple recent studies have suggested a role for the exocrine pancreas in mediating genetic association signals for both type 1 and type 2 diabetes (Ng *et al.* 2019, Chiou *et al.* 2021).

### Monogenic diabetes diagnosed in the first 6 months of life

Many of the early strides in identifying genetic diabetes, particularly in describing key MODY genes, relied on chromosomal linkage analysis. In 2001, the Human Genome Project published the first complete sequence for the human genome, and with that, sparked a new era in genetic discoveries (Lander *et al.* 2001). As our genetic capabilities continued to progress, so did our understanding of genetic regulation of insulin secretion and related disorders, specifically in regards to neonatal diabetes mellitus (NDM). NDM was first described in 1852 by J F Kitselle and is often complicated by poor *in utero* growth and neonatal failure to thrive (Shield 2000). NDM is a heterogeneous disease defined as diabetes with onset during the first 6 months of life with a monogenic cause identifiable in up to 85% of cases (Letourneau & Greeley 2018). NDM exists on a spectrum, with mild forms being transient (TNDM) and resolving spontaneously by 18 months of life, permanent forms (PNDM) which do not resolve, and syndromic forms that may be accompanied by a number of other complications. It is worth noting that

many of the genes described above in causing MODY can also be related to NDM, with a strong genotype-phenotype correlation. Of the >80% of NDM cases with a known genetic cause, more than 18 causative genes have been described in the literature but many of these are very rare and only seen in a small number of families (Delépine *et al.* 2000, Gloyn *et al.* 2004c, Babenko *et al.* 2006, Støy *et al.* 2007, Flanagan *et al.* 2014, De Franco *et al.* 2015, 2017, 2019, 2020a, Johnson *et al.* 2017, De Franco 2020). In this review, we highlight the most common varieties and those which have informed our current thinking on  $\beta$ -cell biology and the continuums of risk in diabetes.

### ATP-sensitive potassium channel ( $K_{ATP}$ ) defects ( $K_{ATP}$ -NDM)

Mutations in pancreatic  $K_{ATP}$  channel genes are the most common known causes of NDM. These channels, composed of four SUR1 subunits (encoded by *ABCC8*) and four Kir6.2 subunits (encoded by *KCNJ11*), are critical for regulating membrane excitability and insulin secretion by the  $\beta$ -cell (Shimomura & Maejima 2017). At low plasma glucose concentration,  $K_{ATP}$  channels are normally open, the cell membrane is hyperpolarized, and voltage-dependent calcium channels (VDCCs) are closed, thus inhibiting insulin secretion. Glucose metabolism increases the intracellular (ATP)/(ADP) ratio, closing  $K_{ATP}$  channels, leading to membrane depolarization, calcium influx through VDCCs, and triggering insulin release.

The role of these two  $K_{ATP}$  channel subunits in NDM was first appreciated in 2004 when heterozygous activating mutations in the *KCNJ11* gene were reported as a major cause of permanent neonatal diabetes (Gloyn *et al.* 2004b). A number of additional causative mutations were subsequently identified in *KCNJ11* (Gloyn *et al.* 2004a, Sagen *et al.* 2004, Yorifuji *et al.* 2005). The physiologic role of these specific mutations was further confirmed by co-expressing mutated Kir6.2 and demonstrating a significant decrease in response to ATP by the  $K_{ATP}$  channel (Gloyn *et al.* 2004a,b, Tammaro *et al.* 2005). In 2005, it was further demonstrated that distinct mutations in *KCNJ11* can also lead to transient, or remitting, diabetes, suggesting that certain abnormalities within this channel can lead to a fluctuating phenotype (Gloyn *et al.* 2005). Shortly after, it was also demonstrated that some patients with particular *KCNJ11* mutations have diabetes complicated by additional neurological features, a syndrome which has been termed developmental delay, epilepsy and neonatal diabetes (DEND) (Gloyn *et al.* 2006). Around this same time,

Babenko *et al.* identified seven novel activating mutations in *ABCC8*, which also lead to NDM (Babenko *et al.* 2006). In direct contrast to the activating mutations leading to NDM, inactivating mutations in these same genes result in reduced  $K_{ATP}$  channel activity,  $\beta$ -cell hyperexcitability, and excessive insulin secretion (Kane *et al.* 1996, Nichols *et al.* 1996, Thomas *et al.* 1996, Dunne *et al.* 1997, Huopio *et al.* 2000).

The discovery linking the  $K_{ATP}$  channel mutations to neonatal diabetes was critical for patient care – prior to this knowledge, individuals with neonatal diabetes required lifelong treatment with insulin for survival. However, since this pathology is directly due to a failure of the  $K_{ATP}$  channels to close in response to ATP generated by glucose metabolism, the majority of patients with this variety of diabetes are responsive to oral sulfonylureas, which act on SUR1 to close the channel in an ATP-independent manner restoring insulin secretion (Gloyn *et al.* 2004a, Sagen *et al.* 2004). This discovery has enabled many affected patients to discontinue insulin use with great success, and often achieving better glycemic control with sulfonylureas than with their prior insulin therapy. More recent studies have shown that the majority of these patients still had excellent glycemic control at 10 year follow-up, confirming sulfonylureas as a safe and effective approach over the long-term (Bowman *et al.* 2018). This responsiveness to oral medication, along with a strong genotype-phenotype correlation (Flanagan *et al.* 2006) which can guide medical decision-making and family counseling, makes an early molecular diagnosis for NDM imperative.

### INS-PNDM

It was really only a matter of time before mutations in the *insulin* gene (*INS*) were discovered as a cause of diabetes. The search had been on for many years but the first descriptions were in patients with hyperproinsulinemia and not diabetes (Gruppuso *et al.* 1984). The reason for this, as often is the case, is the site and consequence of the mutation. In 2007 a team led by Graeme Bell, who had cloned the gene back in the early 1980s (Bell *et al.* 1980), combined linkage analysis with a candidate gene approach to identify first diabetes-causing *INS* mutation, and subsequently identified nine additional mutations in a total of 16 probands with NDM (Støy *et al.* 2007, Hodish *et al.* 2010). In this cohort, subjects had a median age of diabetes presentation at 9 weeks and were often complicated by ketoacidosis. Due to the mutation being within the insulin gene itself, predicted to prevent normal folding and secretion, these individuals

are not eligible for treatment with sulfonylureas, which acts on the secretory pathway rather than the insulin protein itself. It has been observed that mice with similarly misfolded insulin proteins may actually have increased  $\beta$ -cell death due to extreme endoplasmic reticulum (ER) stress (Støy *et al.* 2007). Large-scale screening of patients with PNDM identified *INS* mutations as one of the most common causes of this disease, secondly only to  $K_{ATP}$  channel mutations (Edghill *et al.* 2008). A recent study by Balboa *et al.* demonstrated  $\beta$ -like cells generated from *in vitro* differentiated induced pluripotent stem cells (iPSCs) from individuals carrying *INS* mutations have diminished  $\beta$ -cell proliferation, leading to a decreased  $\beta$ -cell mass, likely playing a role in diabetes pathogenesis (Balboa *et al.* 2018). Recessively inherited *INS* mutations have also been shown to cause PNDM due to a contrasting pathogenic mechanism of decreased insulin biosynthesis through a variety of regulatory mechanisms (Garin *et al.* 2010).

### GCK-PNDM

*Glucokinase*, discussed in detail above as a MODY-causing gene when it presents as a heterozygous mutation, can also cause permanent NDM when presenting with homozygous or compound heterozygous mutations (Njølstad *et al.* 2001, 2003). These individuals have similar traits to those with  $K_{ATP}$ -related NDM, including intrauterine growth restriction, low birth weights, and insulin requirements shortly after birth (Njølstad *et al.* 2003). Not all homozygous or compound heterozygous inactivating *GCK* mutations cause NDM though. A relatively recent study demonstrated the importance of protein stability as a major contributor to the severity of inactivating *GCK* mutations. This became apparent through the study of a homozygous *GCK* mutation which presented as diabetes in young-adolescence rather than at birth (Raimondo *et al.* 2014).

### PDX1-PNDM

*PDX1* is another MODY-causing gene that is also a rare, but important, cause of permanent neonatal diabetes. *PDX1* is critical for pancreatic development (Jonsson *et al.* 1994), and some individuals with *PDX1* mutations have little or no development of functional pancreatic islets (Stoffers *et al.* 1997b). Although most cases are confirmed to have pancreatic hypoplasia or agenesis, there are some reports in patients with a normally formed pancreas that may still be affected by permanent NDM due to a

*PDX1* mutation (De Franco *et al.* 2013). By regulating the expression of a number of important islet transcripts (insulin, glucokinase, somatostatin), *PDX1* serves as a master regulator of gene expression within the islet (Hui & Perfetti 2002). Additional genes important for pancreatic development, including *NKX2-2*, *GATA4*, *GATA6*, *GLIS3*, *RFX6*, and *PTF1A*, have also been identified as rare causes of NDM (Wang *et al.* 2004, Senée *et al.* 2006, Doyle & Sussel 2007, Chen *et al.* 2008, Fukuda *et al.* 2008, Smith *et al.* 2010, Allen *et al.* 2011, Carrasco *et al.* 2012, Stanescu *et al.* 2015, Xuan & Sussel 2016).

### GLIS3-PNDM

Gli-similar 3 (GLIS3) is a Krüppel-like zinc finger transcription factor that is important during cell specification and patterning during pancreatic development. GLIS3 interacts with other important  $\beta$ -cell transcription factors including *PDX1* and *NEUROD1* and binds directly to the insulin promoter to positively regulate gene expression. In mice, deletion of both copies of *Glis3* leads to neonatal diabetes (Kang *et al.* 2009, Yang *et al.* 2009). GLIS3 is also important in humans, as homozygous mutations in *GLIS3* are responsible for a syndrome characterized by neonatal diabetes, congenital hypothyroidism, polycystic kidneys, and facial anomalies (Senée *et al.* 2006). At least one patient with compound heterozygous *GLIS3* mutations has been described; this patient has isolated NDM but none of the other features (Dimitri *et al.* 2011). Genome-wide association studies (GWAS) have also demonstrated variants at the *GLIS3* locus which are associated with both type 1 and type 2 diabetes (Aylward *et al.* 2018).

### Syndromic monogenic diabetes

Neonatal diabetes has also been identified as a component of a number of multi-system syndromes, many of which have identified genetic causes. The majority of these syndromes are rare, and because of variable presentation, are at risk for late or missed diagnosis. Despite the heterogeneous nature of these conditions, the genetic dissection of these conditions and molecular understanding of the underlying pathophysiology make it apparent that there are some shared clinical features and biological mechanisms. For example, a large number of patients with NDM also have neurological symptoms (e.g. epilepsy, developmental delay) (De Franco *et al.* 2015,

2020b). Neurons and  $\beta$ -cells have similar electrophysiology and signaling mechanisms, making this frequent association between defects in glucose homeostasis and neurology unsurprising (De Franco *et al.* 2020a,b). A majority of the genes implicated in these syndromes are transcription factors with key roles in the development of both cell types (ex. *PTF1A*, *NEUROD1*, *MNX1*, and *NKX2-2*).

Other causative gene mutations are related to ER stress, either due to mutations in important checkpoints in controlling the ER stress response, or due to mutations that directly result in protein-misfolding, and subsequently, lead to ER stress (ex. *EIF2AK3*, *SLC19A2*, *IER3IP1*, *WFS1*, *TRMT10A*, *PPP1R15B*, *EIF2S3*) (De Franco *et al.* 2020b). Clinical presentation with diabetes can be diagnosed beyond the neonatal period well into adolescence for some of these etiologies. One example of NDM caused by ER stress is Wolcott–Rallinson syndrome (WRS); the most common cause of syndromic NDM in areas with high consanguinity (Rubio-Cabezas *et al.* 2009). It is an autosomal recessive condition and is often accompanied by skeletal dysplasia, poor growth, and liver dysfunction, in addition to NDM. Homozygous or compound heterozygous mutations in eukaryotic translation initiation factor 2- $\alpha$  kinase 3 (*EIF2AK3*), a critical component of the ER stress response, are responsible for WRS (Delépine *et al.* 2000).

### Blurring the boundaries of NDM genes in MODY

As with *PDX1*, where mutations were first described in neonatal diabetes (NDM), additional genes which are major causes of NDM have been reported as the cause of diabetes outside of infancy, consistent with MODY. These include those encoding the ATP-sensitive potassium channel subunits (*ABCC8* and *KCNJ11*). In 2012, Bonnefond and colleagues used whole-exome sequencing (WES) to study some of the 30% of French-MODY patients without a genetic diagnosis. This analysis identified a *KCNJ11* mutation, specifically, p.E227K, as the cause of MODY in a single-family (Bonnefond *et al.* 2012). In that same year, Bowman and colleagues found four novel *ABCC8* mutations within a cohort of sulfonylurea responsive MODY patients (Bowman *et al.* 2012). The term MIDY (mutant *INS*-gene induced diabetes of youth) has also been used to describe patients with *INS* mutations presenting outside the neonatal period (Liu *et al.* 2010, 2012).

### Expanding the spectrum of the role of monogenic diabetes genes in type 2 diabetes (T2D) risk

The early type 2 diabetes (T2D) genetics literature is plagued by both poorly designed and executed genetic association studies (Siontis *et al.* 2010). With a few exceptions, most earlier findings failed to replicate when expanded to large, well-powered studies. Of the early studies which have stood the test of time, it is notable that two of three such studies include genes (*PPARG*, *KCNJ11*, and *TCF7L2*) involved in monogenic forms of diabetes (Altshuler *et al.* 2000, Gloyn *et al.* 2003, Grant *et al.* 2006). In the late 2000s, people began to explore the utility of genome-wide association studies (GWAS) for understanding complex diseases and traits. GWAS compare multiple individual genomes to identify associations between specific genetic changes and a given disease or trait. International efforts for both type 1 and type 2 diabetes have been terrifically successful in uncovering hundreds of association signals. As has been the case for most complex traits, the vast majority of GWAS signals for both T1D and T2D exert their impact through non-coding variants with a presumed regulatory impact (Mahajan *et al.* 2018). A consistent finding has also been the identification of signals in or close to genes with known roles in monogenic diabetes, such as *HNF1A* and *KCNJ11*. A number of these also have coding variants across the frequency spectrum, which are associated with altered risk for T2D: sometimes they are specific to a population (e.g. p.E508K in *HNF1A*) (SIGMA Type 2 Diabetes Consortium *et al.* 2014) whilst others are common in the population (e.g. p.E23K in *KCNJ11*) (Gloyn *et al.* 2003). The field has also uncovered common regulatory variants near monogenic diabetes genes which likely have an impact in a tissue and developmental time-specific manner (e.g. *HNF4A*) (Kathiresan *et al.* 2009). These findings bring into focus a continuum between normal function and complete loss of function in these genes – an allelic spectrum – where the relationship between the specific variant and subsequent disease presentation is not necessarily straightforward (Althari *et al.* 2020). The genetic characterization of large Biobanks (e.g. UKBioBank, BioMe) will facilitate the studies required to fully understand both the relationship between genetic variation in monogenic diabetes genes and clinical phenotype as well as the impact of common genetic variation (e.g. T2D genetic risk scores) on altering the presentation of variants in these genes. Genetics has certainly delivered precision medicine for monogenic forms of diabetes; the challenge for the next decade is extending this to all types of diabetes.



## Outlook

Moving forward, our expanding knowledge surrounding the genetic changes underlying both monogenic and polygenic forms of diabetes will continue to advance our potential for personalized medicine through both precision diagnostics and therapeutics. These genetic breakthroughs, in combination with clinical biomarkers, will allow us to refine our classification and diagnosis of diabetes subtypes and provide evidence-based care to determine optimal management and decrease morbidity and mortality associated with these conditions. The importance of molecular diagnosis of MODY and NDM is quite apparent on its own; however, the groundwork laid in understanding them will continue to provide insight and guidance for more complex forms of diabetes as well.

## Closing remarks

The careful dissection of the genetic etiology of monogenic forms of diabetes has created a framework of potential mechanisms to understand how common genetic variants could exert their effect and lead to increased risk for complex forms of diabetes such as type 1 and type 2 diabetes. There are now documented examples of single-gene defects causing alterations in glucose sensing, insulin secretion, pancreas development and  $\beta$ -cell mass, and for each of these examples of how these same mechanisms influence type 1 and type 2 diabetes. As we mark the centenary of the discovery of insulin, it is remarkable to see the speed at which its discovery was translated into changes in clinical practice. With the exception of the remarkable efforts with the COVID19 vaccinations, this is not often witnessed. Progress in understanding the genetic basis of pancreatic islet-cell dysfunction in diabetes has also had an incredible century but we have some way to go before we have the same impact as Banting, Best, Collip, and McLeod.

### Declaration of interest

A L G declares that her spouse is an employee of Genentech and hold stock options in Roche. J K declares that there is no conflict of interest that could be perceived as prejudicing the impartiality of this review.

### Funding

A L G is a Wellcome Senior Fellow in Basic Biomedical Science. A L G is funded by the Wellcome (095101, 200837) and National Institute of

Diabetes and Digestive and Kidney Diseases (NIDDK) (U01-DK105535, U01-DK085545, UM1DK126185), the Stanford Diabetes Research Center (NIDDK award P30DK116074). J M I is supported by NIDDK 1K12DK122550-01.

### Acknowledgement

The authors thank their many colleagues in the field of diabetes genetics for their contributions to our understanding of the genetic basis of diabetes and ask their forgiveness for not being able to 'shine a light' in this brief review on all the wonderful work that has been done over the past 100 years.

## References

- Ahlgren U, Jonsson J, Jonsson L, Simu K & Edlund H 1998 beta-Cell-specific inactivation of the mouse *Ip1/Pdx1* gene results in loss of the beta-cell phenotype and maturity onset diabetes. *Genes and Development* **12** 1763–1768. (<https://doi.org/10.1101/gad.12.12.1763>)
- Allen HL, Flanagan SE, Shaw-Smith C, De Franco E, Akerman I, Caswell R, International Pancreatic Agenesis Consortium, Ferrer J, Hattersley AT & Ellard S & Ellard S 2011 GATA6 haploinsufficiency causes pancreatic agenesis in humans. *Nature Genetics* **44** 20–22. (<https://doi.org/10.1038/ng.1035>)
- Althari S, Najmi LA, Bennett AJ, Aukrust I, Rundle JK, Colclough K, Molnes J, Kaci A, Nawaz S, van der Lugt T, *et al.* 2020 Unsupervised clustering of missense variants in HNF1A using multidimensional functional data aids clinical interpretation. *American Journal of Human Genetics* **107** 670–682. (<https://doi.org/10.1016/j.ajhg.2020.08.016>)
- Althuler D, Hirschhorn JN, Klannemark M, Lindgren CM, Vohl MC, Nemes J, Lane CR, Schaffner SF, Bolk S, Brewer C, *et al.* 2000 The common PPARgamma Pro12Ala polymorphism is associated with decreased risk of type 2 diabetes. *Nature Genetics* **26** 76–80. (<https://doi.org/10.1038/79216>)
- Aylward A, Chiou J, Okino ML, Kadakia N & Gaulton KJ 2018 Shared genetic risk contributes to type 1 and type 2 diabetes etiology. *Human Molecular Genetics* [In press]. (<https://doi.org/10.1093/hmg/ddy314>)
- Babenko AP, Polak M, Cavé H, Busiah K, Czernichow P, Scharfmann R, Bryan J, Aguilar-Bryan L, Vaxillaire M & Froguel P 2006 Activating mutations in the *ABCC8* gene in neonatal diabetes mellitus. *New England Journal of Medicine* **355** 456–466. (<https://doi.org/10.1056/NEJMoa055068>)
- Balboa D, Saarimäki-Vire J, Borshagovski D, Survila M, Lindholm P, Galli E, Eurola S, Ustinov J, Grym H, Huopio H, *et al.* 2018 Insulin mutations impair beta-cell development in a patient-derived iPSC model of neonatal diabetes. *eLife* **7** e38519. (<https://doi.org/10.7554/eLife.38519>)
- Bedoya FJ, Wilson JM, Ghosh AK, Finegold D & Matschinsky FM 1986 The glucokinase glucose sensor in human pancreatic islet tissue. *Diabetes* **35** 61–67. (<https://doi.org/10.2337/diab.35.1.61>)
- Bell GI, Pictet RL, Rutter WJ, Cordell B, Tischer E & Goodman HM 1980 Sequence of the human insulin gene. *Nature* **284** 26–32. (<https://doi.org/10.1038/284026a0>)
- Bonnefond A, Philippe J, Durand E, Dechaume A, Huyvaert M, Montagne L, Marre M, Balkau B, Fajardy I, Vambergue A, *et al.* 2012 Whole-exome sequencing and high throughput genotyping identified *KCNJ11* as the thirteenth MODY gene. *PLoS ONE* **7** e37423. (<https://doi.org/10.1371/journal.pone.0037423>)
- Bowden DW, Akots G, Rothschild CB, Falls KF, Sheehy MJ, Hayward C, Mackie A, Baird J, Brock D & Antonarakis SE 1992 Linkage analysis of maturity-onset diabetes of the young (MODY): genetic heterogeneity and nonpenetrance. *American Journal of Human Genetics* **50** 607–618.
- Bowman P, Flanagan SE, Edghill EL, Damhuis A, Shepherd MH, Paisey R, Hattersley AT & Ellard S 2012 Heterozygous *ABCC8* mutations are a

- cause of MODY. *Diabetologia* **55** 123–127. (<https://doi.org/10.1007/s00125-011-2319-x>)
- Bowman P, Sulen Å, Barbeti F, Beltrand J, Svalastoga P, Codner E, Tessmann EH, Juliusson PB, Skriverhaug T, Pearson ER, *et al.* 2018 Effectiveness and safety of long-term treatment with sulfonylureas in patients with neonatal diabetes due to KCNJ11 mutations: an international cohort study. *Lancet: Diabetes and Endocrinology* **6** 637–646. ([https://doi.org/10.1016/S2213-8587\(18\)30106-2](https://doi.org/10.1016/S2213-8587(18)30106-2))
- Bryder L & Harper C 2013 Commentary: more than ‘tentative opinions’: Harry Himsworth and defining diabetes. *International Journal of Epidemiology* **42** 1599–1600. (<https://doi.org/10.1093/ije/dyt200>)
- Carrasco M, Delgado I, Soria B, Martín F & Rojas A 2012 GATA4 and GATA6 control mouse pancreas organogenesis. *Journal of Clinical Investigation* **122** 3504–3515. (<https://doi.org/10.1172/JCI63240>)
- Chakera AJ, Steele AM, Gloyn AL, Shepherd MH, Shields B, Ellard S & Hattersley AT 2015 Recognition and management of individuals with hyperglycemia because of a heterozygous glucokinase mutation. *Diabetes Care* **38** 1383–1392. (<https://doi.org/10.2337/dc14-2769>)
- Chen R, Hussain K, Al-Ali M, Dattani MT, Hindmarsh P, Jones PM & Marsh P 2008 Neonatal and late-onset diabetes mellitus caused by failure of pancreatic development: report of 4 more cases and a review of the literature. *Pediatrics* **121** e1541–e1547. (<https://doi.org/10.1542/peds.2007-3543>)
- Chiou J, Geusz RJ, Okino M-L, Han JY, Miller M, Benaglio P, Huang S, Korgaonkar K, Heller S, Kleger A, *et al.* 2021 Large-scale genetic association and single cell accessible chromatin mapping defines cell type-specific mechanisms of type 1 diabetes risk. *bioRxiv* [In press]. (<https://doi.org/10.1101/2021.01.13.426472>)
- Cuesta-Muñoz AL, Huopio H, Otonkoski T, Gomez-Zumaquero JM, Nääntö-Salonen K, Rahier J, López-Enriquez S, García-Gimeno MA, Sanz P, Soriguer FC, *et al.* 2004 Severe persistent hyperinsulinemic hypoglycemia due to a de novo glucokinase mutation. *Diabetes* **53** 2164–2168. (<https://doi.org/10.2337/diabetes.53.8.2164>)
- De Franco E 2020 From biology to genes and back again: gene discovery for monogenic forms of beta-cell dysfunction in diabetes. *Journal of Molecular Biology* **432** 1535–1550. (<https://doi.org/10.1016/j.jmb.2019.08.016>)
- De Franco E, Shaw-Smith C, Flanagan SE, Edghill EL, Wolf J, Otte V, Ebinger F, Varthakavi P, Vasanthi T, Edvardsson S, *et al.* 2013 Biallelic PDX1 (insulin promoter factor 1) mutations causing neonatal diabetes without exocrine pancreatic insufficiency. *Diabetic Medicine* **30** e197–e200. (<https://doi.org/10.1111/dme.12122>)
- De Franco E, Flanagan SE, Houghton JA, Allen HL, Mackay DJ, Temple IK, Ellard S & Hattersley AT 2015 The effect of early, comprehensive genomic testing on clinical care in neonatal diabetes: an international cohort study. *Lancet* **386** 957–963. ([https://doi.org/10.1016/S0140-6736\(15\)60098-8](https://doi.org/10.1016/S0140-6736(15)60098-8))
- De Franco E, Flanagan SE, Yagi T, Abreu D, Mahadevan J, Johnson MB, Jones G, Acosta F, Mulaudzi M, Lek N, *et al.* 2017 Dominant ER stress-inducing WFS1 mutations underlie a genetic syndrome of neonatal/infancy-onset diabetes, congenital sensorineural deafness, and congenital cataracts. *Diabetes* **66** 2044–2053. (<https://doi.org/10.2337/db16-1296>)
- De Franco E, Watson RA, Weninger WJ, Wong CC, Flanagan SE, Caswell R, Green A, Tudor C, Lelliott CJ, Geyer SH, *et al.* 2019 A specific CNOT1 mutation results in a novel syndrome of pancreatic agenesis and holoprosencephaly through impaired pancreatic and neurological development. *American Journal of Human Genetics* **104** 985–989. (<https://doi.org/10.1016/j.ajhg.2019.03.018>)
- De Franco E, Caswell R, Johnson MB, Wakeling MN, Zung A, Chí Dũng VC, Bích Ngọc CT, Goonetilke R, Vivanco Jury M, El-Khateeb M, *et al.* 2020a De novo mutations in EIF2B1 affecting eIF2 signaling cause neonatal/early onset diabetes and transient hepatic dysfunction. *Diabetes* **69** 477–483. (<https://doi.org/10.2337/db19-1029>)
- De Franco E, Lytrivi M, Ibrahim H, Montaser H, Wakeling MN, Fantuzzi F, Patel K, Demarez C, Cai Y, Igoillo-Esteve M, *et al.* 2020b YIPF5 mutations cause neonatal diabetes and microcephaly through endoplasmic reticulum stress. *Journal of Clinical Investigation* **130** 6338–6353. (<https://doi.org/10.1172/JCI141455>)
- Delépine M, Nicolino M, Barrett T, Golamaully M, Lathrop GM & Julier C 2000 EIF2AK3, encoding translation initiation factor 2-alpha kinase 3, is mutated in patients with Wolcott-Rallison syndrome. *Nature Genetics* **25** 406–409. (<https://doi.org/10.1038/78085>)
- Delvecchio M, Pastore C & Giordano P 2020 Treatment options for MODY patients: a systematic review of literature. *Diabetes Therapy* **11** 1667–1685. (<https://doi.org/10.1007/s13300-020-00864-4>)
- Dimitri P, Warner JT, Minton JA, Patch AM, Ellard S, Hattersley AT, Barr S, Hawkes D, Wales JK & Gregory JW 2011 Novel GLIS3 mutations demonstrate an extended multisystem phenotype. *European Journal of Endocrinology* **164** 437–443. (<https://doi.org/10.1530/EJE-10-0893>)
- Doyle MJ & Sussel L 2007 Nkx2.2 regulates beta-cell function in the mature islet. *Diabetes* **56** 1999–2007. (<https://doi.org/10.2337/db06-1766>)
- Dunne MJ, Kane C, Shepherd RM, Sanchez JA, James RF, Johnson PR, Aynsley-Green A, Lu S, Clement JP, Lindley KJ, *et al.* 1997 Familial persistent hyperinsulinemic hypoglycemia of infancy and mutations in the sulfonylurea receptor. *New England Journal of Medicine* **336** 703–706. (<https://doi.org/10.1056/NEJM199703063361005>)
- Edghill EL, Flanagan SE, Patch AM, Bousted C, Parrish A, Shields B, Shepherd MH, Hussain K, Kapoor RR, Malecki M, *et al.* 2008 Insulin mutation screening in 1044 patients with diabetes: mutations in the INS gene are a common cause of neonatal diabetes but a rare cause of diabetes diagnosed in childhood or adulthood. *Diabetes* **57** 1034–1042. (<https://doi.org/10.2337/db07-1405>)
- Edghill EL, Khamis A, Weedon MN, Walker M, Hitman GA, McCarthy MI, Owen KR, Ellard S, T Hattersley A & Frayling TM 2011 Sequencing PDX1 (insulin promoter factor 1) in 1788 UK individuals found 5% had a low frequency coding variant, but these variants are not associated with Type 2 diabetes. *Diabetic Medicine* **28** 681–684. (<https://doi.org/10.1111/j.1464-5491.2011.03269.x>)
- Ellard S, Bellanné-Chantelot C, Hattersley AT & European Molecular Genetics Quality Network (EMQN) 2008 Best practice guidelines for the molecular genetic diagnosis of maturity-onset diabetes of the young. *Diabetologia* **51** 546–553. (<https://doi.org/10.1007/s00125-008-0942-y>)
- Fajans SS 1987 MODY – a model for understanding the pathogenesis and natural history of Type II diabetes. *Hormone and Metabolic Research* **19** 591–599. (<https://doi.org/10.1055/s-2007-1011888>)
- Fajans SS 1990 Scope and heterogeneous nature of MODY. *Diabetes Care* **13** 49–64. (<https://doi.org/10.2337/diacare.13.1.49>)
- Fajans SS & Brown MB 1993 Administration of sulfonylureas can increase glucose-induced insulin secretion for decades in patients With maturity-onset diabetes of the young. *Diabetes Care* **16** 1254–1261. (<https://doi.org/10.2337/diacare.16.9.1254>)
- Fajans SS & Conn JW 1959 The early recognition of diabetes mellitus. *Annals of the New York Academy of Sciences* **82** 208–218. (<https://doi.org/10.1111/j.1749-6632.1959.tb44901.x>)
- Firdous P, Nissar K, Ali S, Ganai BA, Shabir U, Hassan T & Masoodi SR 2018 Genetic testing of maturity-onset diabetes of the young current status and future perspectives. *Frontiers in Endocrinology* **9** 253. (<https://doi.org/10.3389/fendo.2018.00253>)
- Flanagan SE, Edghill EL, Gloyn AL, Ellard S & Hattersley AT 2006 Mutations in KCNJ11, which encodes Kir6.2, are a common cause of diabetes diagnosed in the first 6 months of life, with the phenotype determined by genotype. *Diabetologia* **49** 1190–1197. (<https://doi.org/10.1007/s00125-006-0246-z>)
- Flanagan SE, Haapaniemi E, Russell MA, Caswell R, Allen HL, De Franco E, McDonald TJ, Rajala H, Ramelius A, Barton J, *et al.* 2014 Activating germline mutations in STAT3 cause early-onset multi-organ autoimmune disease. *Nature Genetics* **46** 812–814. (<https://doi.org/10.1038/ng.3040>)
- Froguel P, Vaxillaire M, Sun F, Velho G, Zouali H, Butel MO, Lesage S, Vionnet N, Clément K & Fougere F 1992 Close linkage of glucokinase locus on chromosome 7p to early-onset non-insulin-

- dependent diabetes mellitus. *Nature* **356** 162–164. (<https://doi.org/10.1038/356162a0>)
- Fukuda A, Kawaguchi Y, Furuyama K, Kodama S, Horiguchi M, Kuhara T, Kawaguchi M, Terao M, Doi R, Wright CVE, et al. 2008 Reduction of Ptf1a gene dosage causes pancreatic hypoplasia and diabetes in mice. *Diabetes* **57** 2421–2431. (<https://doi.org/10.2337/db07-1558>)
- Garin I, Edghill EL, Akerman I, Rubio-Cabezas O, Rica I, Locke JM, Maestro MA, Alshaikh A, Bundak R, del Castillo G, et al. 2010 Recessive mutations in the INS gene result in neonatal diabetes through reduced insulin biosynthesis. *PNAS* **107** 3105–3110. (<https://doi.org/10.1073/pnas.0910533107>)
- Glaser B, Kesavan P, Heyman M, Davis E, Cuesta A, Buchs A, Stanley CA, Thornton PS, Permutt MA, Matschinsky FM, et al. 1998 Familial hyperinsulinism caused by an activating glucokinase mutation. *New England Journal of Medicine* **338** 226–230. (<https://doi.org/10.1056/NEJM199801223380404>)
- Gloyn AL 2003 Glucokinase (GCK) mutations in hyper- and hypoglycemia: maturity-onset diabetes of the young, permanent neonatal diabetes, and hyperinsulinemia of infancy. *Human Mutation* **22** 353–362. (<https://doi.org/10.1002/humu.10277>)
- Gloyn AL, Weedon MN, Owen KR, Turner MJ, Knight BA, Hitman G, Walker M, Levy JC, Sampson M, Halford S, et al. 2003 Large-scale association studies of variants in genes encoding the pancreatic  $\beta$ -cell KATP channel subunits Kir6.2 (KCNJ11) and SUR1 (ABCC8) confirm that the KCNJ11 E23K variant is associated with type 2 diabetes. *Diabetes* **52** 568–572. (<https://doi.org/10.2337/diabetes.52.2.568>)
- Gloyn AL, Cummings EA, Edghill EL, Harries LW, Scott R, Costa T, Temple IK, Hattersley AT & Ellard S 2004a Permanent neonatal diabetes due to paternal germline mosaicism for an activating mutation of the KCNJ11 gene encoding the Kir6.2 subunit of the beta-cell potassium adenosine triphosphate channel. *Journal of Clinical Endocrinology and Metabolism* **89** 3932–3935. (<https://doi.org/10.1210/jc.2004-0568>)
- Gloyn AL, Pearson ER, Antcliff JF, Proks P, Bruining GJ, Slingerland AS, Howard N, Srinivasan S, Silva JMCL, Molnes J, et al. 2004b Activating mutations in the gene encoding the ATP-sensitive potassium-channel subunit Kir6.2 and permanent neonatal diabetes. *New England Journal of Medicine* **350** 1838–1849. (<https://doi.org/10.1056/NEJMoa032922>)
- Gloyn AL, Odili S, Buettger C, Njolstad PR, Shiota C, Magnuson MA & Matschinsky FM 2004c Glucokinase and the regulation of blood sugar. *Glucokinase and Glycemic Disease: From Basics to Novel Therapeutics* **16** 92–109. (<https://doi.org/10.1159/000079009>)
- Gloyn AL, Reimann F, Girard C, Edghill EL, Proks P, Pearson ER, Temple IK, Mackay DJG, Shield JPH, Freedenberg D, et al. 2005 Relapsing diabetes can result from moderately activating mutations in KCNJ11. *Human Molecular Genetics* **14** 925–934. (<https://doi.org/10.1093/hmg/ddi086>)
- Gloyn AL, Diatloff-Zito C, Edghill EL, Bellanné-Chantelot C, Nivot S, Coutant R, Ellard S, Hattersley AT & Robert JJ 2006 KCNJ11 activating mutations are associated with developmental delay, epilepsy and neonatal diabetes syndrome and other neurological features. *European Journal of Human Genetics* **14** 824–830. (<https://doi.org/10.1038/sj.ejhg.5201629>)
- Grant SFA, Thorleifsson G, Reynisdottir I, Benediktsson R, Manolescu A, Sainz J, Helgason A, Stefansson H, Emilsson V, Helgadóttir A, et al. 2006 Variant of transcription factor 7-like 2 (TCF7L2) gene confers risk of type 2 diabetes. *Nature Genetics* **38** 320–323. (<https://doi.org/10.1038/ng1732>)
- Gruppuso PA, Gorden P, Kahn CR, Cornblath M, Zeller WP & Schwartz R 1984 Familial hyperproinsulinemia due to a proposed defect in conversion of proinsulin to insulin. *New England Journal of Medicine* **311** 629–634. (<https://doi.org/10.1056/NEJM198409063110003>)
- Harries LW, Hattersley AT & Ellard S 2004 Messenger RNA transcripts of the hepatocyte nuclear factor-1alpha gene containing premature termination codons are subject to nonsense-mediated decay. *Diabetes* **53** 500–504. (<https://doi.org/10.2337/diabetes.53.2.500>)
- Hattersley AT, Turner RC, Patel P, O'Rahilly S, Hattersley AT, Patel P, Wainscoat JS, Permutt MA, Tanazawa Y, Chin KC, et al. 1992 Linkage of type 2 diabetes to the glucokinase gene. *Lancet* **339** 1307–1310. ([https://doi.org/10.1016/0140-6736\(92\)91958-B](https://doi.org/10.1016/0140-6736(92)91958-B))
- Hattersley AT, Greeley SAW, Polak M, Rubio-Cabezas O, Njolstad PR, Mlynarski W, Castano L, Carlsson A, Raile K, Chi DV, et al. 2018 ISPAD Clinical Practice Consensus Guidelines 2018: the diagnosis and management of monogenic diabetes in children and adolescents. *Pediatric Diabetes* **19** (Supplement 27) 47–63. (<https://doi.org/10.1111/pedi.12772>)
- Hodish I, Liu M, Rajpal G, Larkin D, Holz RW, Adams A, Liu L & Arvan P 2010 Misfolded proinsulin affects bystander proinsulin in neonatal diabetes. *Journal of Biological Chemistry* **285** 685–694. (<https://doi.org/10.1074/jbc.M109.038042>)
- Horikawa Y, Iwasaki N, Hara M, Furuta H, Hinokio Y, Cockburn BN, Lindner T, Yamagata K, Ogata M, Tomonaga O, et al. 1997 Mutation in hepatocyte nuclear factor-1 beta gene (TCF2) associated with MODY. *Nature Genetics* **17** 384–385. (<https://doi.org/10.1038/ng1297-384>)
- Hui H & Perfetti R 2002 Pancreas duodenum homeobox-1 regulates pancreas development during embryogenesis and islet cell function in adulthood. *European Journal of Endocrinology* **146** 129–141. (<https://doi.org/10.1530/eje.0.1460129>)
- Huopio H, Reimann F, Ashfield R, Komulainen J, Lenko HL, Rahier J, Vauhkonen I, Kere J, Laakso M, Ashcroft F, et al. 2000 Dominantly inherited hyperinsulinism caused by a mutation in the sulfonylurea receptor type 1. *Journal of Clinical Investigation* **106** 897–906. (<https://doi.org/10.1172/JCI9804>)
- Inoue H, Riggs AC, Tanizawa Y, Ueda K, Kuwano A, Liu L, Donis-Keller H & Permutt MA 1996 Isolation, characterization, and chromosomal mapping of the human insulin promoter factor 1 (IPF-1) gene. *Diabetes* **45** 789–794. (<https://doi.org/10.2337/diab.45.6.789>)
- Johnson MB, De Franco E, Lango-Allen H, Al Senani A, Elbarbary N, Siklar Z, Berberoglu M, Imane Z, Haghghi A, Razavi Z, et al. 2017 Recessively inherited LRBA mutations cause autoimmunity presenting as neonatal diabetes. *Diabetes* **66** 2316–2322. (<https://doi.org/10.2337/db17-0040>)
- Jonsson J, Carlsson L, Edlund T & Edlund H 1994 Insulin-promoter-factor 1 is required for pancreas development in mice. *Nature* **371** 606–609. (<https://doi.org/10.1038/371606a0>)
- Kane C, Shepherd RM, Squires PE, Johnson PR, James RF, Milla PJ, Aynsley-Green A, Lindley KJ & Dunne MJ 1996 Loss of functional KATP channels in pancreatic beta-cells causes persistent hyperinsulinemic hypoglycemia of infancy. *Nature Medicine* **2** 1344–1347. (<https://doi.org/10.1038/nm1296-1344>)
- Kang HS, Kim YS, ZeRuth G, Beak JY, Gerrish K, Kilic G, Sosa-Pineda B, Jensen J, Pierreux CE, Lemaigre FP, et al. 2009 Transcription factor Glis3, a novel critical player in the regulation of pancreatic beta-cell development and insulin gene expression. *Molecular and Cellular Biology* **29** 6366–6379. (<https://doi.org/10.1128/MCB.01259-09>)
- Kathiresan S, Willer CJ, Peloso GM, Demissie S, Musunuru K, Schadt EE, Kaplan L, Bennett D, Li Y, Tanaka T, et al. 2009 Common variants at 30 loci contribute to polygenic dyslipidemia. *Nature Genetics* **41** 56–65. (<https://doi.org/10.1038/ng.291>)
- Kim JW, Seghers V, Cho JH, Kang Y, Kim S, Ryu Y, Baek K, Aguilar-Bryan L, Lee YD, Bryan J, et al. 2002 Transactivation of the mouse sulfonylurea receptor I gene by BETA2/NeuroD. *Molecular Endocrinology* **16** 1097–1107. (<https://doi.org/10.1210/mend.16.5.0934>)
- Kristinsson SY, Thorolfsdottir ET, Talseth B, Steingrimsdottir E, Thorsson AV, Helgason T, Hreidarsson AB & Arngrimsson R 2001 MODY in Iceland is associated with mutations in HNF-1 $\alpha$  and a novel mutation in NeuroD1. *Diabetologia* **44** 2098–2103. (<https://doi.org/10.1007/s001250100016>)
- Lander ES, Linton LM, Birren B, Nusbaum C, Zody MC, Baldwin J, Devon K, Dewar K, Doyle M, FitzHugh W, et al. 2001 Initial sequencing and analysis of the human genome. *Nature* **409** 860–921. (<https://doi.org/10.1038/35057062>)
- Lee BC, Appleton M, Shore AC, Tooke JE & Hattersley AT 1999 Impaired maximum microvascular hyperaemia in patients with MODY 3



- (hepatocyte nuclear factor-1alpha gene mutations). *Diabetic Medicine* **16** 731–735. (<https://doi.org/10.1046/j.1464-5491.1999.00129.x>)
- Letourneau LR & Greeley SAW 2018 Congenital forms of diabetes: the beta-cell and beyond. *Current Opinion in Genetics and Development* **50** 25–34. (<https://doi.org/10.1016/j.gde.2018.01.005>)
- Liu M, Hodish I, Haataja L, Lara-Lemus R, Rajpal G, Wright J & Arvan P 2010 Proinsulin misfolding and diabetes: mutant INS gene-induced diabetes of youth. *Trends in Endocrinology and Metabolism* **21** 652–659. (<https://doi.org/10.1016/j.tem.2010.07.001>)
- Liu M, Lara-Lemus R, Shan SO, Wright J, Haataja L, Barbetti F, Guo H, Larkin D & Arvan P 2012 Impaired cleavage of preproinsulin signal peptide linked to autosomal-dominant diabetes. *Diabetes* **61** 828–837. (<https://doi.org/10.2337/db11-0878>)
- Magnuson MA, Andreone TL, Printz RL, Koch S & Granner DK 1989 Rat glucokinase gene: structure and regulation by insulin. *PNAS* **86** 4838–4842. (<https://doi.org/10.1073/pnas.86.13.4838>)
- Mahajan A, Taliun D, Thurner M, Robertson NR, Torres JM, Rayner NW, Payne AJ, Steinthorsdottir V, Scott RA, Grarup N, *et al.* 2018 Fine-mapping type 2 diabetes loci to single-variant resolution using high-density imputation and islet-specific epigenome maps. *Nature Genetics* **50** 1505–1513. (<https://doi.org/10.1038/s41588-018-0241-6>)
- Malecki MT, Jhala US, Antonellis A, Fields L, Doria A, Orban T, Saad M, Warram JH, Montminy M & Krolewski AS 1999 Mutations in NEUROD1 are associated with the development of type 2 diabetes mellitus. *Nature Genetics* **23** 323–328. (<https://doi.org/10.1038/15500>)
- Marsich E, Vetere A, Di Piazza M, Tell G & Paoletti S 2003 The PAX6 gene is activated by the basic helix-loop-helix transcription factor NeuroD/BETA2. *Biochemical Journal* **376** 707–715. (<https://doi.org/10.1042/BJ20031021>)
- McDonald TJ & Ellard S 2013 Maturity onset diabetes of the young: identification and diagnosis. *Annals of Clinical Biochemistry* **50** 403–415. (<https://doi.org/10.1177/0004563213483458>)
- Mendel DB, Hansen LP, Graves MK, Conley PB & Crabtree GR 1991 HNF-1 alpha and HNF-1 beta (vHNF-1) share dimerization and homeo domains, but not activation domains, and form heterodimers in vitro. *Genes and Development* **5** 1042–1056. (<https://doi.org/10.1101/gad.5.6.1042>)
- Misra S, Hassanali N, Bennett AJ, Juszczak A, Caswell R, Colclough K, Valabhji J, Ellard S, Oliver NS & Gloyn AL 2020 Homozygous hypomorphic HNF1A alleles are a novel cause of young-onset diabetes and result in sulfonylurea-sensitive diabetes. *Diabetes Care* **43** 909–912. (<https://doi.org/10.2337/dc19-1843>)
- Moates JM, Nanda S, Cissell MA, Tsai MJ & Stein R 2003 BETA2 activates transcription from the upstream glucokinase gene promoter in islet beta-cells and gut endocrine cells. *Diabetes* **52** 403–408. (<https://doi.org/10.2337/diabetes.52.2.403>)
- Ng NHJ, Willems SM, Fernandez J, Fine RS, Wheeler E, Wessel J, Kitajima H, Marenne G, Rundle JK, Sim X, *et al.* 2019 Tissue-specific alteration of metabolic pathways influences glycaemic regulation. *bioRxiv* [In press] 790618. (<https://doi.org/10.1101/790618>)
- Nichols CG, Shyng SL, Nestorowicz A, Glaser B, Clement JP, Gonzalez G, Aguilar-Bryan L, Permutt MA & Bryan J 1996 Adenosine diphosphate as an intracellular regulator of insulin secretion. *Science* **272** 1785–1787. (<https://doi.org/10.1126/science.272.5269.1785>)
- Njølstaad PR, Sovik O, Cuesta-Muñoz A, Bjørkhaug L, Massa O, Barbetti F, Undlien DE, Shiota C, Magnuson MA, Molven A, *et al.* 2001 Neonatal diabetes mellitus due to complete glucokinase deficiency. *New England Journal of Medicine* **344** 1588–1592. (<https://doi.org/10.1056/NEJM200105243442104>)
- Njølstaad PR, Sagen JV, Bjørkhaug L, Odili S, Shehadeh N, Bakry D, Sarici SU, Alpay F, Molnes J, Molven A, *et al.* 2003 Permanent neonatal diabetes caused by glucokinase deficiency: inborn error of the glucose-insulin signaling pathway. *Diabetes* **52** 2854–2860. (<https://doi.org/10.2337/diabetes.52.11.2854>)
- Pearson ER, Starkey BJ, Powell RJ, Gribble FM, Clark PM & Hattersley AT 2003 Genetic cause of hyperglycaemia and response to treatment in diabetes. *Lancet* **362** 1275–1281. ([https://doi.org/10.1016/S0140-6736\(03\)14571-0](https://doi.org/10.1016/S0140-6736(03)14571-0))
- Pearson ER, Badman MK, Lockwood CR, Clark PM, Ellard S, Bingham C & Hattersley AT 2004 Contrasting diabetes phenotypes associated with hepatocyte nuclear factor-1alpha and -1beta mutations. *Diabetes Care* **27** 1102–1107. (<https://doi.org/10.2337/diacare.27.5.1102>)
- Pearson ER, Pruhova S, Tack CJ, Johansen A, Castleden HA, Lumb PJ, Wierzbicki AS, Clark PM, Lebl J, Pedersen O, *et al.* 2005 Molecular genetics and phenotypic characteristics of MODY caused by hepatocyte nuclear factor 4alpha mutations in a large European collection. *Diabetologia* **48** 878–885. (<https://doi.org/10.1007/s00125-005-1738-y>)
- Pontoglio M, Prié D, Cheret C, Doyen A, Leroy C, Froguel P, Velho G, Yaniv M & Friedlander G 2000 HNF1alpha controls renal glucose reabsorption in mouse and man. *EMBO Reports* **1** 359–365. (<https://doi.org/10.1093/embo-reports/kvd071>)
- Raeder H, Johansson S, Holm PI, Haldorsen IS, Mas E, Sbarra V, Nerøen I, Eide SA, Grevle L, Bjørkhaug L, *et al.* 2006 Mutations in the CEL VNTR cause a syndrome of diabetes and pancreatic exocrine dysfunction. *Nature Genetics* **38** 54–62. (<https://doi.org/10.1038/ng1708>)
- Ræder H, McAllister FE, Tjora E, Bhatt S, Haldorsen I, Hu J, Willems SM, Vesterhus M, El Ouaamari A, Liu M, *et al.* 2014 Carboxyl-ester lipase maturity-onset diabetes of the young is associated with development of pancreatic cysts and upregulated MAPK signaling in secretin-stimulated duodenal fluid. *Diabetes* **63** 259–269. (<https://doi.org/10.2337/db13-1012>)
- Raimondo A, Chakera AJ, Thomsen SK, Colclough K, Barrett A, De Franco E, Chatelas A, Demirbilek H, Akcay T, Alawneh H, *et al.* 2014 Phenotypic severity of homozygous GCK mutations causing neonatal or childhood-onset diabetes is primarily mediated through effects on protein stability. *Human Molecular Genetics* **23** 6432–6440. (<https://doi.org/10.1093/hmg/ddu360>)
- Rubio-Cabezas O, Patch AM, Minton JAL, Flanagan SE, Edghill EL, Hussain K, Balafrej A, Deeb A, Buchanan CR, Jefferson IG, *et al.* 2009 Wolcott-Rallison syndrome is the most common genetic cause of permanent neonatal diabetes in consanguineous families. *Journal of Clinical Endocrinology and Metabolism* **94** 4162–4170. (<https://doi.org/10.1210/jc.2009-1137>)
- Rubio-Cabezas O, Minton JAL, Kantor I, Williams D, Ellard S & Hattersley AT 2010 Homozygous mutations in NEUROD1 are responsible for a novel syndrome of permanent neonatal diabetes and neurological abnormalities. *Diabetes* **59** 2326–2331. (<https://doi.org/10.2337/db10-0011>)
- Sagen JV, Raeder H, Hathout E, Shehadeh N, Gudmundsson K, Baevre H, Abuelo D, Phornphutkul C, Molnes J, Bell GI, *et al.* 2004 Permanent neonatal diabetes due to mutations in KCNJ11 encoding Kir6.2: patient characteristics and initial response to sulfonylurea therapy. *Diabetes* **53** 2713–2718. (<https://doi.org/10.2337/diabetes.53.10.2713>)
- Senée V, Chelala C, Duchatelet S, Feng D, Blanc H, Cossec JC, Charon C, Nicolino M, Boileau P, Cavener DR, *et al.* 2006 Mutations in GLIS3 are responsible for a rare syndrome with neonatal diabetes mellitus and congenital hypothyroidism. *Nature Genetics* **38** 682–687. (<https://doi.org/10.1038/ng1802>)
- Shield JPH 2000 Neonatal diabetes: new insights into aetiology and implications. *Hormone Research* **53** (Supplement 1) 7–11. (<https://doi.org/10.1159/000053198>)
- Shields BM, Hicks S, Shepherd MH, Colclough K, Hattersley AT & Ellard S 2010 Maturity-onset diabetes of the young (MODY): how many cases are we missing? *Diabetologia* **53** 2504–2508. (<https://doi.org/10.1007/s00125-010-1799-4>)
- Shimomura K & Maejima Y 2017 KATP channel mutations and neonatal diabetes. *Internal Medicine* **56** 2387–2393. (<https://doi.org/10.2169/internalmedicine.8454-16>)
- SIGMA Type 2 Diabetes Consortium, Estrada K, Aukrust I, Bjørkhaug L, Burtt NP, Mercader JM, García-Ortiz H, Huerta-Chagoya A, Moreno-Macias H, Walford G, *et al.* 2014 Association of a low-frequency variant



- in HNF1A with type 2 diabetes in a Latino population. *JAMA* **311** 2305–2314. (<https://doi.org/10.1001/jama.2014.6511>)
- Siontis KCM, Patsopoulos NA & Ioannidis JPA 2010 Replication of past candidate loci for common diseases and phenotypes in 100 genome-wide association studies. *European Journal of Human Genetics* **18** 832–837. (<https://doi.org/10.1038/ejhg.2010.26>)
- Smith SB, Qu HQ, Taleb N, Kishimoto NY, Scheel DW, Lu Y, Patch AM, Grabs R, Wang J, Lynn FC, *et al.* 2010 Rfx6 directs islet formation and insulin production in mice and humans. *Nature* **463** 775–780. (<https://doi.org/10.1038/nature08748>)
- Stanescu DE, Hughes N, Patel P & De Leon DD 2015 A novel mutation in GATA6 causes pancreatic agenesis. *Pediatric Diabetes* **16** 67–70. (<https://doi.org/10.1111/pedi.12111>)
- Steele AM, Shields BM, Wensley KJ, Colclough K, Ellard S & Hattersley AT 2014 Prevalence of vascular complications among patients with glucokinase mutations and prolonged, mild hyperglycemia. *JAMA* **311** 279–286. (<https://doi.org/10.1001/jama.2013.283980>)
- Stoffel M, Froguel P, Takeda J, Zouali H, Vionnet N, Nishi S, Weber IT, Harrison RW, Pilkis SJ & Lesage S 1992 Human glucokinase gene: isolation, characterization, and identification of two missense mutations linked to early-onset non-insulin-dependent (type 2) diabetes mellitus. *PNAS* **89** 7698–7702. (<https://doi.org/10.1073/pnas.89.16.7698>)
- Stoffel M, Stein R, Wright CV, Espinosa R, Le Beau MM & Bell GI 1995 Localization of human homeodomain transcription factor insulin promoter factor 1 (IPF1) to chromosome band 13q12.1. *Genomics* **28** 125–126. (<https://doi.org/10.1006/geno.1995.1120>)
- Stoffers DA, Ferrer J, Clarke WL & Habener JF 1997a Early-onset type-II diabetes mellitus (MODY4) linked to Ip1. *Nature Genetics* **17** 138–139. (<https://doi.org/10.1038/ng1097-138>)
- Stoffers DA, Zinkin NT, Stanojevic V, Clarke WL & Habener JF 1997b Pancreatic agenesis attributable to a single nucleotide deletion in the human Ip1 gene coding sequence. *Nature Genetics* **15** 106–110. (<https://doi.org/10.1038/ng0197-106>)
- Støy J, Edghill EL, Flanagan SE, Ye H, Paz VP, Pluzhnikov A, Below JE, Hayes MG, Cox NJ, Lipkind GM, *et al.* 2007 Insulin gene mutations as a cause of permanent neonatal diabetes. *PNAS* **104** 15040–15044. (<https://doi.org/10.1073/pnas.0707291104>)
- Stride A, Vaxillaire M, Tuomi T, Barbetti F, Njølstad PR, Hansen T, Costa A, Conget I, Pedersen O, Søvik O, *et al.* 2002 The genetic abnormality in the beta cell determines the response to an oral glucose load. *Diabetologia* **45** 427–435. (<https://doi.org/10.1007/s00125-001-0770-9>)
- Tammaro P, Girard C, Molnes J, Njølstad PR & Ashcroft FM 2005 Kir6.2 mutations causing neonatal diabetes provide new insights into Kir6.2-SUR1 interactions. *EMBO Journal* **24** 2318–2330. (<https://doi.org/10.1038/sj.emboj.7600715>)
- Tattersall RB 1974 Mild familial diabetes with dominant inheritance. *Quarterly Journal of Medicine* **43** 339–357.
- Tattersall RB & Fajans SS 1975 A difference between the inheritance of classical juvenile-onset and maturity-onset type diabetes of young people. *Diabetes* **24** 44–53. (<https://doi.org/10.2337/diab.24.1.44>)
- Thomas P, Ye Y & Lightner E 1996 Mutation of the pancreatic islet inward rectifier Kir6.2 also leads to familial persistent hyperinsulinemic hypoglycemia of infancy. *Human Molecular Genetics* **5** 1809–1812. (<https://doi.org/10.1093/hmg/5.11.1809>)
- Velho G, Froguel P, Clement K, Pueyo ME, Rakotoambinina B, Zouali H, Passa P, Cohen D & Robert JJ 1992 Primary pancreatic beta-cell secretory defect caused by mutations in glucokinase gene in kindreds of maturity onset diabetes of the young. *Lancet* **340** 444–448. ([https://doi.org/10.1016/0140-6736\(92\)91768-4](https://doi.org/10.1016/0140-6736(92)91768-4))
- Wang J, Elghazi L, Parker SE, Kizilocak H, Asano M, Sussel L & Sosa-Pineda B 2004 The concerted activities of Pax4 and Nkx2.2 are essential to initiate pancreatic beta-cell differentiation. *Developmental Biology* **266** 178–189. (<https://doi.org/10.1016/j.ydbio.2003.10.018>)
- Xuan S & Sussel L 2016 GATA4 and GATA6 regulate pancreatic endoderm identity through inhibition of hedgehog signaling. *Development* **143** 780–786. (<https://doi.org/10.1242/dev.127217>)
- Yamagata K, Furuta H, Oda N, Kaisaki PJ, Menzel S, Cox NJ, Fajans SS, Signorini S, Stoffel M & Bell GI 1996a Mutations in the hepatocyte nuclear factor-4alpha gene in maturity-onset diabetes of the young (MODY1). *Nature* **384** 458–460. (<https://doi.org/10.1038/384458a0>)
- Yamagata K, Oda N, Kaisaki PJ, Menzel S, Furuta H, Vaxillaire M, Southam L, Cox RD, Lathrop GM, Boriraj VV, *et al.* 1996b Mutations in the hepatocyte nuclear factor-1alpha gene in maturity-onset diabetes of the young (MODY3). *Nature* **384** 455–458. (<https://doi.org/10.1038/384455a0>)
- Yang Y, Chang BHJ, Samson SL, Li MV & Chan L 2009. The Krüppel-like zinc finger protein Glis3 directly and indirectly activates insulin gene transcription. *Nucleic Acids Research* **37** 2529–2538. (<https://doi.org/10.1093/nar/gkp122>)
- Yorifuji T, Nagashima K, Kurokawa K, Kawai M, Oishi M, Akazawa Y, Hosokawa M, Yamada Y, Inagaki N & Nakahata T 2005 The C42R mutation in the Kir6.2 (KCNJ11) gene as a cause of transient neonatal diabetes, childhood diabetes, or later-onset, apparently type 2 diabetes mellitus. *The Journal of Clinical Endocrinology and Metabolism* **90** 3174–3178. (<https://doi.org/10.1210/jc.2005-0096>)
- Zhang H, Colclough K, Gloyn AL & Pollin TI 2021 Monogenic diabetes: a gateway to precision medicine in diabetes. *Journal of Clinical Investigation* **131** e142244. (<https://doi.org/10.1172/JCI142244>)

Received in final form 10 May 2021

Accepted 30 June 2021

Accepted Manuscript published online 1 July 2021