

ERRATUM

ERRATUM: GH modulates hepatic epidermal growth factor signaling in the mouse

Lorena González¹, Ma Eugenia Díaz¹, Johanna G Miquet¹, Ana I Sotelo¹, Diego Fernández², Fernando P Dominici¹, Andrzej Bartke³ and Daniel Turyn¹

¹Departamento de Química Biológica, Facultad de Farmacia y Bioquímica, Instituto de Química y Físicoquímica Biológicas (UBA-CONICET), Universidad de Buenos Aires, Buenos Aires, Argentina

²Cátedra de Bioquímica Humana, Facultad de Medicina (UBA), Buenos Aires, Argentina

³Geriatrics Research, Departments of Internal Medicine and Physiology, School of Medicine, Southern Illinois University, Springfield, Illinois, USA

Correspondence should be addressed to F P Dominici or A I Sotelo or J G Miquet or M E Díaz: fdominici@ffyb.uba.ar or aisotelo@ffyb.uba.ar or jmiquet@ffyb.uba.ar or m_euge_diaz@hotmail.com

The authors and journal apologise for an error in the above paper, which appeared in volume 204, part 3, pages 299–309. The error relates to Fig. 6 given on page 306, in which the STAT5 Western-blotting image included in panel C does not correspond to the experiment shown. The corrected Fig. 6 is given in full below.

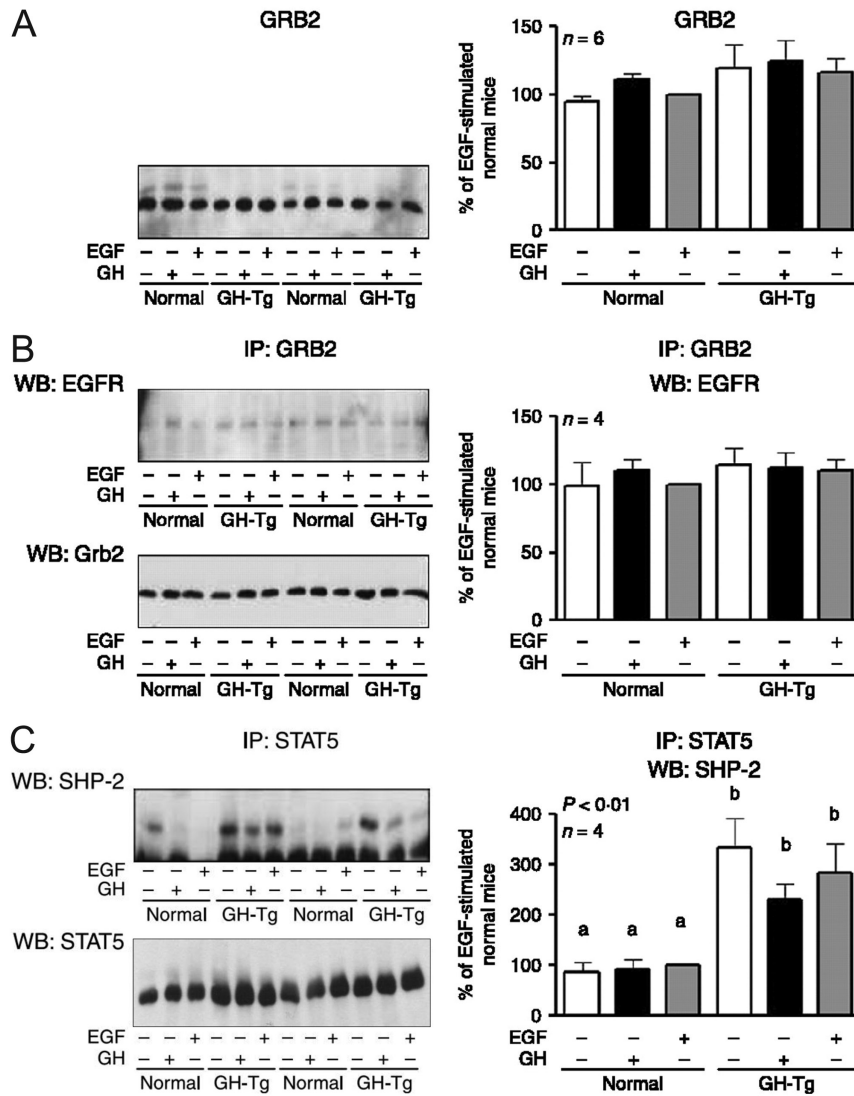


Figure 6

GRB2 content, GRB2/EGFR co-immunoprecipitation, and STAT5/SHP-2 co-immunoprecipitation in normal and GH-overexpressing transgenic mice. Normal and PEPCK-bGH transgenic mice (GH-Tg) were injected i.p. with saline, GH (2.5 mg/kg BW), or EGF (2 mg/kg BW), killed after 7.5 or 10 min, respectively, and the livers were removed. Equal amounts of solubilized liver protein were separated by SDS-PAGE and subjected to immunoblot analysis with anti-Grb2 (A) or were immunoprecipitated with anti-Grb2 or anti-STAT5 antibodies, separated by SDS-PAGE and subjected to immunoblot analysis with anti-EGFR and anti-Grb2 (B) or anti-SHP2 and anti-STAT5 (C) respectively. Representative results of immunoblots are shown. The amount of immunoprecipitated protein was determined by immunoblotting with the corresponding antibody. Quantification was performed by scanning densitometry and expressed as percent of values measured for EGF-stimulated normal mice. Data are the mean \pm s.e.m. of the indicated number of subsets (*n*) of different individuals. Different letters denote significant difference at $P < 0.05$. Representative results from two samples per experimental condition are shown.