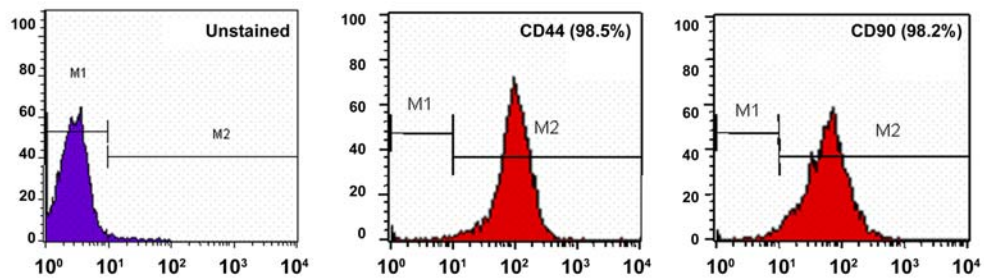


Supplementary figure 1. Human pancreatic islet-derived fibroblast-like cells express mesenchymal markers: CD44 and CD 90.



Freshly isolated islets were exposed to Trypsin, immunostained or exposed to blocking buffer only and then taken to the flow cytometer (BD Canto II). Majority of the cells express CD44 as well as CD90.