

SUPPLEMENTARY FIGURES

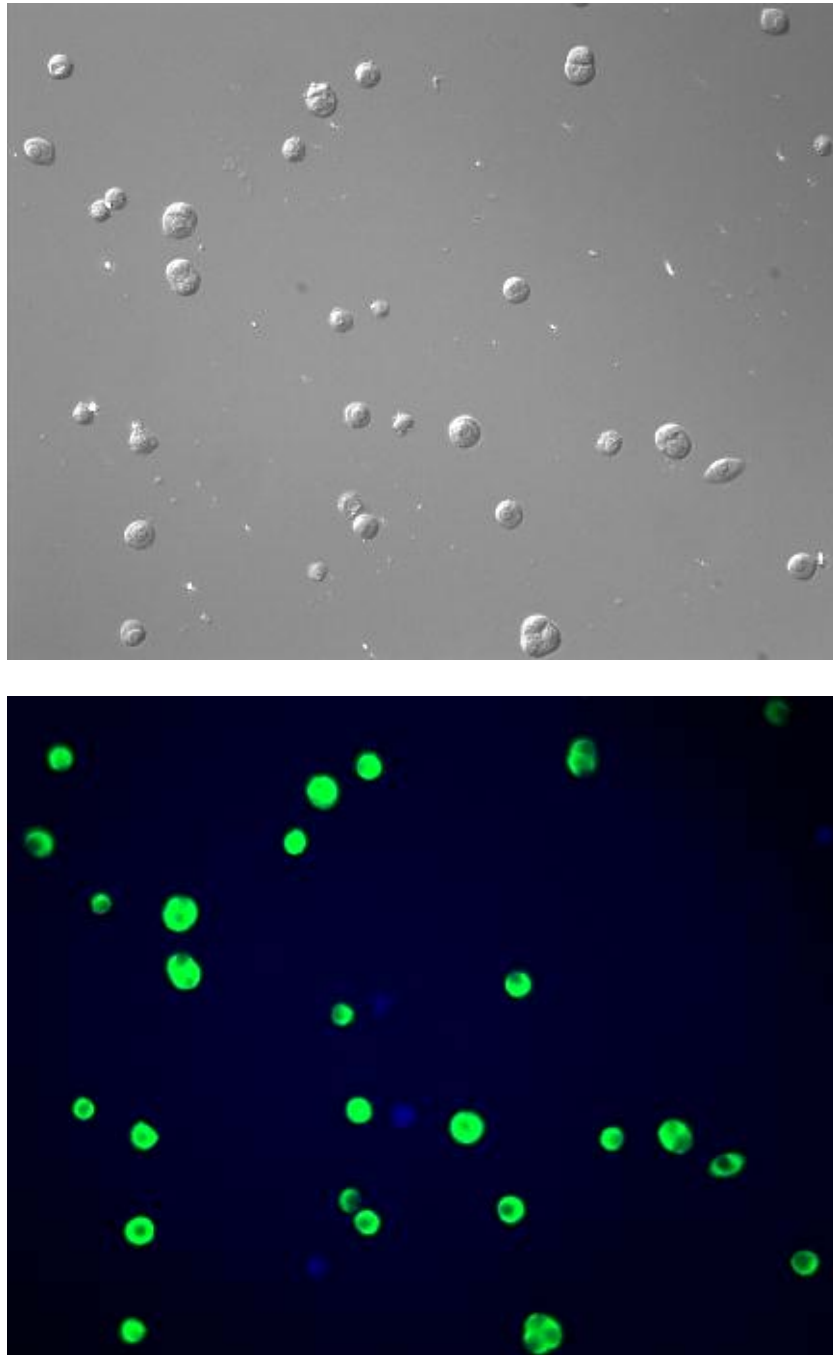


Figure S1

Immunostained fluorescent image (bottom) of dispersed islet cells showing co-localization of insulin and glucagon staining. Insulin-positive (green) cells represent beta-cells, and glucagon-positive (blue) cells represent alpha-cells. Note that the population of larger cells represents beta-cells. Light image is shown at top.

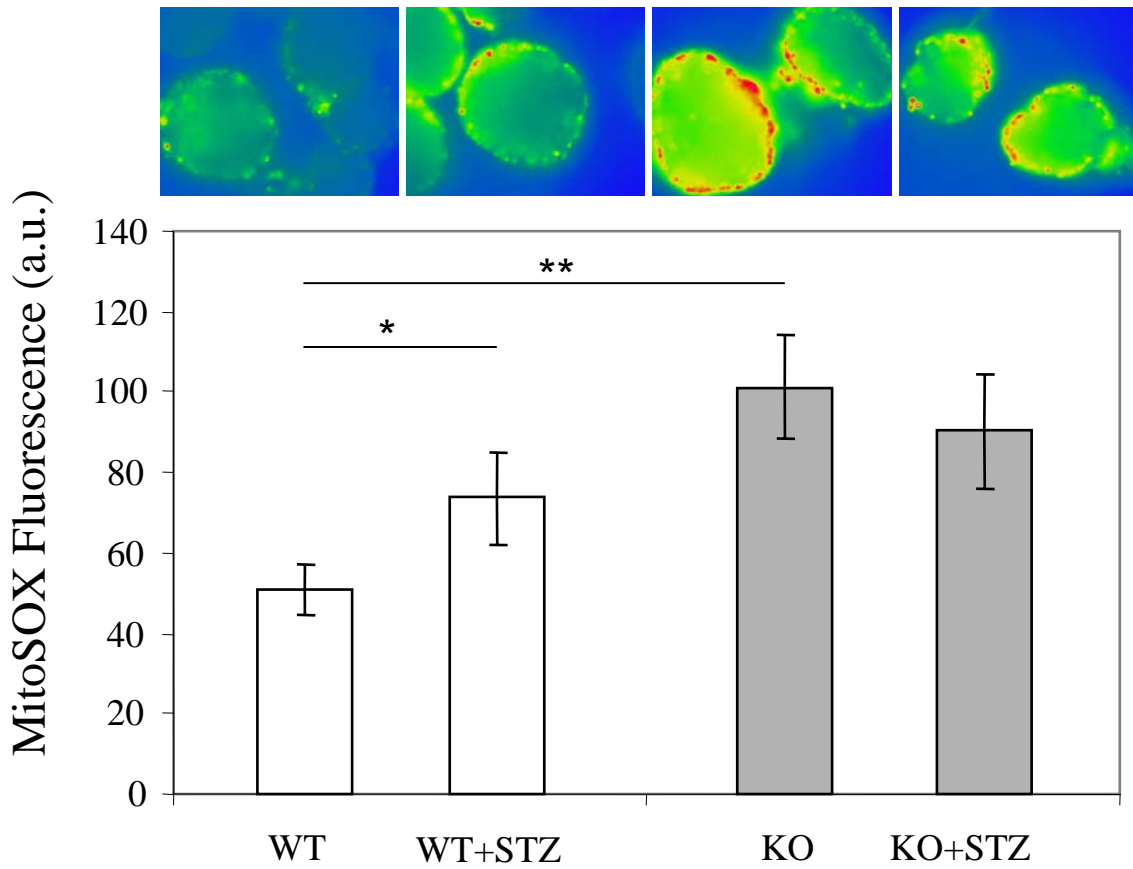


Figure S2

MitoSOX measurement of ROS in isolated islets cultured in medium containing 100uM STZ for 16 hours. (Control - no STZ treatment). Islets were the loaded with the mitochondrial-specific superoxide-sensitive fluorescent probe mitoSOX, and ROS levels quantified using a fluorescent microscope. n=3; *p<0.05; **p<0.01. Shown above the bar graph are representative fluorescent images from each group.