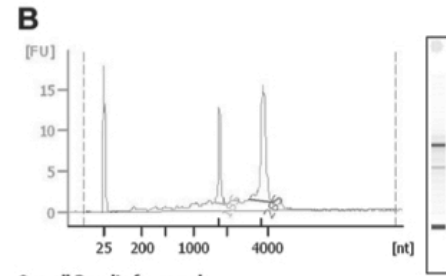


Overall Results for sample
 RNA Area: 204.5
 RNA Concentration: 110 ng/ul
 rRNA Ratio [28s / 18s]: 1.5
 RNA Integrity Number (RIN): 8.6 (B.02.07)
 Result Flagging Color:
 Result Flagging Label: RIN: 8.60

Fragment table for sample

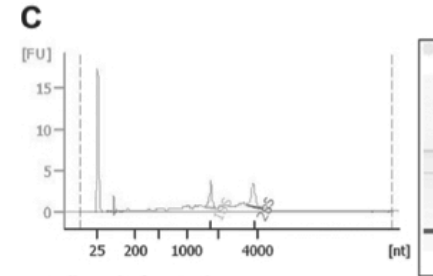
Name	Start Size [nt]	End Size [nt]	Area	% of total Area
18S	1,519	1,997	36.5	17.8
28S	2,886	4,064	54.2	26.5



Overall Results for sample
 RNA Area: 85.6
 RNA Concentration: 46 ng/ul
 rRNA Ratio [28s / 18s]: 2.2
 RNA Integrity Number (RIN): 8.5 (B.02.07)
 Result Flagging Color:
 Result Flagging Label: RIN: 8.50

Fragment table for sample

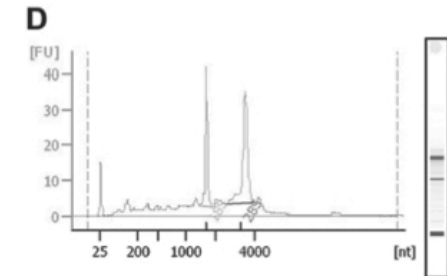
Name	Start Size [nt]	End Size [nt]	Area	% of total Area
18S	1,636	1,991	11.4	13.3
28S	3,124	4,309	25.2	29.4



Overall Results for sample
 RNA Area: 38.5
 RNA Concentration: 21 ng/ul
 rRNA Ratio [28s / 18s]: 1.2
 RNA Integrity Number (RIN): 8 (B.02.07)
 Result Flagging Color:
 Result Flagging Label: RIN: 8

Fragment table for sample

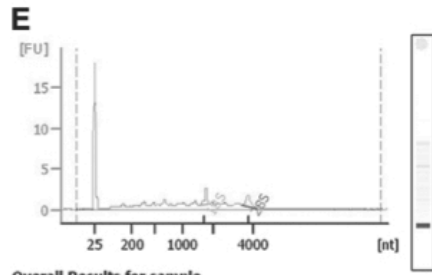
Name	Start Size [nt]	End Size [nt]	Area	% of total Area
18S	1,557	1,968	3.9	10.0
28S	3,422	4,189	4.8	12.4



Overall Results for sample
 RNA Area: 301.0
 RNA Concentration: 161 ng/ul
 rRNA Ratio [28s / 18s]: 1.8
 RNA Integrity Number (RIN): 7.8 (B.02.07)
 Result Flagging Color:
 Result Flagging Label: RIN: 7.80

Fragment table for sample

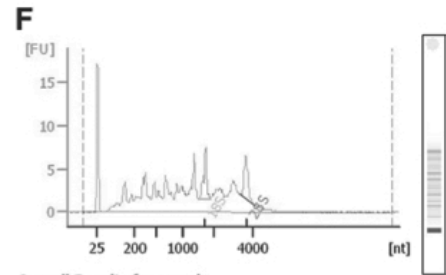
Name	Start Size [nt]	End Size [nt]	Area	% of total Area
18S	1,476	1,880	38.0	12.6
28S	2,559	4,017	66.6	22.1



Overall Results for sample
 RNA Area: 46.2
 RNA Concentration: 25 ng/ul
 rRNA Ratio [28s / 18s]: 1.0
 RNA Integrity Number (RIN): 6.7 (B.02.07)
 Result Flagging Color:
 Result Flagging Label: RIN: 6.70

Fragment table for sample

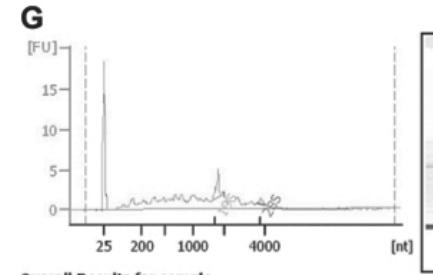
Name	Start Size [nt]	End Size [nt]	Area	% of total Area
18S	1,545	1,913	2.4	5.2
28S	3,529	4,213	2.4	5.3



Overall Results for sample
 RNA Area: 159.6
 RNA Concentration: 85 ng/ul
 rRNA Ratio [28s / 18s]: 1.0
 RNA Integrity Number (RIN): 6 (B.02.07)
 Result Flagging Color:
 Result Flagging Label: RIN: 6

Fragment table for sample

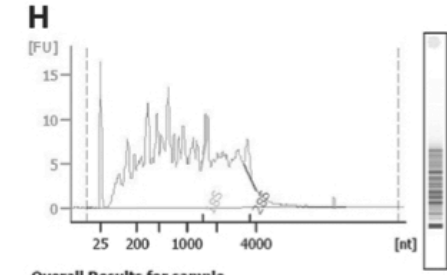
Name	Start Size [nt]	End Size [nt]	Area	% of total Area
18S	1,500	1,890	8.1	5.1
28S	3,382	4,054	8.2	5.1



Overall Results for sample
 RNA Area: 79.7
 RNA Concentration: 43 ng/ul
 rRNA Ratio [28s / 18s]: 0.2
 RNA Integrity Number (RIN): 5.4 (B.02.07)
 Result Flagging Color:
 Result Flagging Label: RIN: 5.40

Fragment table for sample

Name	Start Size [nt]	End Size [nt]	Area	% of total Area
18S	1,584	1,923	4.7	5.9
28S	3,669	4,042	0.9	1.1



Overall Results for sample
 RNA Area: 411.7
 RNA Concentration: 221 ng/ul
 rRNA Ratio [28s / 18s]: 1.9
 RNA Integrity Number (RIN): 3 (B.02.07)
 Result Flagging Color:
 Result Flagging Label: RIN: 3

Fragment table for sample

Name	Start Size [nt]	End Size [nt]	Area	% of total Area
18S	1,474	1,649	3.0	0.7
28S	3,351	3,994	5.9	1.4