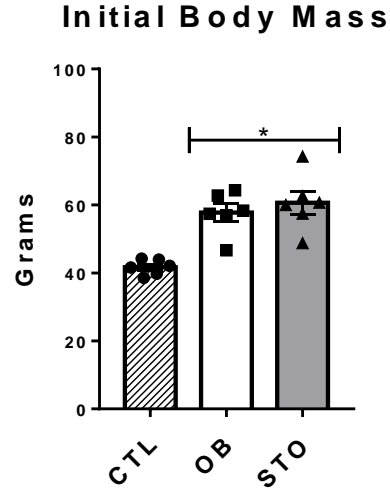


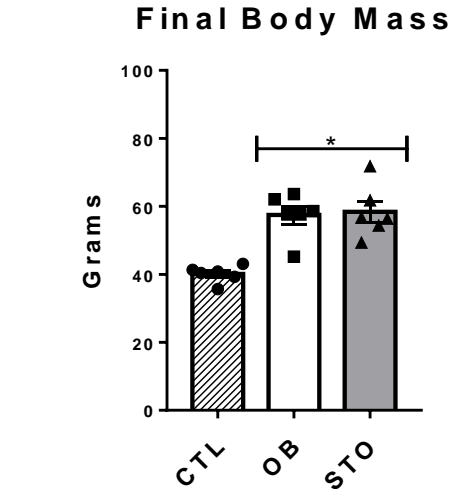
Figure 2A: Initial Body Mass



| | Group A | Group B | Group C |
|--|---------|---------|---------|
| | CTL | OB | STO |
| | Y | Y | Y |
| | 38.6 | 46.7 | 48.8 |
| | 39.8 | 57.0 | 60.0 |
| | 44.2 | 58.3 | 62.6 |
| | 41.6 | 62.8 | 57.5 |
| | 42.1 | 57.4 | 74.3 |
| | 43.9 | 64.3 | 60.7 |

| | | | | | | |
|---|--|------------|--------------------|--------------|---------|------------------|
| 1 | Number of families | 1 | | | | |
| 2 | Number of comparisons per family | 3 | | | | |
| 3 | Alpha | 0.05 | | | | |
| 4 | | | | | | |
| 5 | Bonferroni's multiple comparisons test | Mean Diff. | 95.00% CI of diff. | Significant? | Summary | Adjusted P Value |
| 6 | | | | | | |
| 7 | CTL vs. OB | -16.05 | -25.53 to -6.574 | Yes | ** | 0.0011 |
| 8 | CTL vs. STO | -18.95 | -28.43 to -9.474 | Yes | *** | 0.0002 |
| 9 | OB vs. STO | -2.9 | -12.38 to 6.576 | No | ns | >0.9999 |

Figure 2B: Final Body Mass

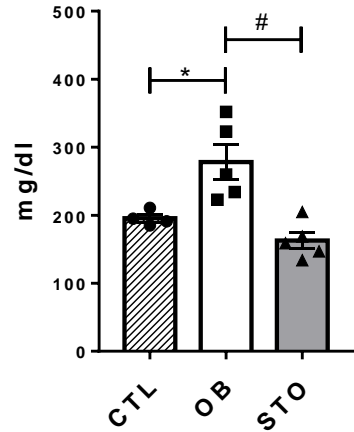


| | CTL | OB | STO |
|--|------|------|------|
| | Y | Y | Y |
| | 35.7 | 45.2 | 49.4 |
| | 39.3 | 57.6 | 56.4 |
| | 43.1 | 58.6 | 61.8 |
| | 40.8 | 63.6 | 54.4 |
| | 40.4 | 57.6 | 71.8 |
| | 41.3 | 62.1 | 56.7 |

| | | | | | | |
|--|----------------------------------|-----------------|--------------|---------|------------------|-----|
| | Number of families | 1 | | | | |
| | Number of comparisons per family | 3 | | | | |
| | Alpha | 0.05 | | | | |
| | | | | | | |
| | Dunn's multiple comparisons test | Mean rank diff. | Significant? | Summary | Adjusted P Value | |
| | | | | | | |
| | CTL vs. OB | -9.667 | Yes | ** | 0.0051 | A-B |
| | CTL vs. STO | -8.333 | Yes | * | 0.0205 | A-C |
| | OB vs. STO | 1.333 | No | ns | >0.9999 | B-C |

Figure 2C: Final Fasting Glucose

Final Fasting Glucose

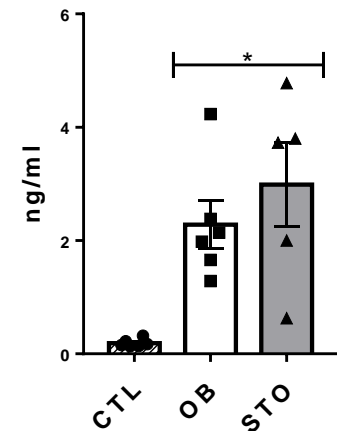


| | CTL | OB | STO |
|---|-----|-----|-----|
| Y | Y | Y | Y |
| | 191 | 234 | 169 |
| | 211 | 223 | 147 |
| | 195 | 323 | 205 |
| | 185 | 352 | 159 |
| | | 260 | 134 |

| | | | | | |
|--|------------|--------------------|--------------|---------|------------------|
| Number of families | 1 | | | | |
| Number of comparisons per family | 3 | | | | |
| Alpha | 0.05 | | | | |
| Bonferroni's multiple comparisons test | Mean Diff. | 95.00% CI of diff. | Significant? | Summary | Adjusted P Value |
| CTL vs. OB | -82.9 | -155.2 to -10.6 | Yes | * | 0.0239 |
| CTL vs. STO | 32.7 | -39.6 to 105 | No | ns | 0.6853 |
| OB vs. STO | 115.6 | 47.43 to 183.8 | Yes | ** | 0.0017 |

Figure 2D: Final Fasting Insulin

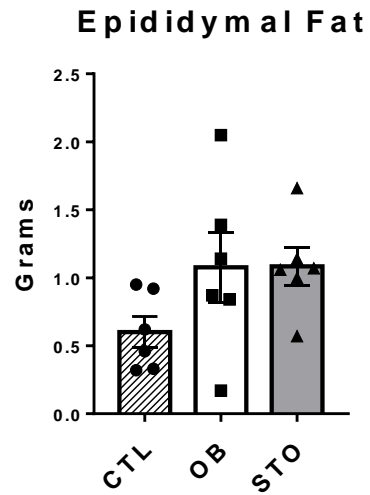
Final Fasting Insulin



| | CTL | OB | STO |
|---|-----------|-----------|-----------|
| Y | Y | Y | Y |
| | 0.3194192 | 4.2304900 | 3.7994560 |
| | 0.2241379 | 2.3838470 | 4.7794920 |
| | 0.1333938 | 2.1388390 | 0.6279492 |
| | 0.1379310 | 1.2858440 | 2.0027220 |
| | 0.1696915 | 1.9800360 | 3.7268600 |
| | 0.1560799 | 1.6578950 | |

| | | | | | |
|----------------------------------|-----------------|--------------|---------|------------------|-----|
| Number of families | 1 | | | | |
| Number of comparisons per family | 3 | | | | |
| Alpha | 0.05 | | | | |
| Dunn's multiple comparisons test | Mean rank diff. | Significant? | Summary | Adjusted P Value | |
| CTL vs. OB | -7.833 | Yes | * | 0.0216 | A-B |
| CTL vs. STO | -9.3 | Yes | ** | 0.0071 | A-C |
| OB vs. STO | -1.467 | No | ns | >0.9999 | B-C |

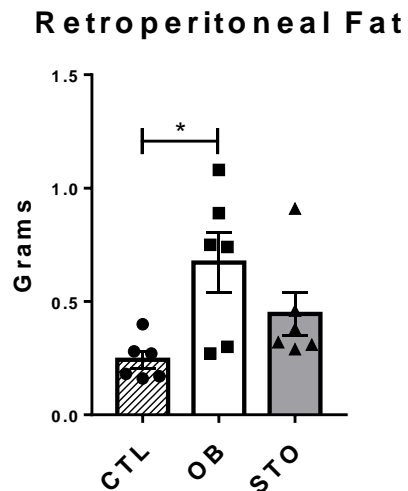
Figure 2E: Epididymal Fat



| | CTL | OB | STO |
|---|------|------|------|
| Y | Y | Y | Y |
| | 0.46 | 0.87 | 1.14 |
| | 0.32 | 0.17 | 1.06 |
| | 0.95 | 1.39 | 0.57 |
| | 0.92 | 2.05 | 1.66 |
| | 0.62 | 1.14 | 1.00 |
| | 0.33 | 0.84 | 1.07 |

| Number of families | 1 | | | | | |
|--|------|------------|--------------------|--------------|---------|------------------|
| Number of comparisons per family | 3 | | | | | |
| Alpha | 0.05 | | | | | |
| Bonferroni's multiple comparisons test | | Mean Diff. | 95.00% CI of diff. | Significant? | Summary | Adjusted P Value |
| CTL vs. OB | | -0.4767 | -1.169 to 0.2158 | No | ns | 0.2504 |
| CTL vs. STO | | -0.4833 | -1.176 to 0.2091 | No | ns | 0.2389 |
| OB vs. STO | | -0.006667 | -0.6991 to 0.6858 | No | ns | >0.9999 |

Figure 2F: Retroperitoneal Fat



| | CTL | OB | STO |
|---|------|------|------|
| Y | Y | Y | Y |
| | 0.18 | 0.27 | 0.31 |
| | 0.16 | 0.75 | 0.91 |
| | 0.40 | 1.08 | 0.29 |
| | 0.27 | 0.89 | 0.38 |
| | 0.28 | 0.74 | 0.46 |
| | 0.17 | 0.30 | 0.32 |

| Number of families | 1 | | | | | |
|--|------|------------|---------------------|--------------|---------|------------------|
| Number of comparisons per family | 3 | | | | | |
| Alpha | 0.05 | | | | | |
| Bonferroni's multiple comparisons test | | Mean Diff. | 95.00% CI of diff. | Significant? | Summary | Adjusted P Value |
| CTL vs. OB | | -0.4283 | -0.7977 to -0.05895 | Yes | * | 0.0209 |
| CTL vs. STO | | -0.2017 | -0.571 to 0.1677 | No | ns | 0.4861 |
| OB vs. STO | | 0.2267 | -0.1427 to 0.596 | No | ns | 0.3573 |