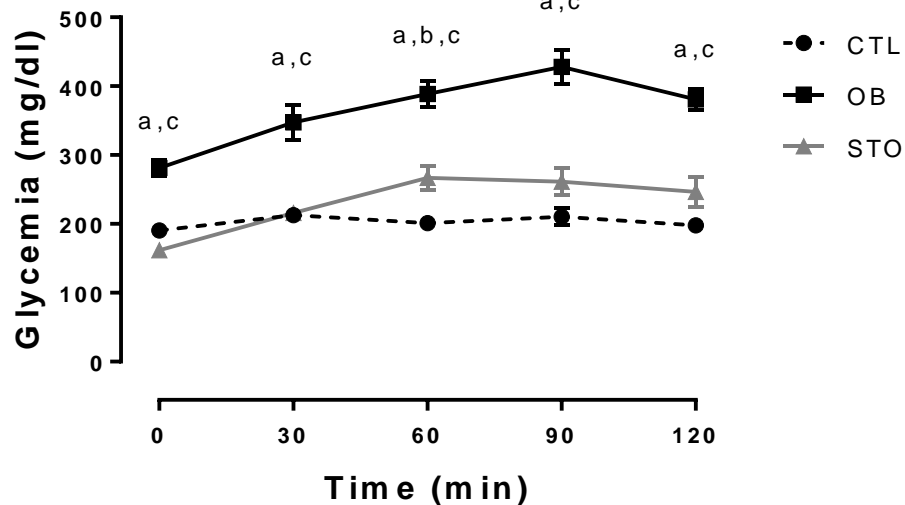


Figure 4A: ipPTT

Table format: XY		X	Group A								Group B								Group C						
		X Title	CTL								OB								STO						
	X	X	A:Y1	A:Y2	A:Y3	A:Y4	A:Y5	A:Y6	A:Y7	A:Y8	B:Y1	B:Y2	B:Y3	B:Y4	B:Y5	B:Y6	B:Y7	B:Y8	C:Y1	C:Y2	C:Y3	C:Y4	C:Y5	C:Y6	C:Y7
1	0	0	191	191	211	195	185	168	192		248	288	292	263	340	278	260		162	188	146	160	161	145	171
2	30	30	205	198	226	191	208	219	242		224	440	335	341	389	368	334		213	246	191	213	194	221	233
3	60	60	172	197	207	176	216	215	226		305	453	367	357	437	425	378		243	348	238	217	276	240	307
4	90	90	204	190	205	167	272	210	224		371	491	343	529	441	388	432		274	351	221	204	274	217	290
5	120	120	198	161	200	193	214	212	209		317	454	359	387	369	399	382		226	348	200	220	288	180	264

Pyruvate Tolerance Test

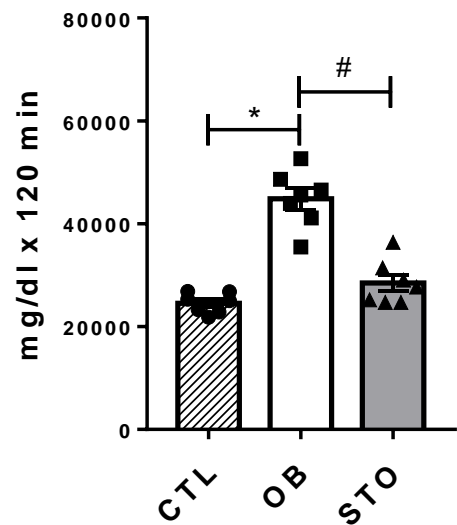


1	Within each row, compare columns (simple effects within	
2		
3	Number of families	5
4	Number of comparisons per family	3
5	Alpha	0.05

	Bonferroni's multiple comparisons test	Mean Diff.	95.00% CI of diff.	Significant?	Summary	Adjusted P Value
7						
8						
9	0					
10	CTL vs. OB	-90.88	-144.3 to -37.37	Yes	***	0.0002
11	CTL vs. STO	28.57	-24.91 to 82.08	No	ns	0.5875
12	OB vs. STO	119.4	65.94 to 172.9	Yes	****	<0.0001
13						
14	30					
15	CTL vs. OB	-134.6	-188.1 to -81.09	Yes	****	<0.0001
16	CTL vs. STO	-3.143	-56.63 to 50.34	No	ns	>0.9999
17	OB vs. STO	131.4	77.94 to 184.9	Yes	****	<0.0001
18						
19	60					
20	CTL vs. OB	-187.6	-241.1 to -134.1	Yes	****	<0.0001
21	CTL vs. STO	-65.71	-119.2 to -12.23	Yes	*	0.0106
22	OB vs. STO	121.9	68.37 to 175.3	Yes	****	<0.0001
23						
24	90					
25	CTL vs. OB	-217.6	-271.1 to -164.1	Yes	****	<0.0001
26	CTL vs. STO	-51.29	-104.8 to 2.199	No	ns	0.0646
27	OB vs. STO	166.3	112.8 to 219.8	Yes	****	<0.0001
28						
29	120					
30	CTL vs. OB	-182.9	-236.3 to -129.4	Yes	****	<0.0001
31	CTL vs. STO	-48.43	-101.9 to 5.056	No	ns	0.0892
32	OB vs. STO	134.4	80.94 to 187.9	Yes	****	<0.0001

# Figure 4B: AUC ipPTT

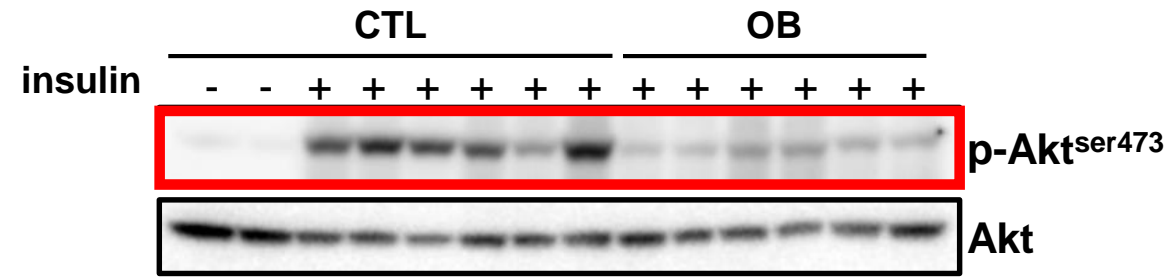
## AUC during ipPTT



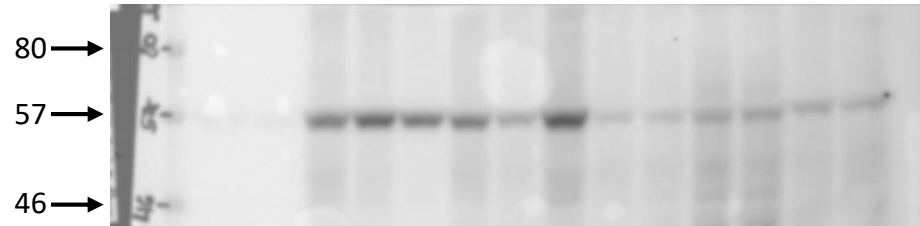
CTL	OB	STO
Y	Y	Y
23265.00	35475.00	27720.00
22830.00	52650.00	36390.00
25305.00	41115.00	24690.00
21840.00	46560.00	24720.00
26865.00	48645.00	29055.00
25020.00	45585.00	25215.00
26775.00	43950.00	31425.00

Number of families	1				
Number of comparisons per family	3				
Alpha	0.05				
Dunn's multiple comparisons test	Mean rank diff.	Significant?	Summary	Adjusted P Value	
CTL vs. OB	-12.29	Yes	***	0.0006	A-B
CTL vs. STO	-4	No	ns	0.6834	A-C
OB vs. STO	8.286	Yes	*	0.0374	B-C

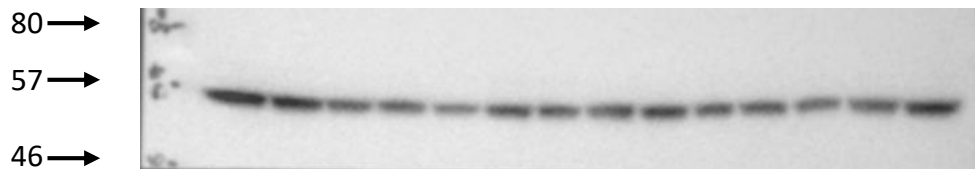
# Figure 4C and D: Phospho-Akt<sup>ser473</sup> - CTL x OB



## Phospho-Akt<sup>ser473</sup>



## Total Akt



## Quantification

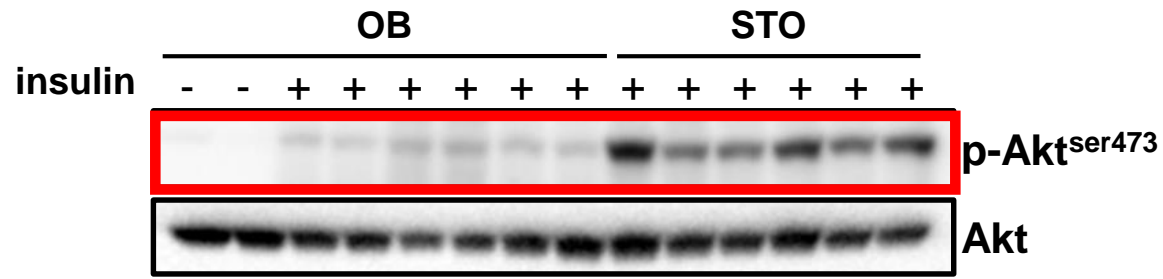
	p-Akt		p-Akt		Akt total	
	membrane 21		ratio	% of control	membrane 16	
	Segment	Pixel Total			Segment	Pixel Total
CTL	1	66156	1,01	86,20	1	65363
	2	86403	1,41	120,27	2	61187
	3	65423	1,49	127,16	3	43818
	4	64262	0,97	82,72	4	66164
	5	28882	0,48	41,10	5	59856
	6	114095	1,67	142,56	6	68162
OBSeD	7	7656	0,10	8,56	7	76165
	8	6724	0,12	9,96	8	57497
	9	32932	0,54	45,83	9	61193
	10	31904	0,64	54,44	10	49913
	11	13503	0,23	19,26	11	59709
	12	13520	0,17	14,19	12	81128

## PRISM analysis

	CTL	OB	Table Analyzed	ct p-Akt / Total Akt
	Y	Y		
	86.20046550	8.56088824	Column B	OB
	120.26576300	9.95989750	vs.	vs.
	127.15992200	45.83410030	Column A	CTL
	82.71891590	54.43820700	Unpaired t test	
	41.09527800	19.26028990	P value	0.0015
	142.55965500	14.19313300	P value summary	**
			Significantly different (P < 0.05)?	Yes
			One- or two-tailed P value?	Two-tailed
			t, df	t=4.341 df=10

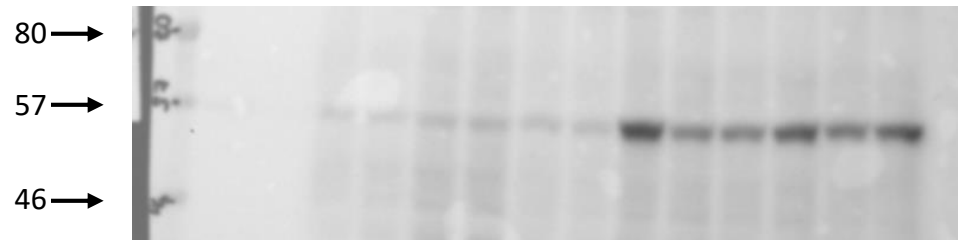
# Figure 4C and E: Phospho-Akt<sup>ser473</sup> - OB x STO

## Quantification

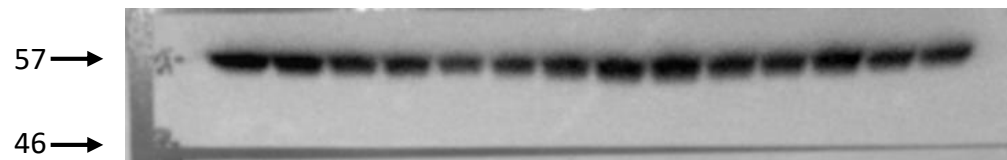


	p-Akt		p-Akt		Akt total	
	23		Relação	% of control	18	
	Segment	Pixel Total			Segment	Pixel Total
OB	1	1745	0,01328158	20,7531169	1	131385
	2	1162	0,00935249	14,6137238	2	124245
	3	11976	0,12645584	197,59346	3	94705
	4	16814	0,16034254	250,543103	4	104863
	5	5400	0,03992695	62,3878193	5	135247
	6	5644	0,03462853	54,1087779	6	162987
OBT	7	107466	0,62704072	979,781935	7	171386
	8	50475	0,35476072	554,331055	8	142279
	9	46506	0,3545989	554,078205	9	131151
	10	79773	0,50194428	784,312602	10	158928
	11	49493	0,38618435	603,432025	11	128159
	12	77155	0,63899126	998,455253	12	120745

## Phospho-Akt<sup>ser473</sup>



## Total Akt



## PRISM analysis

OB	STO
Y	Y
20.7531169	979.781935
14.6137238	554.331055
197.5934600	554.078205
250.5431030	784.312602
62.3878193	603.432025
54.1087779	998.455253

Table Analyzed	\$ p-Akt / Total Akt
Column B	STO
vs.	vs.
Column A	OB
Unpaired t test	
P value	<0.0001
P value summary	****
Significantly different (P < 0.05)?	Yes
One- or two-tailed P value?	Two-tailed
t, df	t=6.896 df=10