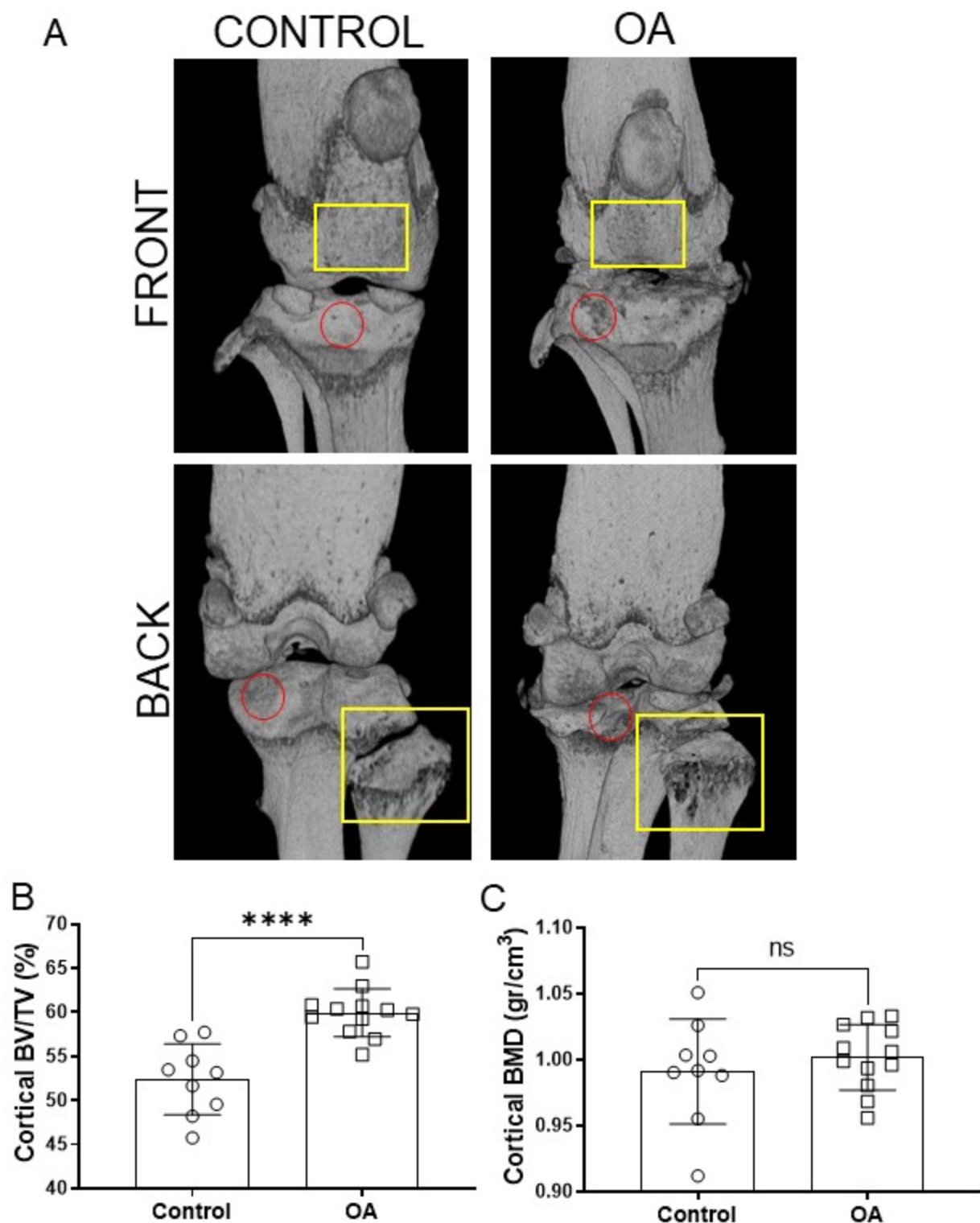


Supplementary figure 5



Supplementary figure 5 – OA mice show increased bone volume of the cortical subchondral area. Mice subjected to DMM (OA group) or control surgery (Control group) were sacrificed after 8 weeks. Knees were collected for μ CT analysis. Representative pictures of 3D knee joints reconstruction from μ CT data (A). The yellow rectangles highlight the areas of bone loss and pittings of the articular surface. The red circles delimits the area where irregular articular bone surface is visible. The graphs contains the plotted data from the μ CT analysis of the cortical bone volume/tissue volume (BV/TV; B) and the cortical bone mineral density (BMD; C). Data are expressed as mean \pm SD and analyzed by t-test. ****, $p < 0.0001$, ns = not statistically significant.